



2024 KIC Product Catalog



KIC

Your only single source for industry-leading wheel end solutions.

STEEL & ALUMINUM WHEELS | DRUMS | HUBS | ROTORS | SLACK ADJUSTERS



KIC Product Catalog

CATALOG INDEX

Hub & Drum Assemblies - Cast Spokes - Hub/Rotors

KIC Hub & Drum Assembly Part Numbering System	2
Icon Legend.....	2
Ductile & Gray Iron Properties.....	3
Assembly Part Number by Application	4
Hub Series Index by SAE Designation.....	9
Assembly Part Number Index.....	10
Assembly Part Number Index by Webb Hub PN.....	16

Brake Drums

Brake Drum Numbering System.....	43
Brake Drum Nomenclature.....	43
Brake Drum Types.....	44
Brake Drum Dimensional Data (By PN).....	45
Brake Drum Dimensional Data (By Brake Shoe Size)	49
Competitive Interchange (Competitor to KIC)	53
Competitive Interchange (KIC to Competitor)	57
Brake Rotors	60

Components

Component Parts	62
-----------------------	----

Every effort has been made to make sure that the information contained in this catalog is correct and up to date. For special application situations, please call Accuride customer service toll free at **800-626-7096**

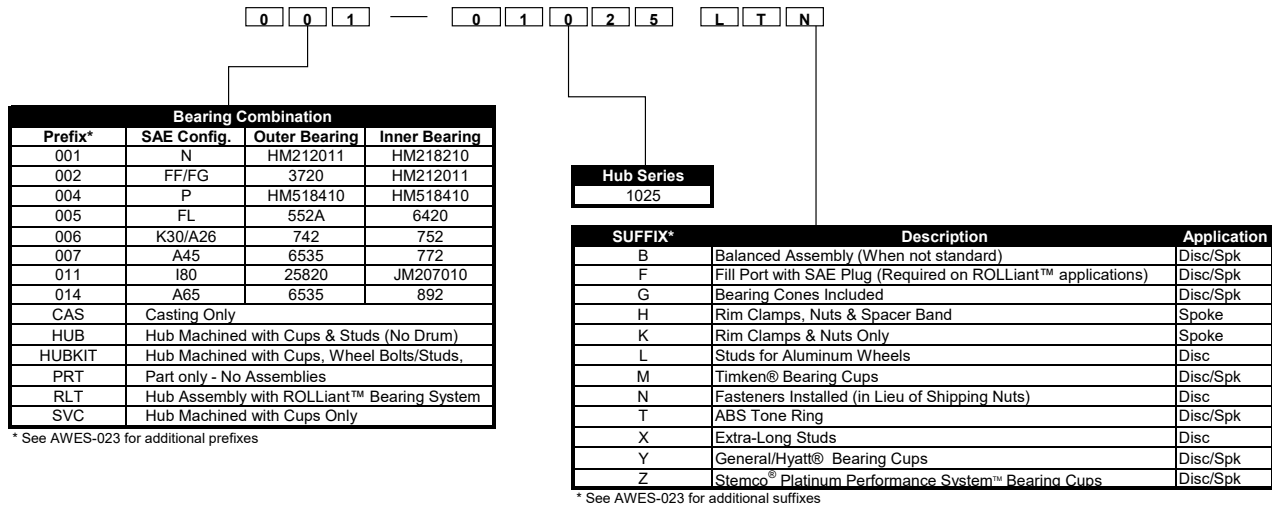
For the most recent product information and catalog updates, please visit our website:

www accuridecorp.com

KIC Hub & Drum Assembly Part Numbering System

Notes: This catalog is divided into sections by axle spindle type. Each hub is listed by the hub casting (which determines bolt circle, bearing spacing etc.) Option codes are listed below. For options or configurations not listed here, please contact Accuride engineering.

KIC Hub & Drum Assembly Nomenclature



Example: 001-01025LTN

“N Spindle Configuration, 1025 Series Hub Casting with 4.79” M22 Studs, Tone Ring, 10 ea. 22mm Flange Nuts Installed, Assembled with Drum”


Example: 001-75000TH


“N Spindle Configuration, 75000 Series Spoke Wheel Casting with ABS Tone Ring, Rim Clamps, Nuts & Spacer Band, Assembled with Drum”


Interchange and competitors’ design information is based on the best information available at the time of publication and is to be used as a guide only. Although every care has been taken in order to ensure the accuracy of these interchanges, Accuride does not assume any liability for errors, changes, omissions or for harm resulting therefrom. It is recommended that all parts be thoroughly checked for proper form, fit and function prior to installation and usage to determine interchangeability.


Icon Legend


General/Hyatt and Stemco, Platinum Performance System, are trademarks their respective companies


 Assembly is available with **Stud Piloted** (Ball Seat) mounting


 Available with Rolliant™ bearing system


 Assembly is available with **Hub Piloted** (Unimount) mounting

 Fill port option available

 **Cast spoke** wheel assembly

 Machined for **ABS** tone ring or features an integrated ABS Ring

 Assembly available with **Balanced** drum

 Hub & rotor assembly

KIC Hubs and cast-spoke wheels meet or exceed the following specifications

ASTM A-536 (Grade 65-45-12)- Standard Specification for Ductile Iron Castings
SAE J434 (Grade 64-45-12) - Automotive Ductile (Nodular) Iron Castings

KIC standard brake drums meet or exceed the following specifications:

ASTM A-159 (Grade G3500b) - Standard Specification for Automotive Gray Cast Iron
SAE J431 (G11H20b) - Automotive Gray Iron Castings

KIC 6xxxx brake drums meet or exceed the following specifications:

ASTM A-159 (Grade G3000b) - Standard Specification for Automotive Gray Cast Iron
SAE J431 (G11H18b) - Automotive Gray Iron Castings

KIC material property testing is governed by:

ASTM A-48 - Standard Tensile Specifications for Gray Iron Castings
ASTM E-8- Methods of Tension Testing of Metallic Materials
ASTM E-10 - Hardness Testing Procedure
ASTM A-247- Microstructure Evaluation Procedure

Assembly Part Number by Application



Trailer - Disc Wheel

Assembly PN	Assembly Description Hub Casting Description	SAE Code	Inner Cup Inner Cone	Outer Cup Outer Cone	Catalog Page
001-00103	Hub Pilot, M22 x 3.97 Stud, 16.5 x 7" Drum Ductile Iron 10 stud hub w/ 335mm Dia. Bolt Circle. Uses Outboard Drum - Serrated stud	N	HM218210 HM218248	HM212011 HM212049	17
001-00103L	Hub Pilot, M22 x 4.82 Stud, 16.5 x 7" Drum Ductile Iron 10 stud hub w/ 335mm Dia. Bolt Circle. Uses Outboard Drum - Serrated stud	N	HM218210 HM218248	HM212011 HM212049	17
001-00104	Hub Pilot, M22 x 3.73 Stud, 16.5 x 7" Drum Ductile Iron 10 stud hub w/ 335mm Dia. Bolt Circle. Uses Outboard Drum - Serrated stud	N	HM218210 HM218248	HM212011 HM212049	17
001-00133	Hub Pilot, M22 x 3.97 Stud, 12.25 x 7.5" Drum Ductile Iron 8 stud hub w/ 275mm Dia. Bolt Circle. Uses Outboard Drum - Serrated stud	N	HM218210 HM218248	HM212011 HM212049	18
001-00133L	Hub Pilot, M22 x 4.82 Stud, 12.25 x 7.5" Drum Ductile Iron 8 stud hub w/ 275mm Dia. Bolt Circle. Uses Outboard Drum - Serrated stud	N	HM218210 HM218248	HM212011 HM212049	18
001-00225	Hub Pilot, M22 x 3.97 Stud, 16.5 x 7" XHD Drum Bal Ductile Iron 10 stud hub (2Gen) w/ 11.25" Dia. Bolt Circle. Uses Outboard Drum - Serrated stud	N	HM218210 HM218248	HM212011 HM212049	23
001-00225L	Hub Pilot, M22 x 4.82 Stud, 16.5 x 7" XHD Drum Bal Ductile Iron 10 stud hub (2Gen) w/ 11.25" Dia. Bolt Circle. Uses Outboard Drum - Serrated stud	N	HM218210 HM218248	HM212011 HM212049	23
001-01000	Hub Pilot, M22 x 3.97 Stud, 16.5 x 5" Drum Bal Ductile Iron 10 stud hub (2Gen) w/ 11.25" Dia. Bolt Circle. Uses Outboard Drum - Serrated stud	N	HM218210 HM218248	HM212011 HM212049	23
001-01000L	Hub Pilot, M22 x 4.82 Stud, 16.5 x 5" Drum Bal Ductile Iron 10 stud hub (2Gen) w/ 11.25" Dia. Bolt Circle. Uses Outboard Drum - Serrated stud	N	HM218210 HM218248	HM212011 HM212049	23
001-01001	Hub Pilot, M22 x 3.97 Stud, 16.5 x 8-5/8" Drum Bal Ductile Iron 10 stud hub (2Gen) w/ 11.25" Dia. Bolt Circle. Uses Outboard Drum - Serrated stud	N	HM218210 HM218248	HM212011 HM212049	23
001-01001L	Hub Pilot, M22 x 4.82 Stud, 16.5 x 8-5/8" Drum Bal Ductile Iron 10 stud hub (2Gen) w/ 11.25" Dia. Bolt Circle. Uses Outboard Drum - Serrated stud	N	HM218210 HM218248	HM212011 HM212049	23
001-01025	Hub Pilot, M22 x 3.97 Stud, 16.5 x 7" Drum Ductile Iron 10 stud hub (2Gen) w/ 11.25" Dia. Bolt Circle. Uses Outboard Drum - Serrated stud	N	HM218210 HM218248	HM212011 HM212049	23
001-01025L	Hub Pilot, M22 x 4.82 Stud, 16.5 x 7" Drum Ductile Iron 10 stud hub (2Gen) w/ 11.25" Dia. Bolt Circle. Uses Outboard Drum - Serrated stud	N	HM218210 HM218248	HM212011 HM212049	23
001-01026	Stud Pilot, 3/4-16 RH Stud, 16.5 x 7" Drum Ductile Iron 10 stud hub (2Gen) w/ 11.25" Dia. Bolt Circle. Uses Outboard Drum - Serrated stud	N	HM218210 HM218248	HM212011 HM212049	23
001-01026L	Stud Pilot, 3/4-16 RH Long Stud, 16.5 x 7" Drum Ductile Iron 10 stud hub (2Gen) w/ 11.25" Dia. Bolt Circle. Uses Outboard Drum - Serrated stud	N	HM218210 HM218248	HM212011 HM212049	23
001-01027	Stud Pilot, 3/4-16 LH Stud, 16.5 x 7" Drum Ductile Iron 10 stud hub (2Gen) w/ 11.25" Dia. Bolt Circle. Uses Outboard Drum - Serrated stud	N	HM218210 HM218248	HM212011 HM212049	23
001-01027L	Stud Pilot, 3/4-16 LH Long Stud, 16.5 x 7" Drum Ductile Iron 10 stud hub (2Gen) w/ 11.25" Dia. Bolt Circle. Uses Outboard Drum - Serrated stud	N	HM218210 HM218248	HM212011 HM212049	23
001-01070	Hub Pilot, M22 x 3.97 Stud, 15.0 x 8-5/8" Drum Bal Ductile Iron 10 stud hub (2Gen) w/ 11.25" Dia. Bolt Circle. Uses Outboard Drum - Serrated stud	N	HM218210 HM218248	HM212011 HM212049	23
001-01070L	Hub Pilot, M22 x 3.97 Stud, 15.0 x 8-5/8" Drum Bal Ductile Iron 10 stud hub (2Gen) w/ 11.25" Dia. Bolt Circle. Uses Outboard Drum - Serrated stud	N	HM218210 HM218248	HM212011 HM212049	23



Assembly Part Number by Application

Trailer - Disc Wheel

Assembly PN	Assembly Description Hub Casting Description	SAE Code	Inner Cup Inner Cone	Outer Cup Outer Cone	Catalog Page
001-10061	Stud Pilot, 3/4-16 RH Stud, 16.5 x 7" Drum Ductile Iron 10 stud hub w/ 11.25" Dia. Bolt Circle. Uses Inboard Drum - Shoulder Stud	N	HM218210 HM218248	HM212011 HM212049	21
001-10062	Stud Pilot, 3/4-16 LH Stud, 16.5 x 7" Drum Ductile Iron 10 stud hub w/ 11.25" Dia. Bolt Circle. Uses Inboard Drum - Shoulder Stud	N	HM218210 HM218248	HM212011 HM212049	21
001-10511	Stud Pilot, 3/4-16 RH 12.25" x 7.5" Drum Ductile Iron 10 stud hub w/ 8.75" Dia. Bolt Circle. Uses Inboard Drum - Shoulder Stud	N	HM218210 HM218248	HM212011 HM212049	26
001-10512	Stud Pilot, 3/4-16 LH 12.25" x 7.5" Drum Ductile Iron 10 stud hub w/ 8.75" Dia. Bolt Circle. Uses Inboard Drum - Shoulder Stud	N	HM218210 HM218248	HM212011 HM212049	26
001-1HTR07000F	Hub/Rotor ASSY, TN ADB Hub w/fill port-11.25" BC, M22 x 3.97" PAN22 Rotor Ductile Iron 10 stud ADB hub w/ 11.25" Dia. Bolt Circle. Uses PAN19/22 Rotor- Serrated stud	N	HM218210 HM218248	HM212011 HM212049	19
001-1HTR07000FL	Hub/Rotor ASSY, TN ADB Hub w/fill port-11/25" BC, M22 x 4.82" PAN22 Rotor Ductile Iron 10 stud ADB hub w/ 11.25" Dia. Bolt Circle. Uses PAN19/22 Rotor- Serrated stud	N	HM218210 HM218248	HM212011 HM212049	19
001-21025	Hub Pilot, M22 x 3.97 Stud, 16.5 x 7" Drum Bal Ductile Iron 10 stud hub (2Gen) w/ 11.25" Dia. Bolt Circle. Uses Outboard Drum - Serrated stud	N	HM218210 HM218248	HM212011 HM212049	23
001-21025L	Hub Pilot, M22 x 4.82 Stud, 16.5 x 7" Drum Bal Ductile Iron 10 stud hub (2Gen) w/ 11.25" Dia. Bolt Circle. Uses Outboard Drum - Serrated stud	N	HM218210 HM218248	HM212011 HM212049	23
001-81025	Hub Pilot, M22 x 3.97 Stud, 16.5 x 7" Trident Drum Ductile Iron 10 stud hub (2Gen) w/ 11.25" Dia. Bolt Circle. Uses Outboard Drum - Serrated stud	N	HM218210 HM218248	HM212011 HM212049	23
001-81025L	Hub Pilot, M22 x 4.82" Stud, 16.5 x 7" Trident Drum Ductile Iron 10 stud hub (2Gen) w/ 11.25" Dia. Bolt Circle. Uses Outboard Drum - Serrated stud	N	HM218210 HM218248	HM212011 HM212049	23
004-00130	Hub Pilot, M22 x 3.97 Stud, 16.5 x 7" Drum Ductile Iron 10 stud hub w/ 11.25" Dia. Bolt Circle. Uses Outboard drum - Serrated stud	P	HM518410 HM518445	HM518410 HM518445	27
004-00130L	Hub Pilot, M22 x 4.82 Stud, 16.5 x 7" Drum Ductile Iron 10 stud hub w/ 11.25" Dia. Bolt Circle. Uses Outboard drum - Serrated stud	P	HM518410 HM518445	HM518410 HM518445	27
004-00131	Stud Pilot, 3/4-16 RH Stud, 16.5 x 7" Drum Ductile Iron 10 stud hub w/ 11.25" Dia. Bolt Circle. Uses Outboard drum - Serrated stud	P	HM518410 HM518445	HM518410 HM518445	27
004-00132	Stud Pilot, 3/4-16 LH Stud, 16.5 x 7" Drum Ductile Iron 10 stud hub w/ 11.25" Dia. Bolt Circle. Uses Outboard drum - Serrated stud	P	HM518410 HM518445	HM518410 HM518445	27
004-01043	Hub Pilot, M22 x 3.97 Stud, 16.5 x 7" Drum Ductile Iron 10 stud hub w/ 11.25" Dia. Bolt Circle. Uses Outboard drum - Serrated stud	P	HM518410 HM518445	HM518410 HM518445	25
004-01043L	Hub Pilot, M22 x 4.82 Stud, 16.5 x 7" Drum Ductile Iron 10 stud hub w/ 11.25" Dia. Bolt Circle. Uses Outboard drum - Serrated stud	P	HM518410 HM518445	HM518410 HM518445	25
004-01048	Hub Pilot, M22 x 3.97 Stud, 16.5 x 8 5/8" Drum Bal Ductile Iron 10 stud hub w/ 11.25" Dia. Bolt Circle. Uses Outboard drum - Serrated stud	P	HM518410 HM518445	HM518410 HM518445	25
004-01048L	Hub Pilot, M22 x 4.82 Stud, 16.5 x 8 5/8" Drum Bal Ductile Iron 10 stud hub w/ 11.25" Dia. Bolt Circle. Uses Outboard drum - Serrated stud	P	HM518410 HM518445	HM518410 HM518445	25

Assembly Part Number by Application



Trailer - Disc Wheel

Assembly PN	Assembly Description Hub Casting Description	SAE Code	Inner Cup Inner Cone	Outer Cup Outer Cone	Catalog Page
004-01050	Stud Pilot, 3/4-16 RH Stud, 16.5 x 7" Drum Ductile Iron 10 stud hub w/ 11.25" Dia. Bolt Circle. Uses Outboard drum - Serrated stud	P	HM518410 HM518445	HM518410 HM518445	25
004-01051	Stud Pilot, 3/4-16 LH Stud, 16.5 x 7" Drum Ductile Iron 10 stud hub w/ 11.25" Dia. Bolt Circle. Uses Outboard drum - Serrated stud	P	HM518410 HM518445	HM518410 HM518445	25
004-1HTR47001F	Hub/Rotor ASSY, TP ADB Hub w/fill port-11.25" BC, M22x3.97" PAN22 Rotor Ductile Iron 10 stud ADB hub w/ 11.25" Dia. Bolt Circle. Uses PAN22 Rotor - Serrated stud	P	HM518410 HM518445	HM518410 HM518445	48
004-1HTR47001FL	Hub/Rotor ASSY, TP ADB Hub w/fill port-11/25" BC, M22x4.82" PAN22 Rotor Ductile Iron 10 stud ADB hub w/ 11.25" Dia. Bolt Circle. Uses PAN22 Rotor - Serrated stud	P	HM518410 HM518445	HM518410 HM518445	48
004-21043	Hub Pilot, M22 x 3.97 Stud, 16.5 x 7" Drum Bal Ductile Iron 10 stud hub w/ 11.25" Dia. Bolt Circle. Uses Outboard drum - Serrated stud	P	HM518410 HM518445	HM518410 HM518445	25
004-21043L	Hub Pilot, M22 x 4.82 Stud, 16.5 x 7" Drum Bal Ductile Iron 10 stud hub w/ 11.25" Dia. Bolt Circle. Uses Outboard drum - Serrated stud	P	HM518410 HM518445	HM518410 HM518445	25
004-40110	Hub Pilot, M22 x 3.97 Stud, 16.5 x 7" Drum Ductile Iron 10 stud hub w/ 335mm Dia. Bolt Circle. Uses Outboard Drum - Serrated stud	P	HM518410 HM518445	HM518410 HM518445	35
004-40110L	Hub Pilot, M22 x 4.82 Stud, 16.5 x 7" Drum Ductile Iron 10 stud hub w/ 335mm Dia. Bolt Circle. Uses Outboard Drum - Serrated stud	P	HM518410 HM518445	HM518410 HM518445	35
004-40310	Hub Pilot, M22 x 3.97 Stud, 16.5 x 7" Drum Ductile Iron 10 stud hub w/ 335mm Dia. Bolt Circle. Uses Outboard Drum - Serrated stud	P	HM518410 HM518445	HM518410 HM518445	36
004-40310L	Hub Pilot, M22 x 4.82 Stud, 16.5 x 7" Drum Ductile Iron 10 stud hub w/ 335mm Dia. Bolt Circle. Uses Outboard Drum - Serrated stud	P	HM518410 HM518445	HM518410 HM518445	36
004-41045	Hub Pilot, M22 x 3.97 Stud, 12.25 x 7.5" Drum Ductile Iron 8-stud hub w/ 275mm Dia. Bolt Circle. Uses Outboard drum - Serrated stud	P	HM518410 HM518445	HM518410 HM518445	37
004-41045L	Hub Pilot, M22 x 4.82 Stud, 12.25 x 7.5" Drum Ductile Iron 8-stud hub w/ 275mm Dia. Bolt Circle. Uses Outboard drum - Serrated stud	P	HM518410 HM518445	HM518410 HM518445	37
004-81043	Hub Pilot, M22 x 3.97 Stud, 16.5 x 7" Trident Drum Ductile Iron 10 stud hub w/ 11.25" Dia. Bolt Circle. Uses Outboard drum - Serrated stud	P	HM518410 HM518445	HM518410 HM518445	25
004-81043L	Hub Pilot, M22 x 3.82 Stud, 16.5 x 7" Trident Drum Ductile Iron 10 stud hub w/ 11.25" Dia. Bolt Circle. Uses Outboard drum - Serrated stud	P	HM518410 HM518445	HM518410 HM518445	25
006-02133	Hub Pilot, M22 x 3.97 Stud, 16.5 x 8-5/8" Drum Ductile Iron 10 stud hub w/ 335mm Dia. Bolt Circle. Uses Outboard Drum - Serrated stud	K30	752 759	742 740	30
006-02133L	Hub Pilot, M22 x 4.82 Stud, 16.5 x 8-5/8" Drum Ductile Iron 10 stud hub w/ 335mm Dia. Bolt Circle. Uses Outboard Drum - Serrated stud	K30	752 759	742 740	30
006-02134	Hub Pilot, M22 x 3.97 Stud, 16.5 x 7" Drum Bal Ductile Iron 10 stud hub w/ 11.25" Dia. Bolt Circle. Uses Outboard Drum - Serrated stud	K30	752 759	742 740	31
006-02134L	Hub Pilot, M22 x 4.82" Stud, 16.5 x 7" Drum Bal Ductile Iron 10 stud hub w/ 11.25" Dia. Bolt Circle. Uses Outboard Drum - Serrated stud	K30	752 759	742 740	31



Assembly Part Number by Application

Trailer - Disc Wheel

Assembly PN	Assembly Description Hub Casting Description	SAE Code	Inner Cup Inner Cone	Outer Cup Outer Cone	Catalog Page
006-02135	Hub Pilot, M22 x 3.97 Stud, 16.5 x 7" Drum Ductile Iron 10 stud hub w/ 335mm Dia. Bolt Circle. Uses Outboard Drum - Serrated stud	K30	752 759	742 740	30
006-02135L	Hub Pilot, M22 x 4.82 Stud, 16.5 x 7" Drum Ductile Iron 10 stud hub w/ 335mm Dia. Bolt Circle. Uses Outboard Drum - Serrated stud	K30	752 759	742 740	30
006-02136	Stud Pilot, 3/4-16 RH Stud, 16.5 x 7" Drum Bal Ductile Iron 10 stud hub w/ 11.25" Dia. Bolt Circle. Uses Outboard Drum - Serrated stud	K30	752 759	742 740	31
006-02137	Stud Pilot, 3/4-16 LH Stud, 16.5 x 7" Drum Bal Ductile Iron 10 stud hub w/ 11.25" Dia. Bolt Circle. Uses Outboard Drum - Serrated stud	K30	752 759	742 740	31
006-02138	Hub Pilot, M22 x 3.97 Stud, 16.5 x 8-5/8" Drum Bal Ductile Iron 10 stud hub w/ 11.25" Dia. Bolt Circle. Uses Outboard Drum - Serrated stud	K30	752 759	742 740	31
006-02138L	Hub Pilot, M22 x 4.82" Stud, 16.5 x 8-5/8" Drum Bal Ductile Iron 10 stud hub w/ 11.25" Dia. Bolt Circle. Uses Outboard Drum - Serrated stud	K30	752 759	742 740	31
007-09518	Hub Pilot M24 x 5.47 Stud, 18 x 7" Drum Ductile Iron 10 stud hub w/ 335mm Dia. Bolt Circle. Uses Outboard Drum - Serrated stud	W (A45)	772 787	6535 6580	42
014-09442	Hub Pilot M24 x 5.47 Stud, 18 x 7" Drum Ductile Iron 10 stud hub w/ 335mm Dia. Bolt Circle. Uses Outboard Drum - Serrated stud	A65	892 896	6535 6580	41
R17-07017FL	Hub/Rotor ASSY, TN ADB Hub w/fill port-10.83" BC , M22x4.82" PAN17 Rotor Ductile Iron 10 stud ADB hub w/ 275mm Dia. Bolt Circle. Uses PAN17 Rotor - Serrated stud	N	HM218210 HM218248	HM212011 HM212049	20
R19-07000F	Hub/Rotor ASSY, TN ADB Hub w/fill port-11.25" BC , M22x3.97" PAN19 Rotor Ductile Iron 10 stud ADB hub w/ 11.25" Dia. Bolt Circle. Uses PAN19/22 Rotor- Serrated stud	N	HM218210 HM218248	HM212011 HM212049	19
R19-07000FL	Hub/Rotor ASSY, TN ADB Hub w/fill port-11/25" BC, M22x4.82" PAN19 Rotor Ductile Iron 10 stud ADB hub w/ 11.25" Dia. Bolt Circle. Uses PAN19/22 Rotor- Serrated stud	N	HM218210 HM218248	HM212011 HM212049	19
R19-47001F	Hub/Rotor ASSY, TP ADB Hub w/fill port-11.25" BC , M22x3.97" PAN19 Rotor Ductile Iron 10 stud ADB hub w/ 11.25" Dia. Bolt Circle. Uses PAN22 Rotor - Serrated stud	P	HM518410 HM518445	HM518410 HM518445	48
R19-47001FL	Hub/Rotor ASSY, TP ADB Hub w/fill port-11/25" BC, M22x4.82" PAN19 Rotor Ductile Iron 10 stud ADB hub w/ 11.25" Dia. Bolt Circle. Uses PAN22 Rotor - Serrated stud	P	HM518410 HM518445	HM518410 HM518445	48

Trailer - Cast Spoke Wheel

Assembly PN	Assembly Description Hub Casting Description	SAE Code	Inner Cup Inner Cone	Outer Cup Outer Cone	Catalog Page
001-75000	5-Spoke x 20" 16.5 x 7" Brake Drum Ductile Iron 5-spoke 20"	N	HM218210 HM218248	HM212011 HM212049	40

Assembly Part Number by Application



Truck/Trailer - Steer Axle

Assembly PN	Assembly Description Hub Casting Description	SAE Code	Inner Cup Inner Cone	Outer Cup Outer Cone	Catalog Page
001-02540	Hub Pilot, M22 x 3.73 Stud, 16.5 x 6" Drum Bal Ductile Iron 10 stud hub w/ 11.25" Dia. Bolt Circle. Uses Outboard Drum - Serrated stud	N	HM218210 HM218248	HM212011 HM212049	33
001-02540L	Hub Pilot, M22 x 3.97 Stud, 16.5 x 6" Drum Bal Ductile Iron 10 stud hub w/ 11.25" Dia. Bolt Circle. Uses Outboard Drum - Serrated stud	N	HM218210 HM218248	HM212011 HM212049	33
001-02540X	Hub Pilot, M22 x 4.25 Stud, 16.5 x 6" Drum Bal Ductile Iron 10 stud hub w/ 11.25" Dia. Bolt Circle. Uses Outboard Drum - Serrated stud	N	HM218210 HM218248	HM212011 HM212049	33
001-02545	Hub Pilot, M22 x 3.73 Stud, 16.5 x 5" Drum Bal Ductile Iron 10 stud hub w/ 11.25" Dia. Bolt Circle. Uses Outboard Drum - Serrated stud	N	HM218210 HM218248	HM212011 HM212049	33
001-02545L	Hub Pilot, M22 x 3.97 Stud, 16.5 x 5" Drum Bal Ductile Iron 10 stud hub w/ 11.25" Dia. Bolt Circle. Uses Outboard Drum - Serrated stud	N	HM218210 HM218248	HM212011 HM212049	33
001-02546	Hub Pilot, M22 x 3.70 Stud, 15 x 6" Drum Bal Ductile Iron 10 stud hub w/ 11.25" Dia. Bolt Circle. Uses Outboard Drum - Serrated stud	N	HM218210 HM218248	HM212011 HM212049	33
001-02546L	Hub Pilot, M22 x 3.97 Stud, 15 x 6" Drum Bal Ductile Iron 10 stud hub w/ 11.25" Dia. Bolt Circle. Uses Outboard Drum - Serrated stud	N	HM218210 HM218248	HM212011 HM212049	33
001-02546X	Hub Pilot, M22 x 4.25 Stud, 15 x 6" Drum Bal Ductile Iron 10 stud hub w/ 11.25" Dia. Bolt Circle. Uses Outboard Drum - Serrated stud	N	HM218210 HM218248	HM212011 HM212049	33
001-02547	Hub Pilot, M22 x 3.70 Stud, 16.5 x 7" Drum Bal Ductile Iron 10 stud hub w/ 11.25" Dia. Bolt Circle. Uses Outboard Drum - Serrated stud	N	HM218210 HM218248	HM212011 HM212049	33
001-02547L	Hub Pilot, M22 x 3.97 Stud, 16.5 x 7" Drum Bal Ductile Iron 10 stud hub w/ 11.25" Dia. Bolt Circle. Uses Outboard Drum - Serrated stud	N	HM218210 HM218248	HM212011 HM212049	33
002-00137	Hub Pilot, M22 x 3.70 Stud, 15 x 4" Drum Bal Ductile Iron 10 stud hub w/ 11.25" Dia. Bolt Circle. Uses Outboard Drum - Serrated stud	FF/FG	HM212011 HM212049	3720 3782	28
002-00137L	Hub Pilot, M22 x 3.97 Stud, 15 x 4" Drum Bal Ductile Iron 10 stud hub w/ 11.25" Dia. Bolt Circle. Uses Outboard Drum - Serrated stud	FF/FG	HM212011 HM212049	3720 3782	28
002-00138	Stud Pilot, 3/4-16 RH Stud, 15 x 4" Drum Bal Ductile Iron 10 stud hub w/ 11.25" Dia. Bolt Circle. Uses Outboard Drum - Serrated stud	FF/FG	HM212011 HM212049	3720 3782	28
002-00139	Stud Pilot, 3/4-16 LH Stud, 15 x 4" Drum Bal Ductile Iron 10 stud hub w/ 11.25" Dia. Bolt Circle. Uses Outboard Drum - Serrated stud	FF/FG	HM212011 HM212049	3720 3782	28
002-00142	Hub Pilot, M22 x 3.70 Stud, 16.5 x 5" Drum Bal Ductile Iron 10 stud hub w/ 11.25" Dia. Bolt Circle. Uses Outboard Drum - Serrated stud	FF/FG	HM212011 HM212049	3720 3782	28
002-00142L	Hub Pilot, M22 x 3.97 Stud, 16.5 x 5" Drum Bal Ductile Iron 10 stud hub w/ 11.25" Dia. Bolt Circle. Uses Outboard Drum - Serrated stud	FF/FG	HM212011 HM212049	3720 3782	28
002-00144	Hub Pilot, M22 x 3.70 Stud, 15 x 5" Drum Bal Ductile Iron 10 stud hub w/ 11.25" Dia. Bolt Circle. Uses Outboard Drum - Serrated stud	FF/FG	HM212011 HM212049	3720 3782	28
002-00144L	Hub Pilot, M22 x 3.97 Stud, 15 x 5" Drum Bal Ductile Iron 10 stud hub w/ 11.25" Dia. Bolt Circle. Uses Outboard Drum - Serrated stud	FF/FG	HM212011 HM212049	3720 3782	28
002-00200	Hub Pilot, M22 x 3.73 Stud, 15 x 4" Drum Bal Ductile Iron 10 stud hub w/ 11.25" Dia. Bolt Circle. Uses Outboard Drum - Serrated stud	FF/FG	HM212011 HM212049	3720 3782	29



Truck/Trailer - Steer Axle

Assembly PN	Assembly Description Hub Casting Description	SAE Code	Inner Cup Inner Cone	Outer Cup Outer Cone	Catalog Page
002-00200L	Hub Pilot, M22 x 3.97 Stud, 15 x 4" Drum Bal Ductile Iron 10 stud hub w/ 11.25" Dia. Bolt Circle. Uses Outboard Drum - Serrated stud	FF/FG	HM212011 HM212049	3720 3782	29
002-00237	Hub Pilot, M22 x 3.73 Stud, 15 x 4" Drum Bal Ductile Iron 10 stud hub w/ 11.25" Dia. Bolt Circle. Uses Outboard Drum - Serrated stud	FF/FG	HM212011 HM212049	3720 3782	32
002-00237L	Hub Pilot, M22 x 3.97 Stud, 15 x 4" Drum Bal Ductile Iron 10 stud hub w/ 11.25" Dia. Bolt Circle. Uses Outboard Drum - Serrated stud	FF/FG	HM212011 HM212049	3720 3782	32
005-51005L	Hub Pilot, M22 x 4.25 Stud, 16.5 x 6" Drum Bal Ductile Iron 10 stud hub w/ 11.25" Dia. Bolt Circle. Uses Outboard Drum - Serrated stud	FL	6420 6461A	552A 555S	39
005-51005X	Hub Pilot, M22 x 4.82 Stud, 16.5 x 6" Drum Bal Ductile Iron 10 stud hub w/ 11.25" Dia. Bolt Circle. Uses Outboard Drum - Serrated stud	FL	6420 6461A	552A 555S	39
011-04000L	Hub Pilot M18 x 3.15 Stud, 12.80 x 4" Drum Bal Ductile Iron 6 stud hub w/ 8.07" Dia Bolt Circle. Uses Outboard Drum - Clipped Head Stud	I80 (FC)	JM207010 JM207049A	25820 25877	34

Hub Series listed by SAE Designation

Prefix	Hub Series Description	SAE Code	Inner Cup Inner Cone	Outer Cup Outer Cone	Catalog Page
001	00103 Series Ductile Iron 10 stud hub w/ 335mm Dia. Bolt Circle. Uses Outboard Drum - Serrated stud	N	HM218210 HM218248	HM212011 HM212049	17
001	07000 Series Ductile Iron 10 stud ADB hub w/ 11.25" Dia. Bolt Circle. Uses PAN19/22 Rotor- Serrated stud	N	HM218210 HM218248	HM212011 HM212049	19
001	07017 Series Ductile Iron 10 stud ADB hub w/ 275mm Dia. Bolt Circle. Uses PAN17 Rotor - Serrated stud	N	HM218210 HM218248	HM212011 HM212049	20
001	1006 Series Ductile Iron 10 stud hub w/ 11.25" Dia. Bolt Circle. Uses Inboard Drum - Shoulder Stud	N	HM218210 HM218248	HM212011 HM212049	21
001	1025 Series Ductile Iron 10 stud hub (2Gen) w/ 11.25" Dia. Bolt Circle. Uses Outboard Drum - Serrated stud	N	HM218210 HM218248	HM212011 HM212049	23
001	1051 Series Ductile Iron 10 stud hub w/ 8.75" Dia. Bolt Circle. Uses Inboard Drum - Shoulder Stud	N	HM218210 HM218248	HM212011 HM212049	26
001	133 Series Ductile Iron 8 stud hub w/ 275mm Dia. Bolt Circle. Uses Outboard Drum - Serrated stud	N	HM218210 HM218248	HM212011 HM212049	18
001	2540 Series Ductile Iron 10 stud hub w/ 11.25" Dia. Bolt Circle. Uses Outboard Drum - Serrated stud	N	HM218210 HM218248	HM212011 HM212049	33
001	75000 Series Ductile Iron 5-spoke 20"	N	HM218210 HM218248	HM212011 HM212049	40
002	137 Series Ductile Iron 10 stud hub w/ 11.25" Dia. Bolt Circle. Uses Outboard Drum - Serrated stud	FF/FG	HM212011 HM212049	3720 3782	28
002	200 Series Ductile Iron 10 stud hub w/ 11.25" Dia. Bolt Circle. Uses Outboard Drum - Serrated stud	FF/FG	HM212011 HM212049	3720 3782	29

Hub Series Index by SAE Designation



Prefix	Hub Series Description	SAE Code	Inner Cup Inner Cone	Outer Cup Outer Cone	Catalog Page
002	237 Series Ductile Iron 10 stud hub w/ 11.25" Dia. Bolt Circle. Uses Outboard Drum - Serrated stud	FF/FG	HM212011 HM212049	3720 3782	32
004	1043 Series Ductile Iron 10 stud hub w/ 11.25" Dia. Bolt Circle. Uses Outboard drum - Serrated stud	P	HM518410 HM518445	HM518410 HM518445	25
004	130 Series Ductile Iron 10 stud hub w/ 11.25" Dia. Bolt Circle. Uses Outboard drum - Serrated stud	P	HM518410 HM518445	HM518410 HM518445	27
004	40110 Series Ductile Iron 10 stud hub w/ 335mm Dia. Bolt Circle. Uses Outboard Drum - Serrated stud	P	HM518410 HM518445	HM518410 HM518445	35
004	40310 Series Ductile Iron 10 stud hub w/ 335mm Dia. Bolt Circle. Uses Outboard Drum - Serrated stud	P	HM518410 HM518445	HM518410 HM518445	36
004	41045 Series Ductile Iron 8-stud hub w/ 275mm Dia. Bolt Circle. Uses Outboard drum - Serrated stud	P	HM518410 HM518445	HM518410 HM518445	37
004	47001 Series Ductile Iron 10 stud ADB hub w/ 11.25" Dia. Bolt Circle. Uses PAN22 Rotor - Serrated stud	P	HM518410 HM518445	HM518410 HM518445	48
005	51005 Series Ductile Iron 10 stud hub w/ 11.25" Dia. Bolt Circle. Uses Outboard Drum - Serrated stud	FL	6420 6461A	552A 555S	39
006	2133 Series Ductile Iron 10 stud hub w/ 335mm Dia. Bolt Circle. Uses Outboard Drum - Serrated stud	K30	752 759	742 740	30
006	2134 Series Ductile Iron 10 stud hub w/ 11.25" Dia. Bolt Circle. Uses Outboard Drum - Serrated stud	K30	752 759	742 740	31
007	9518 Series Ductile Iron 10 stud hub w/ 335mm Dia. Bolt Circle. Uses Outboard Drum - Serrated stud	W (A45)	772 787	6535 6580	42
011	4000 Series Ductile Iron 6 stud hub w/ 8.07" Dia Bolt Circle. Uses Outboard Drum - Clipped Head Stud	I80 (FC)	JM207010 JM207049A	25820 25877	34
014	9442 Series Ductile Iron 10 stud hub w/ 335mm Dia. Bolt Circle. Uses Outboard Drum - Serrated stud	A65	892 896	6535 6580	41

Assembly Part Number Index

Assembly PN	Assembly Description Hub Casting Description	SAE Code	Inner Cup Inner Cone	Outer Cup Outer Cone	Catalog Page
001-00103	Hub Pilot, M22 x 3.97 Stud, 16.5 x 7" Drum Ductile Iron 10 stud hub w/ 335mm Dia. Bolt Circle. Uses Outboard Drum - Serrated stud	N	HM218210 HM218248	HM212011 HM212049	17
001-00103L	Hub Pilot, M22 x 4.82 Stud, 16.5 x 7" Drum Ductile Iron 10 stud hub w/ 335mm Dia. Bolt Circle. Uses Outboard Drum - Serrated stud	N	HM218210 HM218248	HM212011 HM212049	17
001-00104	Hub Pilot, M22 x 3.73 Stud, 16.5 x 7" Drum Ductile Iron 10 stud hub w/ 335mm Dia. Bolt Circle. Uses Outboard Drum - Serrated stud	N	HM218210 HM218248	HM212011 HM212049	17
001-00133	Hub Pilot, M22 x 3.97 Stud, 12.25 x 7.5" Drum Ductile Iron 8 stud hub w/ 275mm Dia. Bolt Circle. Uses Outboard Drum - Serrated stud	N	HM218210 HM218248	HM212011 HM212049	18



Assembly Part Number Index

Assembly PN	Assembly Description Hub Casting Description	SAE Code	Inner Cup Inner Cone	Outer Cup Outer Cone	Catalog Page
001-00133L	Hub Pilot, M22 x 4.82 Stud, 12.25 x 7.5" Drum Ductile Iron 8 stud hub w/ 275mm Dia. Bolt Circle. Uses Outboard Drum - Serrated stud	N	HM218210 HM218248	HM212011 HM212049	18
001-00225	Hub Pilot, M22 x 3.97 Stud, 16.5 x 7" XHD Drum Bal Ductile Iron 10 stud hub (2Gen) w/ 11.25" Dia. Bolt Circle. Uses Outboard Drum - Serrated stud	N	HM218210 HM218248	HM212011 HM212049	23
001-00225L	Hub Pilot, M22 x 4.82 Stud, 16.5 x 7" XHD Drum Bal Ductile Iron 10 stud hub (2Gen) w/ 11.25" Dia. Bolt Circle. Uses Outboard Drum - Serrated stud	N	HM218210 HM218248	HM212011 HM212049	23
001-01000	Hub Pilot, M22 x 3.97 Stud, 16.5 x 5" Drum Bal Ductile Iron 10 stud hub (2Gen) w/ 11.25" Dia. Bolt Circle. Uses Outboard Drum - Serrated stud	N	HM218210 HM218248	HM212011 HM212049	23
001-01000L	Hub Pilot, M22 x 4.82 Stud, 16.5 x 5" Drum Bal Ductile Iron 10 stud hub (2Gen) w/ 11.25" Dia. Bolt Circle. Uses Outboard Drum - Serrated stud	N	HM218210 HM218248	HM212011 HM212049	23
001-01001	Hub Pilot, M22 x 3.97 Stud, 16.5 x 8-5/8" Drum Bal Ductile Iron 10 stud hub (2Gen) w/ 11.25" Dia. Bolt Circle. Uses Outboard Drum - Serrated stud	N	HM218210 HM218248	HM212011 HM212049	23
001-01001L	Hub Pilot, M22 x 4.82 Stud, 16.5 x 8-5/8" Drum Bal Ductile Iron 10 stud hub (2Gen) w/ 11.25" Dia. Bolt Circle. Uses Outboard Drum - Serrated stud	N	HM218210 HM218248	HM212011 HM212049	23
001-01025	Hub Pilot, M22 x 3.97 Stud, 16.5 x 7" Drum Ductile Iron 10 stud hub (2Gen) w/ 11.25" Dia. Bolt Circle. Uses Outboard Drum - Serrated stud	N	HM218210 HM218248	HM212011 HM212049	23
001-01025L	Hub Pilot, M22 x 4.82 Stud, 16.5 x 7" Drum Ductile Iron 10 stud hub (2Gen) w/ 11.25" Dia. Bolt Circle. Uses Outboard Drum - Serrated stud	N	HM218210 HM218248	HM212011 HM212049	23
001-01026	Stud Pilot, 3/4-16 RH Stud, 16.5 x 7" Drum Ductile Iron 10 stud hub (2Gen) w/ 11.25" Dia. Bolt Circle. Uses Outboard Drum - Serrated stud	N	HM218210 HM218248	HM212011 HM212049	23
001-01026L	Stud Pilot, 3/4-16 RH Long Stud, 16.5 x 7" Drum Ductile Iron 10 stud hub (2Gen) w/ 11.25" Dia. Bolt Circle. Uses Outboard Drum - Serrated stud	N	HM218210 HM218248	HM212011 HM212049	23
001-01027	Stud Pilot, 3/4-16 LH Stud, 16.5 x 7" Drum Ductile Iron 10 stud hub (2Gen) w/ 11.25" Dia. Bolt Circle. Uses Outboard Drum - Serrated stud	N	HM218210 HM218248	HM212011 HM212049	23
001-01027L	Stud Pilot, 3/4-16 LH Long Stud, 16.5 x 7" Drum Ductile Iron 10 stud hub (2Gen) w/ 11.25" Dia. Bolt Circle. Uses Outboard Drum - Serrated stud	N	HM218210 HM218248	HM212011 HM212049	23
001-01070	Hub Pilot, M22 x 3.97 Stud, 15.0 x 8-5/8" Drum Bal Ductile Iron 10 stud hub (2Gen) w/ 11.25" Dia. Bolt Circle. Uses Outboard Drum - Serrated stud	N	HM218210 HM218248	HM212011 HM212049	23
001-01070L	Hub Pilot, M22 x 3.97 Stud, 15.0 x 8-5/8" Drum Bal Ductile Iron 10 stud hub (2Gen) w/ 11.25" Dia. Bolt Circle. Uses Outboard Drum - Serrated stud	N	HM218210 HM218248	HM212011 HM212049	23
001-02540	Hub Pilot, M22 x 3.73 Stud, 16.5 x 6" Drum Bal Ductile Iron 10 stud hub w/ 11.25" Dia. Bolt Circle. Uses Outboard Drum - Serrated stud	N	HM218210 HM218248	HM212011 HM212049	33
001-02540L	Hub Pilot, M22 x 3.97 Stud, 16.5 x 6" Drum Bal Ductile Iron 10 stud hub w/ 11.25" Dia. Bolt Circle. Uses Outboard Drum - Serrated stud	N	HM218210 HM218248	HM212011 HM212049	33
001-02540X	Hub Pilot, M22 x 4.25 Stud, 16.5 x 6" Drum Bal Ductile Iron 10 stud hub w/ 11.25" Dia. Bolt Circle. Uses Outboard Drum - Serrated stud	N	HM218210 HM218248	HM212011 HM212049	33
001-02545	Hub Pilot, M22 x 3.73 Stud, 16.5 x 5" Drum Bal Ductile Iron 10 stud hub w/ 11.25" Dia. Bolt Circle. Uses Outboard Drum - Serrated stud	N	HM218210 HM218248	HM212011 HM212049	33
001-02545L	Hub Pilot, M22 x 3.97 Stud, 16.5 x 5" Drum Bal Ductile Iron 10 stud hub w/ 11.25" Dia. Bolt Circle. Uses Outboard Drum - Serrated stud	N	HM218210 HM218248	HM212011 HM212049	33

Assembly Part Number Index



Assembly PN	Assembly Description Hub Casting Description	SAE Code	Inner Cup Inner Cone	Outer Cup Outer Cone	Catalog Page
001-02546	Hub Pilot, M22 x 3.70 Stud, 15 x 6" Drum Bal Ductile Iron 10 stud hub w/ 11.25" Dia. Bolt Circle. Uses Outboard Drum - Serrated stud	N	HM218210 HM218248	HM212011 HM212049	33
001-02546L	Hub Pilot, M22 x 3.97 Stud, 15 x 6" Drum Bal Ductile Iron 10 stud hub w/ 11.25" Dia. Bolt Circle. Uses Outboard Drum - Serrated stud	N	HM218210 HM218248	HM212011 HM212049	33
001-02546X	Hub Pilot, M22 x 4.25 Stud, 15 x 6" Drum Bal Ductile Iron 10 stud hub w/ 11.25" Dia. Bolt Circle. Uses Outboard Drum - Serrated stud	N	HM218210 HM218248	HM212011 HM212049	33
001-02547	Hub Pilot, M22 x 3.70 Stud, 16.5 x 7" Drum Bal Ductile Iron 10 stud hub w/ 11.25" Dia. Bolt Circle. Uses Outboard Drum - Serrated stud	N	HM218210 HM218248	HM212011 HM212049	33
001-02547L	Hub Pilot, M22 x 3.97 Stud, 16.5 x 7" Drum Bal Ductile Iron 10 stud hub w/ 11.25" Dia. Bolt Circle. Uses Outboard Drum - Serrated stud	N	HM218210 HM218248	HM212011 HM212049	33
001-10061	Stud Pilot, 3/4-16 RH Stud, 16.5 x 7" Drum Ductile Iron 10 stud hub w/ 11.25" Dia. Bolt Circle. Uses Inboard Drum - Shoulder Stud	N	HM218210 HM218248	HM212011 HM212049	21
001-10062	Stud Pilot, 3/4-16 LH Stud, 16.5 x 7" Drum Ductile Iron 10 stud hub w/ 11.25" Dia. Bolt Circle. Uses Inboard Drum - Shoulder Stud	N	HM218210 HM218248	HM212011 HM212049	21
001-10511	Stud Pilot, 3/4-16 RH 12.25" x 7.5" Drum Ductile Iron 10 stud hub w/ 8.75" Dia. Bolt Circle. Uses Inboard Drum - Shoulder Stud	N	HM218210 HM218248	HM212011 HM212049	26
001-10512	Stud Pilot, 3/4-16 LH 12.25" x 7.5" Drum Ductile Iron 10 stud hub w/ 8.75" Dia. Bolt Circle. Uses Inboard Drum - Shoulder Stud	N	HM218210 HM218248	HM212011 HM212049	26
001-1HTR07000F	Hub/Rotor ASSY, TN ADB Hub w/fill port-11.25" BC, M22 x 3.97" PAN22 Rotor Ductile Iron 10 stud ADB hub w/ 11.25" Dia. Bolt Circle. Uses PAN19/22 Rotor- Serrated stud	N	HM218210 HM218248	HM212011 HM212049	19
001-1HTR07000FL	Hub/Rotor ASSY, TN ADB Hub w/fill port-11/25" BC, M22 x 4.82" PAN22 Rotor Ductile Iron 10 stud ADB hub w/ 11.25" Dia. Bolt Circle. Uses PAN19/22 Rotor- Serrated stud	N	HM218210 HM218248	HM212011 HM212049	19
001-21025	Hub Pilot, M22 x 3.97 Stud, 16.5 x 7" Drum Bal Ductile Iron 10 stud hub (2Gen) w/ 11.25" Dia. Bolt Circle. Uses Outboard Drum - Serrated stud	N	HM218210 HM218248	HM212011 HM212049	23
001-21025L	Hub Pilot, M22 x 4.82 Stud, 16.5 x 7" Drum Bal Ductile Iron 10 stud hub (2Gen) w/ 11.25" Dia. Bolt Circle. Uses Outboard Drum - Serrated stud	N	HM218210 HM218248	HM212011 HM212049	23
001-75000	5-Spoke x 20" 16.5 x 7" Brake Drum Ductile Iron 5-spoke 20"	N	HM218210 HM218248	HM212011 HM212049	40
001-81025	Hub Pilot, M22 x 3.97 Stud, 16.5 x 7" Trident Drum Ductile Iron 10 stud hub (2Gen) w/ 11.25" Dia. Bolt Circle. Uses Outboard Drum - Serrated stud	N	HM218210 HM218248	HM212011 HM212049	23
001-81025L	Hub Pilot, M22 x 4.82" Stud, 16.5 x 7" Trident Drum Ductile Iron 10 stud hub (2Gen) w/ 11.25" Dia. Bolt Circle. Uses Outboard Drum - Serrated stud	N	HM218210 HM218248	HM212011 HM212049	23
002-00137	Hub Pilot, M22 x 3.70 Stud, 15 x 4" Drum Bal Ductile Iron 10 stud hub w/ 11.25" Dia. Bolt Circle. Uses Outboard Drum - Serrated stud	FF/FG	HM212011 HM212049	3720 3782	28
002-00137L	Hub Pilot, M22 x 3.97 Stud, 15 x 4" Drum Bal Ductile Iron 10 stud hub w/ 11.25" Dia. Bolt Circle. Uses Outboard Drum - Serrated stud	FF/FG	HM212011 HM212049	3720 3782	28
002-00138	Stud Pilot, 3/4-16 RH Stud, 15 x 4" Drum Bal Ductile Iron 10 stud hub w/ 11.25" Dia. Bolt Circle. Uses Outboard Drum - Serrated stud	FF/FG	HM212011 HM212049	3720 3782	28



Assembly Part Number Index

Assembly PN	Assembly Description Hub Casting Description	SAE Code	Inner Cup Inner Cone	Outer Cup Outer Cone	Catalog Page
002-00139	Stud Pilot, 3/4-16 LH Stud, 15 x 4" Drum Bal Ductile Iron 10 stud hub w/ 11.25" Dia. Bolt Circle. Uses Outboard Drum - Serrated stud	FF/FG	HM212011 HM212049	3720 3782	28
002-00142	Hub Pilot, M22 x 3.70 Stud, 16.5 x 5" Drum Bal Ductile Iron 10 stud hub w/ 11.25" Dia. Bolt Circle. Uses Outboard Drum - Serrated stud	FF/FG	HM212011 HM212049	3720 3782	28
002-00142L	Hub Pilot, M22 x 3.97 Stud, 16.5 x 5" Drum Bal Ductile Iron 10 stud hub w/ 11.25" Dia. Bolt Circle. Uses Outboard Drum - Serrated stud	FF/FG	HM212011 HM212049	3720 3782	28
002-00144	Hub Pilot, M22 x 3.70 Stud, 15 x 5" Drum Bal Ductile Iron 10 stud hub w/ 11.25" Dia. Bolt Circle. Uses Outboard Drum - Serrated stud	FF/FG	HM212011 HM212049	3720 3782	28
002-00144L	Hub Pilot, M22 x 3.97 Stud, 15 x 5" Drum Bal Ductile Iron 10 stud hub w/ 11.25" Dia. Bolt Circle. Uses Outboard Drum - Serrated stud	FF/FG	HM212011 HM212049	3720 3782	28
002-00200	Hub Pilot, M22 x 3.73 Stud, 15 x 4" Drum Bal Ductile Iron 10 stud hub w/ 11.25" Dia. Bolt Circle. Uses Outboard Drum - Serrated stud	FF/FG	HM212011 HM212049	3720 3782	29
002-00200L	Hub Pilot, M22 x 3.97 Stud, 15 x 4" Drum Bal Ductile Iron 10 stud hub w/ 11.25" Dia. Bolt Circle. Uses Outboard Drum - Serrated stud	FF/FG	HM212011 HM212049	3720 3782	29
002-00237	Hub Pilot, M22 x 3.73 Stud, 15 x 4" Drum Bal Ductile Iron 10 stud hub w/ 11.25" Dia. Bolt Circle. Uses Outboard Drum - Serrated stud	FF/FG	HM212011 HM212049	3720 3782	32
002-00237L	Hub Pilot, M22 x 3.97 Stud, 15 x 4" Drum Bal Ductile Iron 10 stud hub w/ 11.25" Dia. Bolt Circle. Uses Outboard Drum - Serrated stud	FF/FG	HM212011 HM212049	3720 3782	32
004-00130	Hub Pilot, M22 x 3.97 Stud, 16.5 x 7" Drum Ductile Iron 10 stud hub w/ 11.25" Dia. Bolt Circle. Uses Outboard drum - Serrated stud	P	HM518410 HM518445	HM518410 HM518445	27
004-00130L	Hub Pilot, M22 x 4.82 Stud, 16.5 x 7" Drum Ductile Iron 10 stud hub w/ 11.25" Dia. Bolt Circle. Uses Outboard drum - Serrated stud	P	HM518410 HM518445	HM518410 HM518445	27
004-00131	Stud Pilot, 3/4-16 RH Stud, 16.5 x 7" Drum Ductile Iron 10 stud hub w/ 11.25" Dia. Bolt Circle. Uses Outboard drum - Serrated stud	P	HM518410 HM518445	HM518410 HM518445	27
004-00132	Stud Pilot, 3/4-16 LH Stud, 16.5 x 7" Drum Ductile Iron 10 stud hub w/ 11.25" Dia. Bolt Circle. Uses Outboard drum - Serrated stud	P	HM518410 HM518445	HM518410 HM518445	27
004-01043	Hub Pilot, M22 x 3.97 Stud, 16.5 x 7" Drum Ductile Iron 10 stud hub w/ 11.25" Dia. Bolt Circle. Uses Outboard drum - Serrated stud	P	HM518410 HM518445	HM518410 HM518445	25
004-01043L	Hub Pilot, M22 x 4.82 Stud, 16.5 x 7" Drum Ductile Iron 10 stud hub w/ 11.25" Dia. Bolt Circle. Uses Outboard drum - Serrated stud	P	HM518410 HM518445	HM518410 HM518445	25
004-01048	Hub Pilot, M22 x 3.97 Stud, 16.5 x 8 5/8" Drum Bal Ductile Iron 10 stud hub w/ 11.25" Dia. Bolt Circle. Uses Outboard drum - Serrated stud	P	HM518410 HM518445	HM518410 HM518445	25
004-01048L	Hub Pilot, M22 x 4.82 Stud, 16.5 x 8 5/8" Drum Bal Ductile Iron 10 stud hub w/ 11.25" Dia. Bolt Circle. Uses Outboard drum - Serrated stud	P	HM518410 HM518445	HM518410 HM518445	25
004-01050	Stud Pilot, 3/4-16 RH Stud, 16.5 x 7" Drum Ductile Iron 10 stud hub w/ 11.25" Dia. Bolt Circle. Uses Outboard drum - Serrated stud	P	HM518410 HM518445	HM518410 HM518445	25
004-01051	Stud Pilot, 3/4-16 LH Stud, 16.5 x 7" Drum Ductile Iron 10 stud hub w/ 11.25" Dia. Bolt Circle. Uses Outboard drum - Serrated stud	P	HM518410 HM518445	HM518410 HM518445	25

Assembly Part Number Index



Assembly PN	Assembly Description Hub Casting Description	SAE Code	Inner Cup Inner Cone	Outer Cup Outer Cone	Catalog Page
004-1HTR47001F	Hub/Rotor ASSY, TP ADB Hub w/fill port-11.25" BC, M22x3.97" PAN22 Rotor Ductile Iron 10 stud ADB hub w/ 11.25" Dia. Bolt Circle. Uses PAN22 Rotor - Serrated stud	P	HM518410 HM518445	HM518410 HM518445	48
004-1HTR47001FL	Hub/Rotor ASSY, TP ADB Hub w/fill port-11/25" BC, M22x4.82" PAN22 Rotor Ductile Iron 10 stud ADB hub w/ 11.25" Dia. Bolt Circle. Uses PAN22 Rotor - Serrated stud	P	HM518410 HM518445	HM518410 HM518445	48
004-21043	Hub Pilot, M22 x 3.97 Stud, 16.5 x 7" Drum Bal Ductile Iron 10 stud hub w/ 11.25" Dia. Bolt Circle. Uses Outboard drum - Serrated stud	P	HM518410 HM518445	HM518410 HM518445	25
004-21043L	Hub Pilot, M22 x 4.82 Stud, 16.5 x 7" Drum Bal Ductile Iron 10 stud hub w/ 11.25" Dia. Bolt Circle. Uses Outboard drum - Serrated stud	P	HM518410 HM518445	HM518410 HM518445	25
004-40110	Hub Pilot, M22 x 3.97 Stud, 16.5 x 7" Drum Ductile Iron 10 stud hub w/ 335mm Dia. Bolt Circle. Uses Outboard Drum - Serrated stud	P	HM518410 HM518445	HM518410 HM518445	35
004-40110L	Hub Pilot, M22 x 4.82 Stud, 16.5 x 7" Drum Ductile Iron 10 stud hub w/ 335mm Dia. Bolt Circle. Uses Outboard Drum - Serrated stud	P	HM518410 HM518445	HM518410 HM518445	35
004-40310	Hub Pilot, M22 x 3.97 Stud, 16.5 x 7" Drum Ductile Iron 10 stud hub w/ 335mm Dia. Bolt Circle. Uses Outboard Drum - Serrated stud	P	HM518410 HM518445	HM518410 HM518445	36
004-40310L	Hub Pilot, M22 x 4.82 Stud, 16.5 x 7" Drum Ductile Iron 10 stud hub w/ 335mm Dia. Bolt Circle. Uses Outboard Drum - Serrated stud	P	HM518410 HM518445	HM518410 HM518445	36
004-41045	Hub Pilot, M22 x 3.97 Stud, 12.25 x 7.5" Drum Ductile Iron 8-stud hub w/ 275mm Dia. Bolt Circle. Uses Outboard drum - Serrated stud	P	HM518410 HM518445	HM518410 HM518445	37
004-41045L	Hub Pilot, M22 x 4.82 Stud, 12.25 x 7.5" Drum Ductile Iron 8-stud hub w/ 275mm Dia. Bolt Circle. Uses Outboard drum - Serrated stud	P	HM518410 HM518445	HM518410 HM518445	37
004-81043	Hub Pilot, M22 x 3.97 Stud, 16.5 x 7" Trident Drum Ductile Iron 10 stud hub w/ 11.25" Dia. Bolt Circle. Uses Outboard drum - Serrated stud	P	HM518410 HM518445	HM518410 HM518445	25
004-81043L	Hub Pilot, M22 x 3.82 Stud, 16.5 x 7" Trident Drum Ductile Iron 10 stud hub w/ 11.25" Dia. Bolt Circle. Uses Outboard drum - Serrated stud	P	HM518410 HM518445	HM518410 HM518445	25
005-51005L	Hub Pilot, M22 x 4.25 Stud, 16.5 x 6" Drum Bal Ductile Iron 10 stud hub w/ 11.25" Dia. Bolt Circle. Uses Outboard Drum - Serrated stud	FL	6420 6461A	552A 555S	39
005-51005X	Hub Pilot, M22 x 4.82 Stud, 16.5 x 6" Drum Bal Ductile Iron 10 stud hub w/ 11.25" Dia. Bolt Circle. Uses Outboard Drum - Serrated stud	FL	6420 6461A	552A 555S	39
006-02133	Hub Pilot, M22 x 3.97 Stud, 16.5 x 8-5/8" Drum Ductile Iron 10 stud hub w/ 335mm Dia. Bolt Circle. Uses Outboard Drum - Serrated stud	K30	752 759	742 740	30
006-02133L	Hub Pilot, M22 x 4.82 Stud, 16.5 x 8-5/8" Drum Ductile Iron 10 stud hub w/ 335mm Dia. Bolt Circle. Uses Outboard Drum - Serrated stud	K30	752 759	742 740	30
006-02134	Hub Pilot, M22 x 3.97 Stud, 16.5 x 7" Drum Bal Ductile Iron 10 stud hub w/ 11.25" Dia. Bolt Circle. Uses Outboard Drum - Serrated stud	K30	752 759	742 740	31
006-02134L	Hub Pilot, M22 x 4.82" Stud, 16.5 x 7" Drum Bal Ductile Iron 10 stud hub w/ 11.25" Dia. Bolt Circle. Uses Outboard Drum - Serrated stud	K30	752 759	742 740	31
006-02135	Hub Pilot, M22 x 3.97 Stud, 16.5 x 7" Drum Ductile Iron 10 stud hub w/ 335mm Dia. Bolt Circle. Uses Outboard Drum - Serrated stud	K30	752 759	742 740	30



Assembly Part Number Index

Assembly PN	Assembly Description Hub Casting Description	SAE Code	Inner Cup Inner Cone	Outer Cup Outer Cone	Catalog Page
006-02135L	Hub Pilot, M22 x 4.82 Stud, 16.5 x 7" Drum Ductile Iron 10 stud hub w/ 335mm Dia. Bolt Circle. Uses Outboard Drum - Serrated stud	K30	752 759	742 740	30
006-02136	Stud Pilot, 3/4-16 RH Stud, 16.5 x 7" Drum Bal Ductile Iron 10 stud hub w/ 11.25" Dia. Bolt Circle. Uses Outboard Drum - Serrated stud	K30	752 759	742 740	31
006-02137	Stud Pilot, 3/4-16 LH Stud, 16.5 x 7" Drum Bal Ductile Iron 10 stud hub w/ 11.25" Dia. Bolt Circle. Uses Outboard Drum - Serrated stud	K30	752 759	742 740	31
006-02138	Hub Pilot, M22 x 3.97 Stud, 16.5 x 8-5/8" Drum Bal Ductile Iron 10 stud hub w/ 11.25" Dia. Bolt Circle. Uses Outboard Drum - Serrated stud	K30	752 759	742 740	31
006-02138L	Hub Pilot, M22 x 4.82" Stud, 16.5 x 8-5/8" Drum Bal Ductile Iron 10 stud hub w/ 11.25" Dia. Bolt Circle. Uses Outboard Drum - Serrated stud	K30	752 759	742 740	31
007-09518	Hub Pilot M24 x 5.47 Stud, 18 x 7" Drum Ductile Iron 10 stud hub w/ 335mm Dia. Bolt Circle. Uses Outboard Drum - Serrated stud	W (A45)	772 787	6535 6580	42
011-04000L	Hub Pilot M18 x 3.15 Stud, 12.80 x 4" Drum Bal Ductile Iron 6 stud hub w/ 8.07" Dia Bolt Circle. Uses Outboard Drum - Clipped Head Stud	180 (FC)	JM207010 JM207049A	25820 25877	34
014-09442	Hub Pilot M24 x 5.47 Stud, 18 x 7" Drum Ductile Iron 10 stud hub w/ 335mm Dia. Bolt Circle. Uses Outboard Drum - Serrated stud	A65	892 896	6535 6580	41
R17-07017FL	Hub/Rotor ASSY, TN ADB Hub w/fill port-10.83" BC , M22x4.82" PAN17 Rotor Ductile Iron 10 stud ADB hub w/ 275mm Dia. Bolt Circle. Uses PAN17 Rotor - Serrated stud	N	HM218210 HM218248	HM212011 HM212049	20
R19-07000F	Hub/Rotor ASSY, TN ADB Hub w/fill port-11.25" BC , M22x3.97" PAN19 Rotor Ductile Iron 10 stud ADB hub w/ 11.25" Dia. Bolt Circle. Uses PAN19/22 Rotor- Serrated stud	N	HM218210 HM218248	HM212011 HM212049	19
R19-07000FL	Hub/Rotor ASSY, TN ADB Hub w/fill port-11/25" BC, M22x4.82" PAN19 Rotor Ductile Iron 10 stud ADB hub w/ 11.25" Dia. Bolt Circle. Uses PAN19/22 Rotor- Serrated stud	N	HM218210 HM218248	HM212011 HM212049	19
R19-47001F	Hub/Rotor ASSY, TP ADB Hub w/fill port-11.25" BC , M22x3.97" PAN19 Rotor Ductile Iron 10 stud ADB hub w/ 11.25" Dia. Bolt Circle. Uses PAN22 Rotor - Serrated stud	P	HM518410 HM518445	HM518410 HM518445	48
R19-47001FL	Hub/Rotor ASSY, TP ADB Hub w/fill port-11/25" BC, M22x4.82" PAN19 Rotor Ductile Iron 10 stud ADB hub w/ 11.25" Dia. Bolt Circle. Uses PAN22 Rotor - Serrated stud	P	HM518410 HM518445	HM518410 HM518445	48

Assembly Part Number Index by Webb Hub PN



Webb PN	KIC PN	Description	SAE Designation	Catalog Page
20231UQ3	001-01025	Hub Pilot, M22 x 3.94 Stud, 16.5 x 7" Drum	N	23
20231UQ5	001-01025L	Hub Pilot, M22 x 4.79 Stud, 16.5 x 7" Drum	N	23
20231UQML	001-01027	Stud Pilot, 3/4-16 LH Stud, 16.5 x 7" Drum	N	23
20231UQMR	001-01026	Stud Pilot, 3/4-16 RH Stud, 16.5 x 7" Drum	N	23
20271CW3	001-00133	Hub Pilot, M22 x 3.94 Stud, 12.25 x 7.5" Drum	N	18
20271CW5	001-00133L	Hub Pilot, M22 x 4.79 Stud, 12.25 x 7.5" Drum	N	18
20331FJ3	001-00103	Hub Pilot, M22 x 3.94 Stud, 16.5 x 7" Drum	N	17
20331FJ5	001-00103L	Hub Pilot, M22 x 4.79 Stud, 16.5 x 7" Drum	N	17
24011UH4	006-02134	Hub Pilot, M22 x 3.94 Stud, 16.5 x 7" Drum	K30	31
24311FJ3	006-02135	Hub Pilot, M22 x 3.94 Stud, 16.5 x 7" Drum	K30	30
24331FK3	006-02133	Hub Pilot, M22 x 3.94 Stud, 16.5 x 8-5/8" Drum	K30	30
25201RX1	002-00137	Hub Pilot, M22 x 3.70 Stud, 15 x 4" Drum Bal	FF/FG	28
25401KN3	001-02545L	Hub Pilot, M22 x 3.94 Stud, 16.5 x 5" Drum Bal	N	33
25401KV3	001-02540L	Hub Pilot, M22 x 3.94 Stud, 16.5 x 6" Drum Bal	N	33
25401RK3	001-02547L	Hub Pilot, M22 x 3.94 Stud, 16.5 x 7" Drum Bal	N	33



00103 Series Assemblies

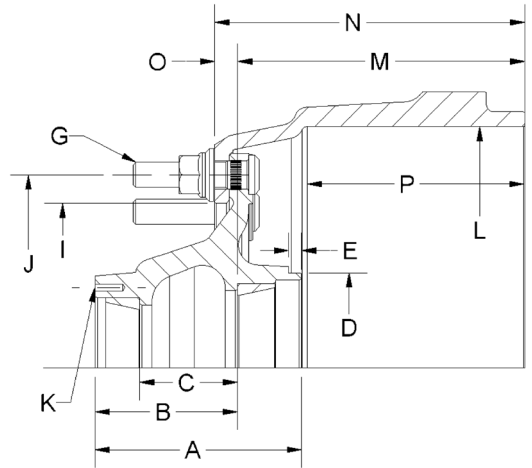
Ductile Iron 10 stud hub w/ 335mm Dia. Bolt Circle. Uses Outboard Drum - Serrated stud

SAE "N" Spindle

Inner Bearing Cup / Cone	HM218210 / HM218248
Outer Bearing Cup / Cone	HM212011 / HM212049

Hub Specifications

Std. Hub Weight	59 lbs.
A: Hub Overall Length	7.06
B: Inner Cup to Hub Face	4.87
C: Distance Between Cups	3.35
D: Tone Ring Bore Diameter	6.50
E: Tone Ring Bore Depth	0.44
J: Bolt Circle	335mm (13.19")
K: Bolt Pattern/Thread	6 Holes 5/16"-18 UNC, 5.50 Bolt Circle



Assembly PN	Drum PN				G: Stud PN		M - Cup to Drum	Assy Weight	Drum Image
	L Brake Face Dia	P Brake Face Width	I Hub Pilot	N Overall Depth	Thread	Stud Stand Out	O Cup to Mtg. Flange		
001-00103	54250-01				PRT-00117		9.81	177	
Hub Pilot, M22 x 3.97 Stud, 16.5 x 7" Drum	16.50	7.50	11.25	10.60	M22 x 1.5	2.68	0.78		
001-00103L	54250-01				PRT-00118		9.81	179	
Hub Pilot, M22 x 4.82 Stud, 16.5 x 7" Drum	16.50	7.50	11.25	10.60	M22 x 1.5	3.53	0.78		
001-00104	54250-01				PRT-00121		9.81	177	
Hub Pilot, M22 x 3.73 Stud, 16.5 x 7" Drum	16.50	7.50	11.25	10.60	M22 x 1.5	2.44	0.78		

Option "T" - ABS Tone Ring

Part Number	PRT-13237
Description	100-Tooth Tone Ring - Powdered Metal
Pitch Diameter	6.77



00133 Series Assemblies



Ductile Iron 8 stud hub w/ 275mm Dia. Bolt Circle. Uses Outboard Drum - Serrated stud

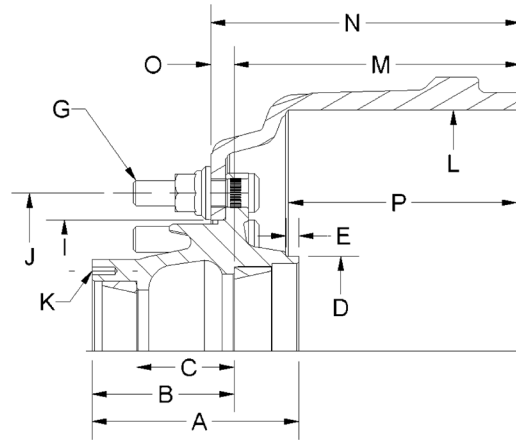
SAE "N" Spindle

Inner Bearing Cup / Cone HM218210 / HM218248

Outer Bearing Cup / Cone HM212011 / HM212049

Hub Specifications

Std. Hub Weight	41 lbs.
A: Hub Overall Length	7.09
B: Inner Cup to Hub Face	4.88
C: Distance Between Cups	3.35
D: Tone Ring Bore Diameter	6.39
E: Tone Ring Bore Depth	0.34
J: Bolt Circle	275mm (10.83")
K: Bolt Pattern/Thread	6 Holes 5/16"-18 UNC, 5.50 Bolt Circle



Assembly PN	Drum PN				G: Stud PN		M - Cup to Drum	Assy Weight	Drum Image
	L Brake Face Dia	P Brake Face Width	I Hub Pilot	N Overall Depth	Thread	Stud Stand Out	O Cup to Mtg. Flange		
001-00133			54244-01			PRT-00117	10.43	128	
Hub Pilot, M22 x 3.97 Stud, 12.25 x 7.5" Drum	12.25	10.62	9.00	11.22	M22 x 1.5	2.68	0.79		
001-00133L			54244-01			PRT-00118	10.43	129	
Hub Pilot, M22 x 4.82 Stud, 12.25 x 7.5" Drum	12.25	10.62	9.00	11.22	M22 x 1.5	3.53	0.79		

Option "T" - ABS Tone Ring

Part Number PRT-10981
Description 80-Tooth Tone Ring

Notes

Fill port option available.





07000 Series Assemblies

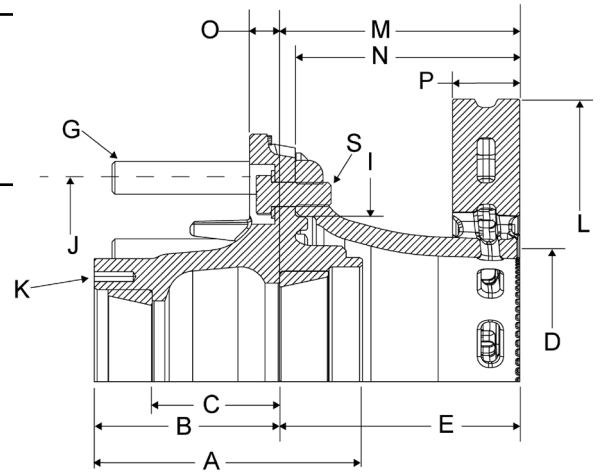
Ductile Iron 10 stud ADB hub w/ 11.25" Dia. Bolt Circle. Uses PAN19/22 Rotor- Serrated stud

SAE "N" Spindle

Inner Bearing Cup / Cone	HM218210 / HM218248
Outer Bearing Cup / Cone	HM212011 / HM212049

Hub Specifications

Std. Hub Weight	53 lbs.
A: Hub Overall Length	7.06
B: Inner Cup to Hub Face	4.89
C: Distance Between Cups	3.35
J: Bolt Circle	285.75mm (11.25")
K: Bolt Pattern	6 Holes 5/16"-18 UNC, 5.50 Bolt Circle



Assembly PN	Rotor PN				G - Stud PN		M - Cup to Rotor	Assy Weight	Rotor Image
	L	P	I	N	Thread	Stud Stand Out	O		
	Rotor Dia	Disc Thickness	Hub Pilot	Overall Depth			Cup to Mtg. Flange		
	D	E			S - Screws & Washers				
Description	Tone Ring Pitch Dia.	Inner Cup To ABS							
001-1HTR07000F	R6225M				PRT-00117	6.31	133		
Hub/Rotor ASSY, TN ADB Hub w/fill port-11.25" BC, M22 x 3.97" PAN22 Rotor	16.93	1.76	8.659	5.90	M22 x 1.5	2.77			0.79
	7.25 Ref.	6.31			10 ea. W1565 (5/8-11) & W889				
001-1HTR07000FL	R6225M				PRT-00118	6.31	135		
Hub/Rotor ASSY, TN ADB Hub w/fill port-11/25" BC, M22 x 4.82" PAN22 Rotor	16.93	1.76	8.659	5.90	M22 x 1.5	3.62			0.79
	7.25 Ref.	6.31			10 ea. W1565 (5/8-11) & W889				
R19-07000F	71950				PRT-00117	6.32	120		
Hub/Rotor ASSY, TN ADB Hub w/fill port-11.25" BC, M22x3.97" PAN19 Rotor	14.84	1.77	8.659	5.91	M22 x 1.5	2.77			0.79
	7.25 Ref.	6.32			10 ea. PRT-07240 (M16) & PRT-07246				
R19-07000FL	71950				PRT-00118	6.32	121		
Hub/Rotor ASSY, TN ADB Hub w/fill port-11/25" BC, M22x4.82" PAN19 Rotor	14.84	1.77	8.659	5.91	M22 x 1.5	3.62			0.79
	7.25 Ref.	6.32			10 ea. PRT-07240 (M16) & PRT-07246				

Notes

Fill Plug PRT-01300 installed



07017 Series Assemblies



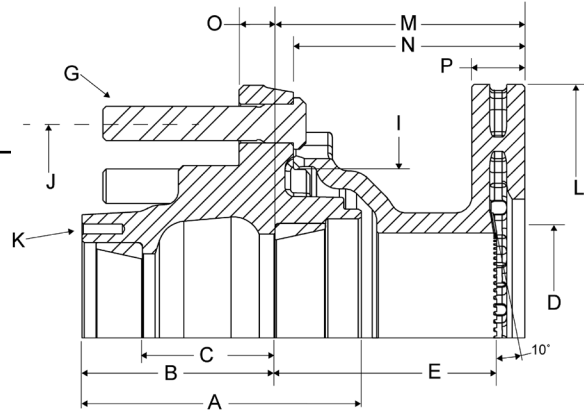
Ductile Iron 10 stud ADB hub w/ 275mm Dia. Bolt Circle. Uses PAN17 Rotor - Serrated stud

SAE "N" Spindle

Inner Bearing Cup / Cone HM218210 / HM218248
 Outer Bearing Cup / Cone HM212011 / HM212049

Hub Specifications

Std. Hub Weight 57 lbs.
 A: Hub Overall Length 7.07
 B: Inner Cup to Hub Face 4.88
 C: Distance Between Cups 3.35
 J: Bolt Circle 275mm (10.83")
 K: Bolt Pattern 6 Holes 5/16"-18 UNC,
 5.50 Bolt Circle



Assembly PN	Rotor PN				G - Stud PN		M - Cup to Rotor	Assy Weight	Rotor Image
	L	P	I	N	Thread	Stud Stand Out	O		
	Rotor Dia	Disc Thickness	Hub Pilot	Overall Depth			Cup to Mtg. Flange		
Description	D	E			S - Screws & Washers				
	Tone Ring Pitch Dia.	Inner Cup To ABS							

R17-07017FL

Hub/Rotor ASSY, TN ADB Hub w/fill port-10.83"
 BC, M22x4.82" PAN17 Rotor

		71750			PRT-00118	6.32			
	12.76	1.34	8.659	5.85	M22 x 1.5	3.44	0.91	102	
	5.80 Ref.	5.56 ref.							



Notes

Fill Plug PRT-01300 installed

Hub assembly, rotor and 8 M14x2 Socket Head Screws (PRT-01640) are assembled together for shipping purpose only.





1006 Series Assemblies

Ductile Iron 10 stud hub w/ 11.25" Dia. Bolt Circle. Uses Inboard Drum - Shoulder Stud

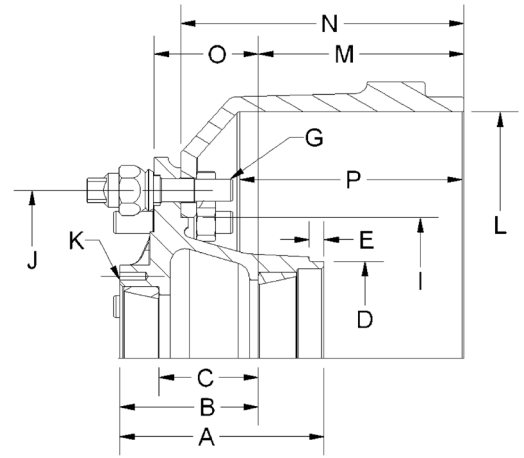
SAE "N" Spindle

Inner Bearing Cup / Cone HM218210 / HM218248

Outer Bearing Cup / Cone HM212011 / HM212049

Hub Specifications

Std. Hub Weight	48 lbs.
A: Hub Overall Length	6.84
B: Inner Cup to Hub Face	4.64
C: Distance Between Cups	3.35
D: Tone Ring Bore Diameter	6.50
E: Tone Ring Bore Depth	0.45
J: Bolt Circle	11.25
K: Bolt Pattern/Thread	6 Holes 5/16"-18 UNC, 5.50 Bolt Circle



Assembly PN	Drum PN				G: Stud PN		M - Cup to Drum	Assy Weight	Drum Image
	L Brake Face Dia	P Brake Face Width	I Hub Pilot	N Overall Depth	Thread	Stud Stand Out	O Cup to Mtg.Flange		
001-10061	RH	52020-01			PRT-00874		6.90	148	
Stud Pilot, 3/4-16 RH Stud, 16.5 x 7" Drum	16.50	7.47	9.44	9.50	3/4-16 RH	1.33	3.49		
001-10062	LH	52020-01			PRT-00875		6.90	148	
Stud Pilot, 3/4-16 LH Stud, 16.5 x 7" Drum	16.50	7.47	9.44	9.50	3/4-16 LH	1.33	3.49		

Option "T" - ABS Tone Ring

Part Number PRT-13237
Description 100-Tooth Tone Ring - Powdered Metal

Notes

Uses PRT-00152 Locknut



This page intentionally left blank





1025 Series Assemblies

Ductile Iron 10 stud hub (2Gen) w/ 11.25" Dia. Bolt Circle. Uses Outboard Drum - Serrated stud

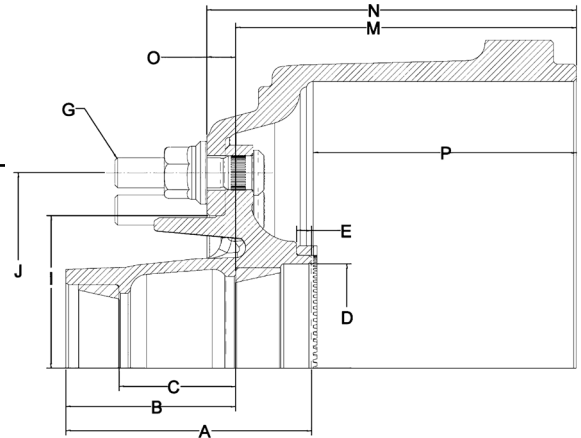
SAE "N" Spindle

Inner Bearing Cup / Cone HM218210 / HM218248

Outer Bearing Cup / Cone HM212011 / HM212049

Hub Specifications

Std. Hub Weight	44 lbs.
A: Hub Overall Length	7.06
B: Inner Cup to Hub Face	4.88
C: Distance Between Cups	3.35
D: Tone Ring Bore Diameter	6.50
E: Tone Ring Bore Depth	0.43
J: Bolt Circle	11.25
K: Bolt Pattern/Thread	6 Holes 5/16"-18 UNC, 5.50 Bolt Circle








Assembly PN	Drum PN				G: Stud PN		M - Cup to Drum	Assy Weight	Drum Image
	L Brake Face Dia	P Brake Face Width	I Hub Pilot	N Overall Depth	Thread	Stud Stand Out	O Cup to Mtg. Flange		
001-00225		54261-018			PRT-00117		9.78	170	
Hub Pilot, M22 x 3.97 Stud, 16.5 x 7" XHD Drum Bal	16.50	7.60	8.78	10.59	M22 x 1.5	2.66	0.81		
001-00225L		54261-018			PRT-00118		9.78	171	
Hub Pilot, M22 x 4.82 Stud, 16.5 x 7" XHD Drum Bal	16.50	7.60	8.78	10.59	M22 x 1.5	3.51	0.81		
001-01000		54257-018			PRT-00117		7.77	142	
Hub Pilot, M22 x 3.97 Stud, 16.5 x 5" Drum Bal	16.50	5.50	8.78	8.56	M22 x 1.5	2.68	0.79		
001-01000L		54257-018			PRT-00118		7.77	144	
Hub Pilot, M22 x 4.82 Stud, 16.5 x 5" Drum Bal	16.50	5.50	8.78	8.56	M22 x 1.5	3.53	0.79		
001-01001		54229-018			PRT-00117		10.6	161	
Hub Pilot, M22 x 3.97 Stud, 16.5 x 8-5/8" Drum Bal	16.50	9.06	8.78	11.46	M22 x 1.5	2.61	0.86		
001-01001L		54229-018			PRT-00118		10.6	163	
Hub Pilot, M22 x 4.82 Stud, 16.5 x 8-5/8" Drum Bal	16.50	9.06	8.78	11.46	M22 x 1.5	3.46	0.86		
001-01025		60001-01			PRT-00117		9.79	153	
Hub Pilot, M22 x 3.97 Stud, 16.5 x 7" Drum	16.50	7.56	8.78	10.62	M22 x 1.5	2.64	0.83		
001-01025L		60001-01			PRT-00118		9.79	154	
Hub Pilot, M22 x 4.82 Stud, 16.5 x 7" Drum	16.50	7.56	8.78	10.62	M22 x 1.5	3.49	0.83		
001-01026	RH	60001-01			PRT-01292		9.79	149	
Stud Pilot, 3/4-16 RH Stud, 16.5 x 7" Drum	16.50	7.56	8.78	10.62	3/4-16 RH	1.39	0.83		
001-01026L	RH	60001-01			PRT-01294		9.79	149	
Stud Pilot, 3/4-16 RH Long Stud, 16.5 x 7" Drum	16.50	7.56	8.78	10.62	3/4-16 RH	1.8	0.83		
001-01027	LH	60001-01			PRT-01293		9.79	149	
Stud Pilot, 3/4-16 LH Stud, 16.5 x 7" Drum	16.50	7.56	8.78	10.62	3/4-16 LH	1.39	0.83		
001-01027L	LH	60001-01			PRT-01295		9.79	149	
Stud Pilot, 3/4-16 LH Long Stud, 16.5 x 7" Drum	16.50	7.56	8.78	10.62	3/4-16 LH	1.8	0.83		
001-01070		54270-018			PRT-00117		10.95	167	
Hub Pilot, M22 x 3.97 Stud, 15.0 x 8-5/8" Drum Bal	15.00	9.25	8.78	11.75	M22 x 1.5	2.67	0.80		

1025 Series Assemblies



Ductile Iron 10 stud hub (2Gen) w/ 11.25" Dia. Bolt Circle. Uses Outboard Drum - Serrated stud

001-01070L			54270-018			PRT-00118	10.95		
Hub Pilot, M22 x 3.97 Stud, 15.0 x 8-5/8" Drum Bal	15.00	9.25	8.78	11.75	M22 x 1.5	3.52	0.80	169	
001-21025			60000-018			PRT-00117	9.78		
Hub Pilot, M22 x 3.97 Stud, 16.5 x 7" Drum Bal	16.50	7.56	8.78	10.56	M22 x 1.5	2.69	0.78	146	
001-21025L			60000-018			PRT-00118	9.78		
Hub Pilot, M22 x 4.82 Stud, 16.5 x 7" Drum Bal	16.50	7.56	8.78	10.56	M22 x 1.5	3.54	0.78	147	
001-81025			80002-018			PRT-00117	9.83		
Hub Pilot, M22 x 3.97 Stud, 16.5 x 7" Trident Drum	16.50	7.56	8.78	10.39	M22 x 1.5	2.91	0.56	135	
001-81025L			80002-018			PRT-00118	9.83		
Hub Pilot, M22 x 4.82" Stud, 16.5 x 7" Trident Drum	16.50	7.56	8.78	10.39	M22 x 1.5	3.76	0.56	136	

Option "T" - ABS Tone Ring

Part Number	PRT-13237
Description	100-Tooth Tone Ring - Powdered Metal
Pitch Diameter	6.77

Notes

001-01001 suitable for centerline brake shoes
Fill port option available.





1043 Series Assemblies

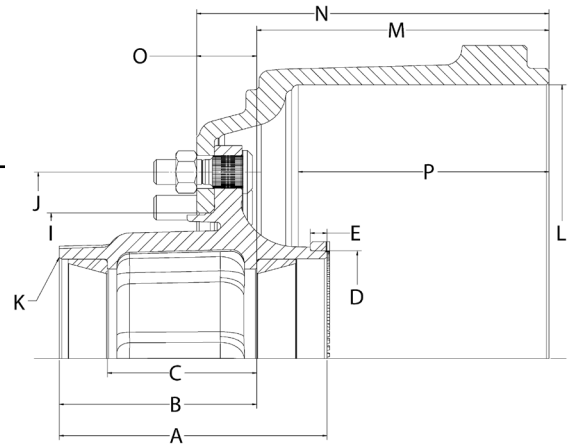
Ductile Iron 10 stud hub w/ 11.25" Dia. Bolt Circle. Uses Outboard drum - Serrated stud

SAE "P" Spindle

Inner Bearing Cup / Cone HM518410 / HM518445
 Outer Bearing Cup / Cone HM518410 / HM518445

Hub Specifications

Std. Hub Weight 48 lbs.
 A: Hub Overall Length 8.07
 B: Inner Cup to Hub Face 5.95
 C: Distance Between Cups 4.50
 D: Tone Ring Bore Diameter 6.50
 E: Tone Ring Bore Depth 0.51
 J: Bolt Circle 11.25
 K: Bolt Pattern/Thread 6 Holes 5/16"-18 UNC, 6.75 Bolt Circle



Assembly PN	Drum PN				G: Stud PN		M - Cup to Drum	Assy Weight	Drum Image	
	L Brake Face Dia	P Brake Face Width	I Hub Pilot	N Overall Depth	Thread	Stud Stand Out	O Cup to Mtg. Flange			
004-01043	60001-01				PRT-00117		8.81	156		
Hub Pilot, M22 x 3.97 Stud, 16.5 x 7" Drum	16.50	7.56	8.78	10.62	M22 x 1.5	2.60	1.81			
004-01043L	60001-01				PRT-00118		8.81	157		
Hub Pilot, M22 x 4.82 Stud, 16.5 x 7" Drum	16.50	7.56	8.78	10.62	M22 x 1.5	3.45	1.81			
004-01048	54229-018				PRT-00117		9.62	165		
Hub Pilot, M22 x 3.97 Stud, 16.5 x 8 5/8" Drum Bal	16.50	9.06	8.78	11.46	M22 x 1.5	2.57	1.84			
004-01048L	54229-018				PRT-00118		9.62	166		
Hub Pilot, M22 x 4.82 Stud, 16.5 x 8 5/8" Drum Bal	16.50	9.06	8.78	11.46	M22 x 1.5	3.42	1.84			
004-01050	RH	60001-01				PRT-01292		8.81	153	
Stud Pilot, 3/4-16 RH Stud, 16.5 x 7" Drum	16.50	7.56	8.78	10.62	3/4-16 RH	1.35	1.81			
004-01051	LH	60001-01				PRT-01293		8.81	153	
Stud Pilot, 3/4-16 LH Stud, 16.5 x 7" Drum	16.50	7.56	8.78	10.62	3/4-16 LH	1.35	1.81			
004-21043	60000-018				PRT-00117		8.80	149		
Hub Pilot, M22 x 3.97 Stud, 16.5 x 7" Drum Bal	16.50	7.56	8.78	10.56	M22 x 1.5	2.65	1.76			
004-21043L	60000-018				PRT-00118		8.8	151		
Hub Pilot, M22 x 4.82 Stud, 16.5 x 7" Drum Bal	16.50	7.56	8.78	10.56	M22 x 1.5	3.5	1.76			
004-81043	80002-018				PRT-00117		9.11	138		
Hub Pilot, M22 x 3.97 Stud, 16.5 x 7" Trident Drum	16.50	7.56	8.78	10.39	M22 x 1.5	2.87	1.28			
004-81043L	80002-018				PRT-00118		9.11	139		
Hub Pilot, M22 x 3.82 Stud, 16.5 x 7" Trident Drum	16.50	7.56	8.78	10.39	M22 x 1.5	3.72	1.28			

Option "T" - ABS Tone Ring

Part Number PRT-13237
 Description 100-Tooth Tone Ring - Powdered Metal
 Pitch Diameter 6.77

Notes

Fill port option available.



1051 Series Assemblies



Ductile Iron 10 stud hub w/ 8.75" Dia. Bolt Circle. Uses Inboard Drum - Shoulder Stud

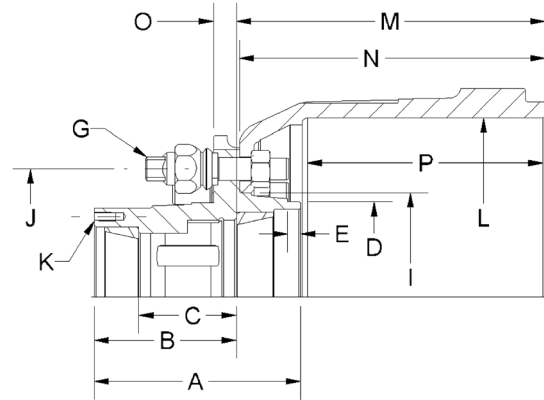
SAE "N" Spindle

Inner Bearing Cup / Cone HM218210 / HM218248

Outer Bearing Cup / Cone HM212011 / HM212049

Hub Specifications

Std. Hub Weight	44 lbs.
A: Hub Overall Length	7.06
B: Inner Cup to Hub Face	4.86
C: Distance Between Cups	3.33
D: Tone Ring Bore Diameter	6.39
E: Tone Ring Bore Depth	0.32
J: Bolt Circle	8.75
K: Bolt Pattern/Thread	6 Holes 5/16"-18 UNC, 5.50 Bolt Circle



Assembly PN	Drum PN				G: Stud PN		M - Cup to Drum	Assy Weight	Drum Image
	L Brake Face Dia	P Brake Face Width	I Hub Pilot	N Overall Depth	Thread	Stud Stand Out	O Cup to Mtg. Flange		
001-10511	RH	53039-01			PRT-00874		10.56	123	
Stud Pilot, 3/4-16 RH 12.25" x 7.5" Drum	12.25	8.13	7.13	10.46	3/4-16 RH	1.33	0.78		
001-10512	LH	53039-01			PRT-00875		10.56	123	
Stud Pilot, 3/4-16 LH 12.25" x 7.5" Drum	12.25	8.13	7.13	10.46	3/4-16 LH	1.33	0.78		

Option "T" - ABS Tone Ring

Part Number	PRT-10981
Description	80-Tooth Tone Ring
Pitch Diameter	6.77

Notes

Uses PRT-00152 Locknut





130 Series Assemblies

Ductile Iron 10 stud hub w/ 11.25" Dia. Bolt Circle. Uses Outboard drum - Serrated stud

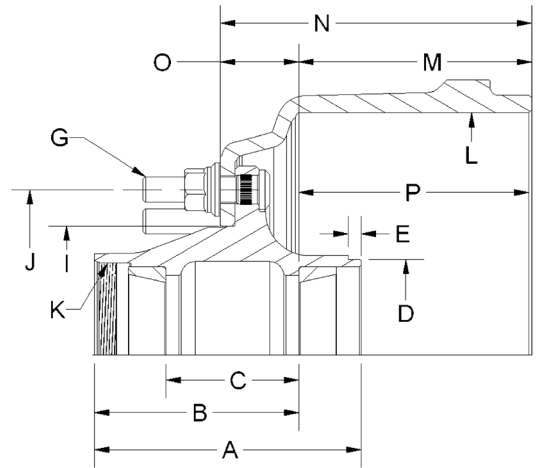
SAE "P" Spindle

Inner Bearing Cup / Cone HM518410 / HM518445

Outer Bearing Cup / Cone HM518410 / HM518445

Hub Specifications

Std. Hub Weight	61 lbs.
A: Hub Overall Length	9.06
B: Inner Cup to Hub Face	6.94
C: Distance Between Cups	4.50
D: Tone Ring Bore Diameter	6.50
E: Tone Ring Bore Depth	0.51
J: Bolt Circle	11.25
K: Bolt Pattern/Thread	6 1/4"-8 UNC 2B Threaded



Assembly PN	Drum PN				G: Stud PN		M - Cup to Drum	Assy Weight	Drum Image
	L Brake Face Dia	P Brake Face Width	I Hub Pilot	N Overall Depth	Thread	Stud Stand Out	O Cup to Mtg. Flange		
004-00130									
Hub Pilot, M22 x 3.97 Stud, 16.5 x 7" Drum	16.50	7.56	8.78	10.62	M22 x 1.5	2.63	1.82	170	
004-00130L									
Hub Pilot, M22 x 4.82 Stud, 16.5 x 7" Drum	16.50	7.56	8.78	10.62	M22 x 1.5	3.48	1.82	171	
004-00131	RH								
Stud Pilot, 3/4-16 RH Stud, 16.5 x 7" Drum	16.50	7.56	8.78	10.62	3/4-16 RH	1.39	1.82	167	
004-00132	LH								
Stud Pilot, 3/4-16 LH Stud, 16.5 x 7" Drum	16.50	7.56	8.78	10.62	3/4-16 LH	1.39	1.82	167	

Option "T" - ABS Tone Ring

Part Number	PRT-13237
Description	100-Tooth Tone Ring - Powdered Metal
Pitch Diameter	6.77



137 Series Assemblies



Ductile Iron 10 stud hub w/ 11.25" Dia. Bolt Circle. Uses Outboard Drum - Serrated stud

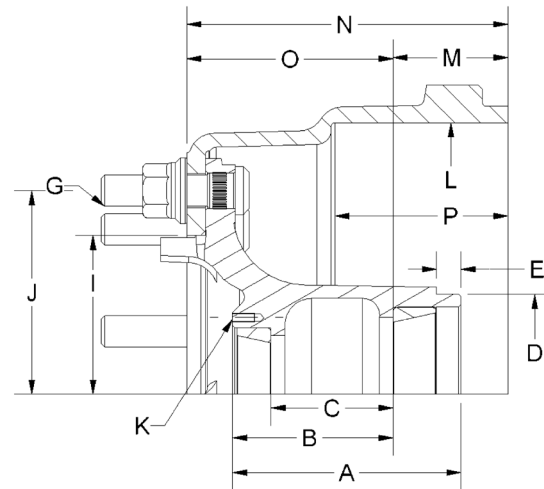
SAE "FF/FG" Spindle

Inner Bearing Cup / Cone HM212011 / HM212049

Outer Bearing Cup / Cone 3720 / 3782

Hub Specifications

Std. Hub Weight	47 lbs.
A: Hub Overall Length	6.28
B: Inner Cup to Hub Face	4.44
C: Distance Between Cups	3.38
D: Tone Ring Bore Diameter	5.52
E: Tone Ring Bore Depth	0.67
J: Bolt Circle	11.25
K: Bolt Pattern/Thread	6 holes 5/16"-18 UNC. 4.50 Bolt Circle



Assembly PN	Drum PN				G: Stud PN		M - Cup to Drum	Assy Weight	Drum Image
	L Brake Face Dia	P Brake Face Width	I Hub Pilot	N Overall Depth	Thread	Stud Stand Out	O Cup to Mtg.Flange		
002-00137									
Hub Pilot, M22 x 3.70 Stud, 15 x 4" Drum Bal	15.00	4.77	8.78	8.86	M22 x 1.5	2.39	5.69	119	
002-00137L									
Hub Pilot, M22 x 3.97 Stud, 15 x 4" Drum Bal	15.00	4.77	8.78	8.86	M22 x 1.5	2.63	5.69	120	
002-00138	RH								
Stud Pilot, 3/4-16 RH Stud, 15 x 4" Drum Bal	15.00	4.77	8.78	8.86	3/4-16 RH	1.79	5.69	117	
002-00139	LH								
Stud Pilot, 3/4-16 LH Stud, 15 x 4" Drum Bal	15.00	4.77	8.78	8.86	3/4-16 LH	1.79	5.69	117	
002-00142									
Hub Pilot, M22 x 3.70 Stud, 16.5 x 5" Drum Bal	16.50	5.38	8.78	9.04	M22 x 1.5	2.41	5.67	132	
002-00142L									
Hub Pilot, M22 x 3.97 Stud, 16.5 x 5" Drum Bal	16.50	5.38	8.78	9.04	M22 x 1.5	2.65	5.67	133	
002-00144									
Hub Pilot, M22 x 3.70 Stud, 15 x 5" Drum Bal	15.00	6.26	8.78	9.47	M22 x 1.5	2.4	5.68	123	
002-00144L									
Hub Pilot, M22 x 3.97 Stud, 15 x 5" Drum Bal	15.00	6.26	8.78	9.47	M22 x 1.5	2.64	5.68	124	

Option "T" - ABS Tone Ring

Part Number	PRT-10925
Description	100-Tooth Tone Ring
Pitch Diameter	6.46



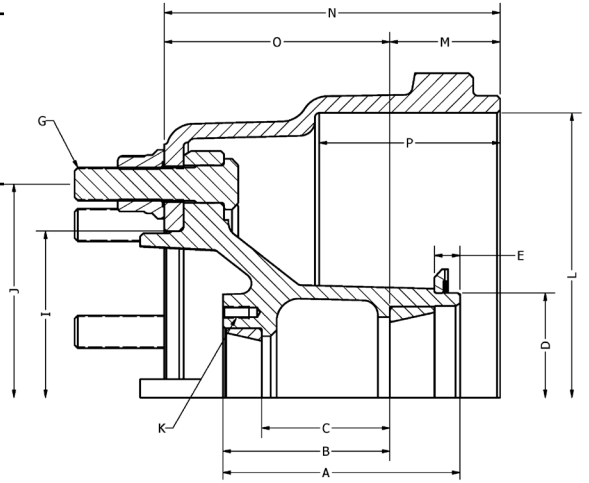
Ductile Iron 10 stud hub w/ 11.25" Dia. Bolt Circle. Uses Outboard Drum - Serrated stud

SAE "FF/FG" Spindle

Inner Bearing Cup / Cone HM212011 / HM212049
 Outer Bearing Cup / Cone 3720 / 3782

Hub Specifications

Std. Hub Weight 41 lbs.
 A: Hub Overall Length 6.25
 B: Inner Cup to Hub Face 4.40
 C: Distance Between Cups 3.38
 D: Tone Ring Bore Diameter 5.52
 E: Tone Ring Bore Depth 0.67
 J: Bolt Circle 11.25
 K: Bolt Pattern/Thread 6 holes 5/16"-18 UNC.
 4.50 Bolt Circle



Assembly PN	Drum PN				G: Stud PN		M - Cup to Drum	Assy Weight	Drum Image
	L Brake Face Dia	P Brake Face Width	I Hub Pilot	N Overall Depth	Thread	Stud Stand Out	O Cup to Mtg.Flange		
002-00200	54224-018				PRT-00117		2.91	112	
Hub Pilot, M22 x 3.73 Stud, 15 x 4" Drum Bal	15.00	4.77	8.78	8.86	M22 x 1.5	2.40	5.95		
002-00200L	54224-018				PRT-00122		2.91	113	
Hub Pilot, M22 x 3.97 Stud, 15 x 4" Drum Bal	15.00	4.77	8.78	8.86	M22 x 1.5	2.68	5.95		

Option "T" - ABS Tone Ring

Part Number PRT-10925
 Description 100-Tooth Tone Ring
 Pitch Diameter 6.46

Notes

002-0200 series for 5.44" brake offset applications



2133 Series Assemblies



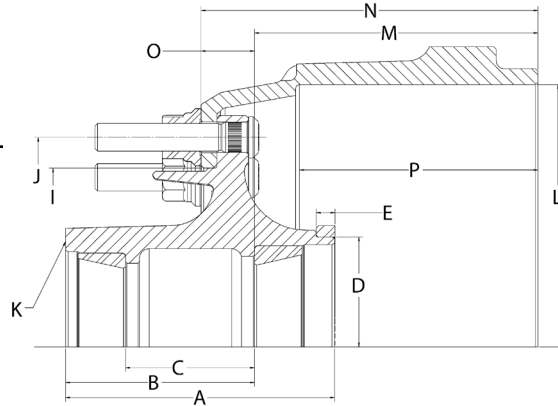
Ductile Iron 10 stud hub w/ 335mm Dia. Bolt Circle. Uses Outboard Drum - Serrated stud

SAE "K30" Spindle

Inner Bearing Cup / Cone 752 / 759
Outer Bearing Cup / Cone 742 / 740

Hub Specifications

Std. Hub Weight 79 lbs.
A: Hub Overall Length 8.46
B: Inner Cup to Hub Face 5.94
C: Distance Between Cups 4.06
D: Tone Ring Bore Diameter 6.92
E: Tone Ring Bore Depth 0.58
J: Bolt Circle 13.19
K: Bolt Pattern/Thread 6 Holes 5/16"-18 UNC.,
6.75 Bolt Circle



Assembly PN	Drum PN				G: Stud PN		M - Cup to Drum	Assy Weight	Drum Image
	L Brake Face Dia	P Brake Face Width	I Hub Pilot	N Overall Depth	Thread	Stud Stand Out	O Cup to Mtg. Flange		
006-02133							10.64	218	
Hub Pilot, M22 x 3.97 Stud, 16.5 x 8-5/8" Drum	16.50	9.14	11.25	12.37	M22 x 1.5	2.43	1.73		
006-02133L							10.64	219	
Hub Pilot, M22 x 4.82 Stud, 16.5 x 8-5/8" Drum	16.50	9.14	11.25	12.37	M22 x 1.5	3.28	1.73		
006-02135							8.92	196	
Hub Pilot, M22 x 3.97 Stud, 16.5 x 7" Drum	16.50	7.50	11.25	10.60	M22 x 1.5	2.49	1.68		
006-02135L							8.92	197	
Hub Pilot, M22 x 4.82 Stud, 16.5 x 7" Drum	16.50	7.50	11.25	10.60	M22 x 1.5	3.34	1.68		

Option "T" - ABS Tone Ring

Part Number PRT-13301
Description 100-Tooth Tone Ring
Pitch Diameter 7.28

Notes

Fill port option available.





2134 Series Assemblies

Ductile Iron 10 stud hub w/ 11.25" Dia. Bolt Circle. Uses Outboard Drum - Serrated stud

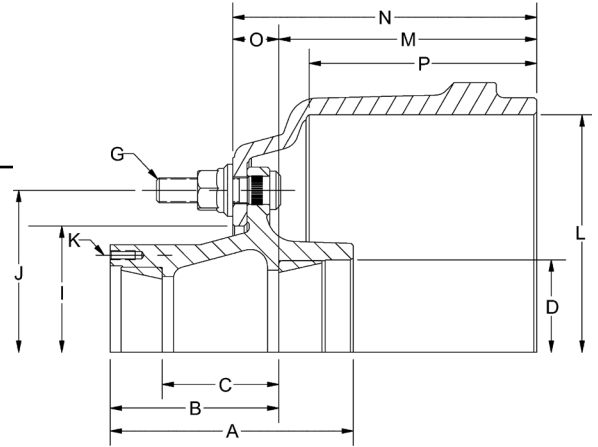
SAE "K30" Spindle

Inner Bearing Cup / Cone 752 / 759

Outer Bearing Cup / Cone 742 / 740

Hub Specifications

Std. Hub Weight 58 lbs.
 A: Hub Overall Length 8.39
 B: Inner Cup to Hub Face 5.87
 C: Distance Between Cups 4.06
 D: Tone Ring Bore Diameter 6.92
 E: Tone Ring Bore Depth 0.58
 J: Bolt Circle 11.25
 K: Bolt Pattern/Thread 6 Holes 5/16"-18 UNC.,
 6.75 Bolt Circle



Assembly PN	Drum PN				G: Stud PN		M - Cup to Drum	Assy Weight	Drum Image
	L Brake Face Dia	P Brake Face Width	I Hub Pilot	N Overall Depth	Thread	Stud Stand Out	O Cup to Mtg. Flange		
006-02134									
Hub Pilot, M22 x 3.97 Stud, 16.5 x 7" Drum Bal	16.50	7.60	8.78	10.59	M22 x 1.5	2.67	1.61	184	
006-02134L									
Hub Pilot, M22 x 4.82" Stud, 16.5 x 7" Drum Bal	16.50	7.60	8.78	10.59	M22 x 1.5	3.52	1.61	186	
006-02136	RH								
Stud Pilot, 3/4-16 RH Stud, 16.5 x 7" Drum Bal	16.50	7.60	8.78	10.59	3/4-16 RH	1.42	1.61	181	
006-02137	LH								
Stud Pilot, 3/4-16 LH Stud, 16.5 x 7" Drum Bal	16.50	7.60	8.78	10.59	3/4-16 LH	1.42	1.61	181	
006-02138									
Hub Pilot, M22 x 3.97 Stud, 16.5 x 8-5/8" Drum Bal	16.50	9.06	8.78	11.46	M22 x 1.5	2.57	1.71	176	
006-02138L									
Hub Pilot, M22 x 4.82" Stud, 16.5 x 8-5/8" Drum Bal	16.50	9.06	8.78	11.46	M22 x 1.5	3.42	1.71	177	

Option "T" - ABS Tone Ring

Part Number PRT-13301
 Description 100-Tooth Tone Ring
 Pitch Diameter 7.28

Notes

Fill port option available.



237 Series Assemblies



Ductile Iron 10 stud hub w/ 11.25" Dia. Bolt Circle. Uses Outboard Drum - Serrated stud

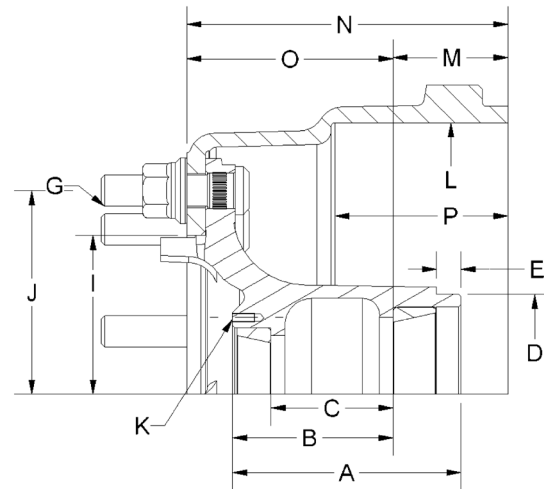
SAE "FF/FG" Spindle

Inner Bearing Cup / Cone HM212011 / HM212049

Outer Bearing Cup / Cone 3720 / 3782

Hub Specifications

Std. Hub Weight	40 lbs.
A: Hub Overall Length	6.28
B: Inner Cup to Hub Face	4.44
C: Distance Between Cups	3.38
D: Tone Ring Bore Diameter	5.52
E: Tone Ring Bore Depth	0.66
J: Bolt Circle	11.25
K: Bolt Pattern/Thread	6 Holes 5/16"-18 UNC., 4.50 Bolt Circle



Assembly PN	Drum PN				G: Stud PN		M - Cup to Drum	Assy Weight	Drum Image
	L Brake Face Dia	P Brake Face Width	I Hub Pilot	N Overall Depth	Thread	Stud Stand Out	O Cup to Mtg. Flange		
002-00237	54224-018				PRT-00121		3.29	111	
Hub Pilot, M22 x 3.73 Stud, 15 x 4" Drum Bal	15.00	4.77	8.78	8.86	M22 x 1.5	2.42	5.57		
002-00237L	54224-018				PRT-00117		3.29	112	
Hub Pilot, M22 x 3.97 Stud, 15 x 4" Drum Bal	15.00	4.77	8.78	8.86	M22 x 1.5	2.66	5.57		

Option "T" - ABS Tone Ring

Part Number	PRT-10925
Description	100-Tooth Tone Ring
Pitch Diameter	6.46





2540 Series Assemblies

Ductile Iron 10 stud hub w/ 11.25" Dia. Bolt Circle. Uses Outboard Drum - Serrated stud

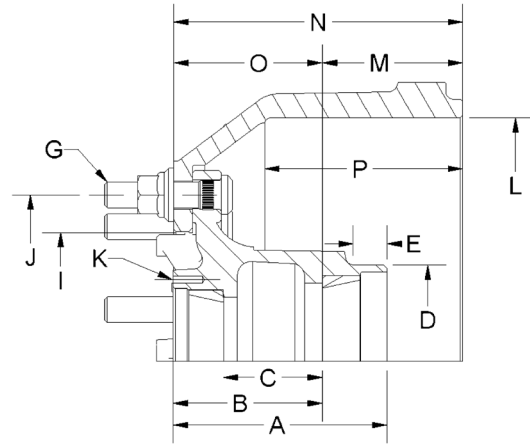
SAE "N" Spindle

Inner Bearing Cup / Cone HM218210 / HM218248

Outer Bearing Cup / Cone HM212011 / HM212049

Hub Specifications

Std. Hub Weight	51 lbs.
A: Hub Overall Length	7.22
B: Inner Cup to Hub Face	5.04
C: Distance Between Cups	3.35
D: Tone Ring Bore Diameter	6.50
E: Tone Ring Bore Depth	0.437
J: Bolt Circle	11.25
K: Bolt Pattern/Thread	6 Holes 5/16"-18 UNC, 5.50 Bolt Circle



Assembly PN	Drum PN				G: Stud PN		M - Cup to Drum	Assy Weight	Drum Image
	L Brake Face Dia	P Brake Face Width	I Hub Pilot	N Overall Depth	Thread	Stud Stand Out	O Cup to Mtg. Flange		
001-02540	54242-018				PRT-00121		4.74	181	
Hub Pilot, M22 x 3.73 Stud, 16.5 x 6" Drum Bal	16.50	6.46	8.78	9.76	M22 x 1.5	2.13	5.02		
001-02540L	54242-018				PRT-00117		4.74	182	
Hub Pilot, M22 x 3.97 Stud, 16.5 x 6" Drum Bal	16.50	6.46	8.78	9.76	M22 x 1.5	2.37	5.02		
001-02540X	54242-018				PRT-00122		4.74	182	
Hub Pilot, M22 x 4.25 Stud, 16.5 x 6" Drum Bal	16.50	6.46	8.78	9.76	M22 x 1.5	2.65	5.02		
001-02545	54238-018				PRT-00121		4.14	140	
Hub Pilot, M22 x 3.73 Stud, 16.5 x 5" Drum Bal	16.50	5.38	8.78	9.04	M22 x 1.5	2.27	4.9		
001-02545L	54238-018				PRT-00117		4.14	141	
Hub Pilot, M22 x 3.97 Stud, 16.5 x 5" Drum Bal	16.50	5.38	8.78	9.04	M22 x 1.5	2.51	4.9		
001-02546	54295-018				PRT-00121		4.96	136	
Hub Pilot, M22 x 3.70 Stud, 15 x 6" Drum Bal	15.00	6.64	8.78	9.85	M22 x 1.5	2.26	4.89		
001-02546L	54295-018				PRT-00117		4.96	136	
Hub Pilot, M22 x 3.97 Stud, 15 x 6" Drum Bal	15.00	6.64	8.78	9.85	M22 x 1.5	2.5	4.89		
001-02546X	54295-018				PRT-00122		4.96	137	
Hub Pilot, M22 x 4.25 Stud, 15 x 6" Drum Bal	15.00	6.64	8.78	9.85	M22 x 1.5	2.78	4.89		
001-02547	60001-018				PRT-00121		5.70	165	
Hub Pilot, M22 x 3.70 Stud, 16.5 x 7" Drum Bal	16.50	7.56	8.78	10.62	M22 x 1.5	2.23	4.92		
001-02547L	60001-018				PRT-00117		5.70	165	
Hub Pilot, M22 x 3.97 Stud, 16.5 x 7" Drum Bal	16.50	7.56	8.78	10.62	M22 x 1.5	2.47	4.92		

Option "T" - ABS Tone Ring

Part Number	PRT-13237
Description	100-Tooth Tone Ring - Powdered Metal
Pitch Diameter	6.77



4000 Series Assemblies



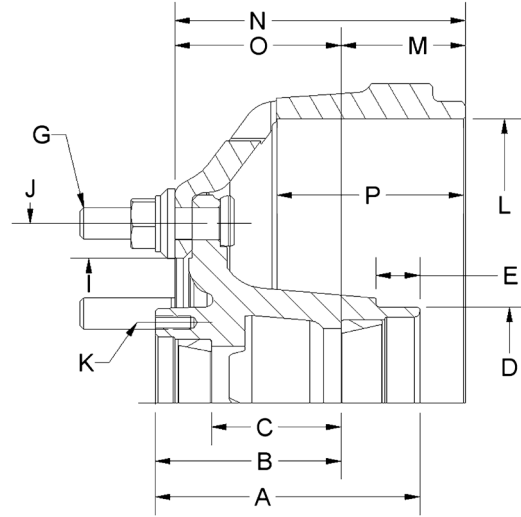
Ductile Iron 6 stud hub w/ 8.07" Dia Bolt Circle. Uses Outboard Drum - Clipped Head Stud


SAE "I80 (FC)" Spindle

Inner Bearing Cup / Cone JM207010 / JM207049A
 Outer Bearing Cup / Cone 25820 / 25877

Hub Specifications

Std. Hub Weight 25 lbs.
 A: Hub Overall Length 5.94
 B: Inner Cup to Hub Face 4.17
 C: Distance Between Cups 2.91
 D: Tone Ring Bore Diameter 4.32
 E: Tone Ring Bore Depth 0.98
 J: Bolt Circle 205 mm (8.07")
 K: Bolt Pattern/Thread 4 Holes 5/16"-18 UNC,
 3.63 Bolt Circle



Assembly PN	Drum PN				G: Stud PN		M - Cup to Drum	Assy Weight	Drum Image
	L Brake Face Dia	P Brake Face Width	I Hub Pilot	N Overall Depth	Thread	Stud Stand Out	O Cup to Mtg. Flange		
011-04000L	54256-018				PRT-01296		2.8	70	
Hub Pilot M18 x 3.15 Stud, 12.80 x 4" Drum Bal	12.80	4.25	6.52	6.54	M18 x 1.5	2.13	3.74		

Option "T" - ABS Tone Ring

Part Number PRT-10982
 Description 100-Tooth Tone Ring
 Pitch Diameter 6.25

Notes

KIC recommends 250-300 ft. lbs. torque range on the M18 studs for the 011-04000
 Uses PRT-00116 Flange Nut





40110 Series Assemblies

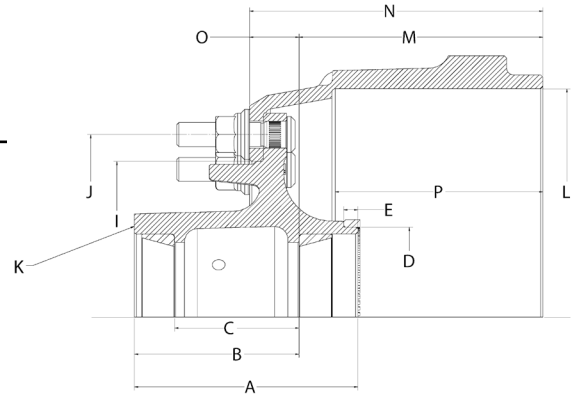
Ductile Iron 10 stud hub w/ 335mm Dia. Bolt Circle. Uses Outboard Drum - Serrated stud

SAE "P" Spindle

Inner Bearing Cup / Cone HM518410 / HM518445
 Outer Bearing Cup / Cone HM518410 / HM518445

Hub Specifications

Std. Hub Weight 68 lbs.
 A: Hub Overall Length 8.07
 B: Inner Cup to Hub Face 5.95
 C: Distance Between Cups 4.50
 D: Tone Ring Bore Diameter 6.50
 E: Tone Ring Bore Depth 0.51
 J: Bolt Circle 335mm (13.19")
 K: Bolt Pattern/Thread 6 Holes M8 x 1.25
 UNC, 6.75 Bolt Circle



Assembly PN	Drum PN				G: Stud PN		M - Cup to Drum	Assy Weight	Drum Image
	L Brake Face Dia	P Brake Face Width	I Hub Pilot	N Overall Depth	Thread	Stud Stand Out	O Cup to Mtg.Flange		
004-40110							8.81	178	
Hub Pilot, M22 x 3.97 Stud, 16.5 x 7" Drum	16.50	7.50	11.25	10.60	M22 x 1.5	2.63	1.79		
004-40110L							8.81	180	
Hub Pilot, M22 x 4.82 Stud, 16.5 x 7" Drum	16.50	7.50	11.25	10.60	M22 x 1.5	3.48	1.79		

Option "T" - ABS Tone Ring

Part Number PRT-13237
 Description 100-Tooth Tone Ring - Powdered Metal
 Pitch Diameter 6.77

Notes

Fill port option available.



40310 Series Assemblies



Ductile Iron 10 stud hub w/ 335mm Dia. Bolt Circle. Uses Outboard Drum - Serrated stud

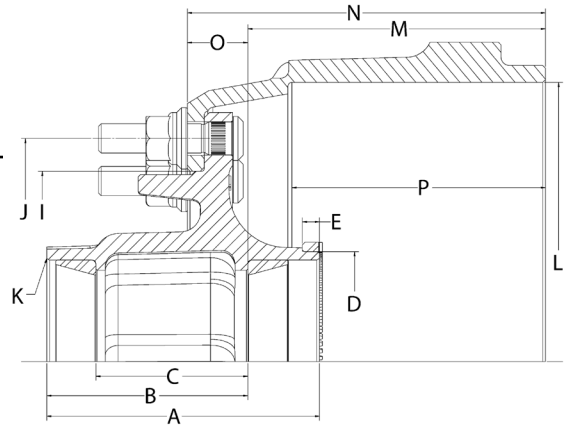
SAE "P" Spindle

Inner Bearing Cup / Cone HM518410 / HM518445

Outer Bearing Cup / Cone HM518410 / HM518445

Hub Specifications

Std. Hub Weight	59 lbs.
A: Hub Overall Length	8.07
B: Inner Cup to Hub Face	5.95
C: Distance Between Cups	4.50
D: Tone Ring Bore Diameter	6.39
E: Tone Ring Bore Depth	0.51
J: Bolt Circle	335mm (13.19")
K: Bolt Pattern/Thread	6 Holes M8 x 1.25 UNC, 6.75 Bolt Circle



Assembly PN	Drum PN				G: Stud PN		M - Cup to Drum	Assy Weight	Drum Image
	L Brake Face Dia	P Brake Face Width	I Hub Pilot	N Overall Depth	Thread	Stud Stand Out	O Cup to Mtg.Flange		
004-40310							8.81	178	
Hub Pilot, M22 x 3.97 Stud, 16.5 x 7" Drum	16.50	7.50	11.25	10.60	M22 x 1.5	2.63	1.79		
004-40310L							8.81	179	
Hub Pilot, M22 x 4.82 Stud, 16.5 x 7" Drum	16.50	7.50	11.25	10.60	M22 x 1.5	3.48	1.79		

Option "T" - ABS Tone Ring

Part Number	PRT-13237
Description	100-Tooth Tone Ring - Powdered Metal
Pitch Diameter	6.77

Notes

Fill port option available.



Ductile Iron 8-stud hub w/ 275mm Dia. Bolt Circle. Uses Outboard drum - Serrated stud

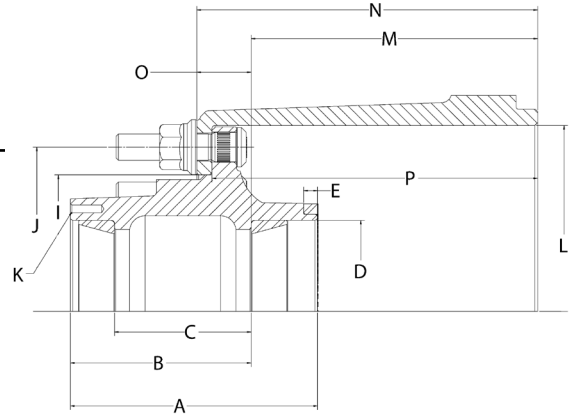
SAE "P" Spindle

Inner Bearing Cup / Cone HM518410 / HM518445

Outer Bearing Cup / Cone HM518410 / HM518445

Hub Specifications

Std. Hub Weight	52 lbs.
A: Hub Overall Length	8.13
B: Inner Cup to Hub Face	5.95
C: Distance Between Cups	4.50
D: Tone Ring Bore Diameter	6.39
E: Tone Ring Bore Depth	.45
J: Bolt Circle	275mm (10.83")
K: Bolt Pattern/Thread	6 Holes 5/16"-18 UNC, 6.75 Bolt Circle



Assembly PN	Drum PN				G: Stud PN		M - Cup to Drum	Assy Weight	Drum Image
	L Brake Face Dia	P Brake Face Width	I Hub Pilot	N Overall Depth	Thread	Stud Stand Out	O Cup to Mtg.Flange		
004-41045			54244-01			PRT-00117	9.43	138	
Hub Pilot, M22 x 3.97 Stud, 12.25 x 7.5" Drum	12.25	10.62	9.00	11.22	M22 x 1.5	2.66	1.79		
004-41045L			54244-01			PRT-00118	9.43	140	
Hub Pilot, M22 x 4.82 Stud, 12.25 x 7.5" Drum	12.25	10.62	9.00	11.22	M22 x 1.5	3.51	1.79		

Option "T" - ABS Tone Ring

Part Number	PRT-10981
Description	80-Tooth Tone Ring
Pitch Diameter	6.77



47001 Series Assemblies



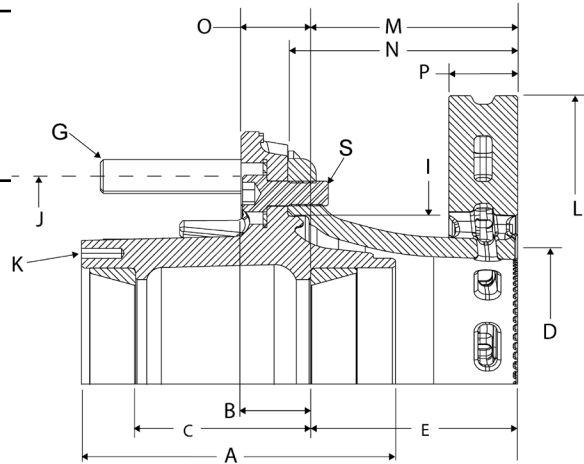
Ductile Iron 10 stud ADB hub w/ 11.25" Dia. Bolt Circle. Uses PAN22 Rotor - Serrated stud

SAE "P" Spindle

Inner Bearing Cup / Cone HM518410 / HM518445
 Outer Bearing Cup / Cone HM518410 / HM518445

Hub Specifications

Std. Hub Weight 54 lbs.
 A: Hub Overall Length 8.07
 B: Inner Cup to Hub Face 5.89
 C: Distance Between Cups 4.5
 J: Bolt Circle 285.75mm (11.25")
 K: Bolt Pattern 6 Holes 5/16"-18 UNC, 6.75 Bolt Circle



Assembly PN	Rotor PN				G - Stud PN		M - Cup to Rotor	Assy Weight	Rotor Image
	L Rotor Dia	P Disc Thickness	I Hub Pilot	N Overall Depth	Thread	Stud Stand Out	O Cup to Mtg. Flange		
	D Tone Ring Pitch Dia.	E Inner Cup To ABS	S - Screws & Washers						
004-1HTR47001F Hub/Rotor ASSY, TP ADB Hub w/fill port-11.25" BC, M22x3.97" PAN22 Rotor	16.93 7.25 Ref.	1.76 5.31	8.659	5.90	PRT-00117 M22 x 1.5	2.77	5.31 1.79	131	
004-1HTR47001FL Hub/Rotor ASSY, TP ADB Hub w/fill port-11/25" BC, M22x4.82" PAN22 Rotor	16.93 7.25 Ref.	1.76 5.31	8.659	5.90	PRT-00118 M22 x 1.5	3.62	5.31 1.79	131	
R19-47001F Hub/Rotor ASSY, TP ADB Hub w/fill port-11.25" BC, M22x3.97" PAN19 Rotor	14.84 7.25 Ref.	1.77 5.32	8.659	5.91	PRT-00117 M22 x 1.5	2.77	5.32 1.79	120	
R19-47001FL Hub/Rotor ASSY, TP ADB Hub w/fill port-11/25" BC, M22x4.82" PAN19 Rotor	14.84 7.25 Ref.	1.77 5.32	8.659	5.91	PRT-00118 M22 x 1.5	3.62	5.32 1.79	122	

Notes

Fill Port Plug PRT-01300 installed





51005 Series Assemblies

Ductile Iron 10 stud hub w/ 11.25" Dia. Bolt Circle. Uses Outboard Drum - Serrated stud

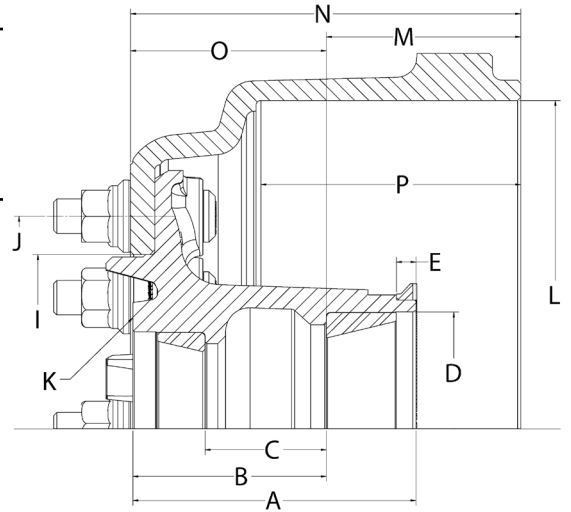
SAE "FL" Spindle

Inner Bearing Cup / Cone 6420 / 6461A

Outer Bearing Cup / Cone 552A / 555S

Hub Specifications

Std. Hub Weight 61 lbs.
 A: Hub Overall Length 7.08
 B: Inner Cup to Hub Face 4.29
 C: Distance Between Cups 3.03
 D: Tone Ring Bore Diameter 6.50
 E: Tone Ring Bore Depth 0.49
 J: Bolt Circle 11.25
 K: Bolt Pattern/Thread 6 Holes 5/16"-18 UNC,
 5.50 Bolt Circle



Assembly PN	Drum PN				G: Stud PN		M - Cup to Drum	Assy Weight	Drum Image
	L Brake Face Dia	P Brake Face Width	I Hub Pilot	N Overall Depth	Thread	Stud Stand Out	O Cup to Mtg.Flange		
005-51005L									
Hub Pilot, M22 x 4.25 Stud, 16.5 x 6" Drum Bal	16.50	6.50	8.78	9.76	M22 x 1.5	2.44	4.90	169	
005-51005X									
Hub Pilot, M22 x 4.82 Stud, 16.5 x 6" Drum Bal	16.50	6.50	8.78	9.76	M22 x 1.5	3.01	4.90	170	

Option "T" - ABS Tone Ring

Part Number PRT-10935
 Description 100-Tooth Tone Ring
 Pitch Diameter 6.91



75000 Series Assemblies



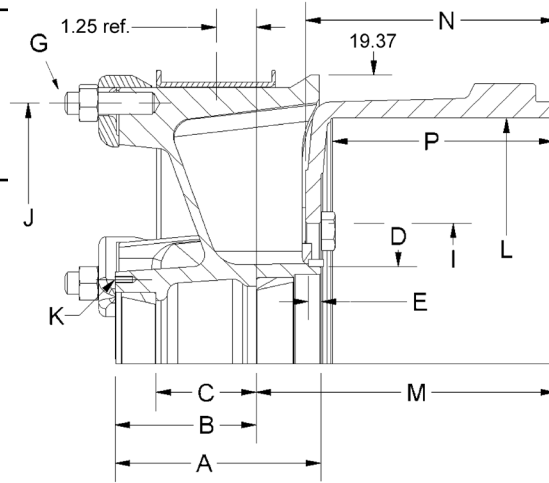
Ductile Iron 5-spoke 20"

SAE "N" Spindle

Inner Bearing Cup / Cone HM218210 / HM218248
 Outer Bearing Cup / Cone HM212011 / HM212049

Hub Specifications

Std. Hub Weight 66 lbs.
 A: Hub Overall Length 6.93
 B: Inner Cup to Hub Face 4.74
 C: Distance Between Cups 3.35
 D: Tone Ring Bore Diameter 6.50
 E: Tone Ring Bore Depth 0.44
 J: Rim Clamp Stud Bolt Circle 17.5
 K: Bolt Pattern/Thread 6 Holes 5/16"-18 UNC,
 5.50 Bolt Circle



Assembly PN	Drum PN				G: Rim Stud PN		M - Cup to Drum	Assy Weight	Drum Image
	L Brake Face Dia	P Brake Face Width	I Hub Pilot	N Overall Depth	Thread	Stud Stand Out	O Cup to Mtg. Flange		
001-75000	52230-10				PRT-00114		9.90	171	
5-Spoke x 20" 16.5 x 7" Brake Drum	16.50	7.44	9.44	8.39	3/4-10	1.99 ref.	N/A		

Option "T" - ABS Tone Ring

Part Number PRT-13237
 Description 100-Tooth Tone Ring - Powdered Metal
 Pitch Diameter 6.77

Notes

Uses PRT-04020 or Accuride 4020KSB 20 x 4" Spacer Band
 Uses 5 ea. PRT-00075 Rim Nuts
 Uses 5 ea. PRT-00123 Rim Clamps
 Uses 5 ea. PRT-00152 Lock Nut
 Uses 5 ea. PRT-00151 Drum Bolt





9442 Series Assemblies

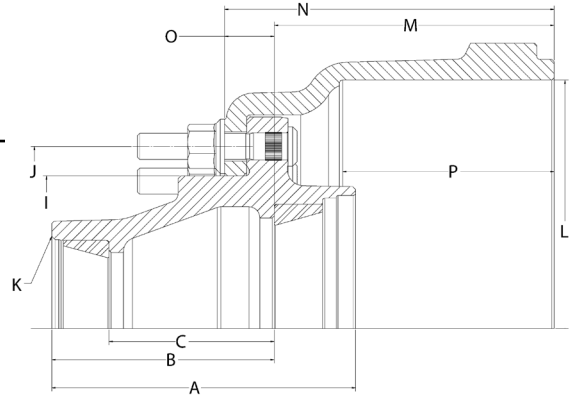
Ductile Iron 10 stud hub w/ 335mm Dia. Bolt Circle. Uses Outboard Drum - Serrated stud


SAE "A65" Spindle

Inner Bearing Cup / Cone	892 / 896
Outer Bearing Cup / Cone	6535 / 6580

Hub Specifications

Std. Hub Weight	122 lbs.
A: Hub Overall Length	11.03
B: Inner Cup to Hub Face	8.08
C: Distance Between Cups	6.00
D: Tone Ring Bore Diameter	N/A
E: Tone Ring Bore Depth	N/A
J: Bolt Circle	335mm (13.19")
K: Bolt Pattern/Thread	6 Holes 1/4"-20 UNC, 7.25 Bolt Circle



Assembly PN	Drum PN				G: Stud PN		M - Cup to Drum	Assy Weight	Drum Image
	L Brake Face Dia	P Brake Face Width	I Hub Pilot	N Overall Depth	Thread	Stud Stand Out	O Cup to Mtg.Flange		
014-09442	54304-01				PRT-04565		10.15	297	
Hub Pilot M24 x 5.47 Stud, 18 x 7" Drum	18.00	7.67	11.25	11.95	M24 x 1.5	3.17	1.80		

Notes

Uses PRT-00110 1.5 x M24 Flange Nut



9518 Series Assemblies



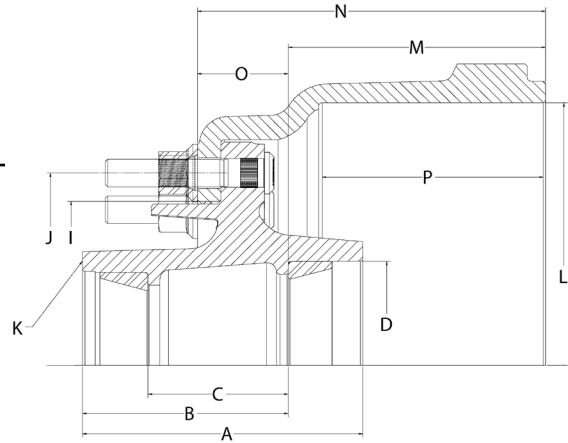
Ductile Iron 10 stud hub w/ 335mm Dia. Bolt Circle. Uses Outboard Drum - Serrated stud


SAE "W (A45)" Spindle

Inner Bearing Cup / Cone 772 / 787
 Outer Bearing Cup / Cone 6535 / 6580

Hub Specifications

Std. Hub Weight 110 lbs.
 A: Hub Overall Length 9.62
 B: Inner Cup to Hub Face 7.06
 C: Distance Between Cups 4.81
 D: Tone Ring Bore Diameter N/A
 E: Tone Ring Bore Depth N/A
 J: Bolt Circle 335mm (13.19")
 K: Bolt Pattern/Thread 6 Holes 1/4"-20 UNC,
 7.25 Bolt Circle

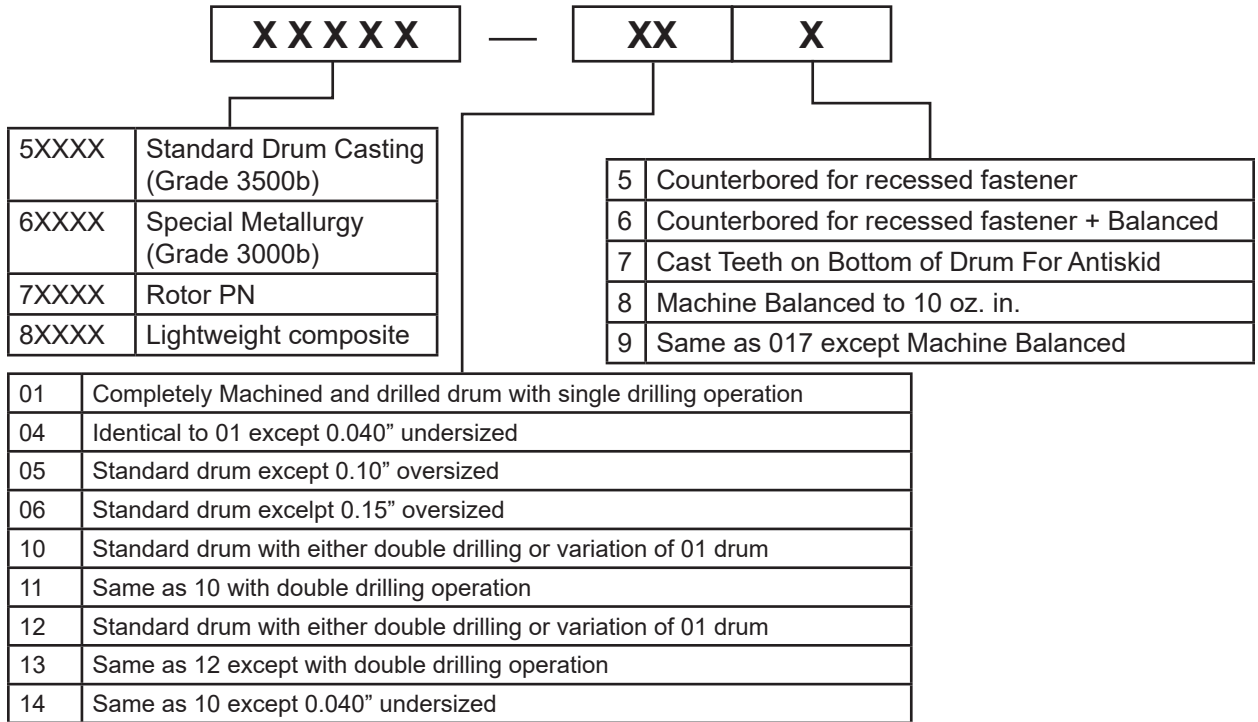


Assembly PN	Drum PN				G: Stud PN		M - Cup to Drum	Assy Weight	Drum Image
	L Brake Face Dia	P Brake Face Width	I Hub Pilot	N Overall Depth	Thread	Stud Stand Out	O Cup to Mtg. Flange		
007-09518							8.84	285	
Hub Pilot M24 x 5.47 Stud, 18 x 7" Drum	18.00	7.67	11.25	11.95	M24 x 1.5	3.17	3.12		

Notes

Uses PRT-00110 1.5 x M24 Flange Nut

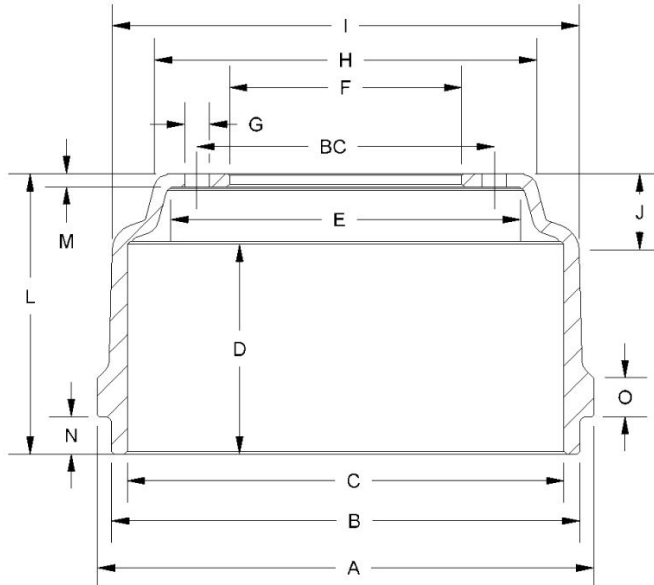




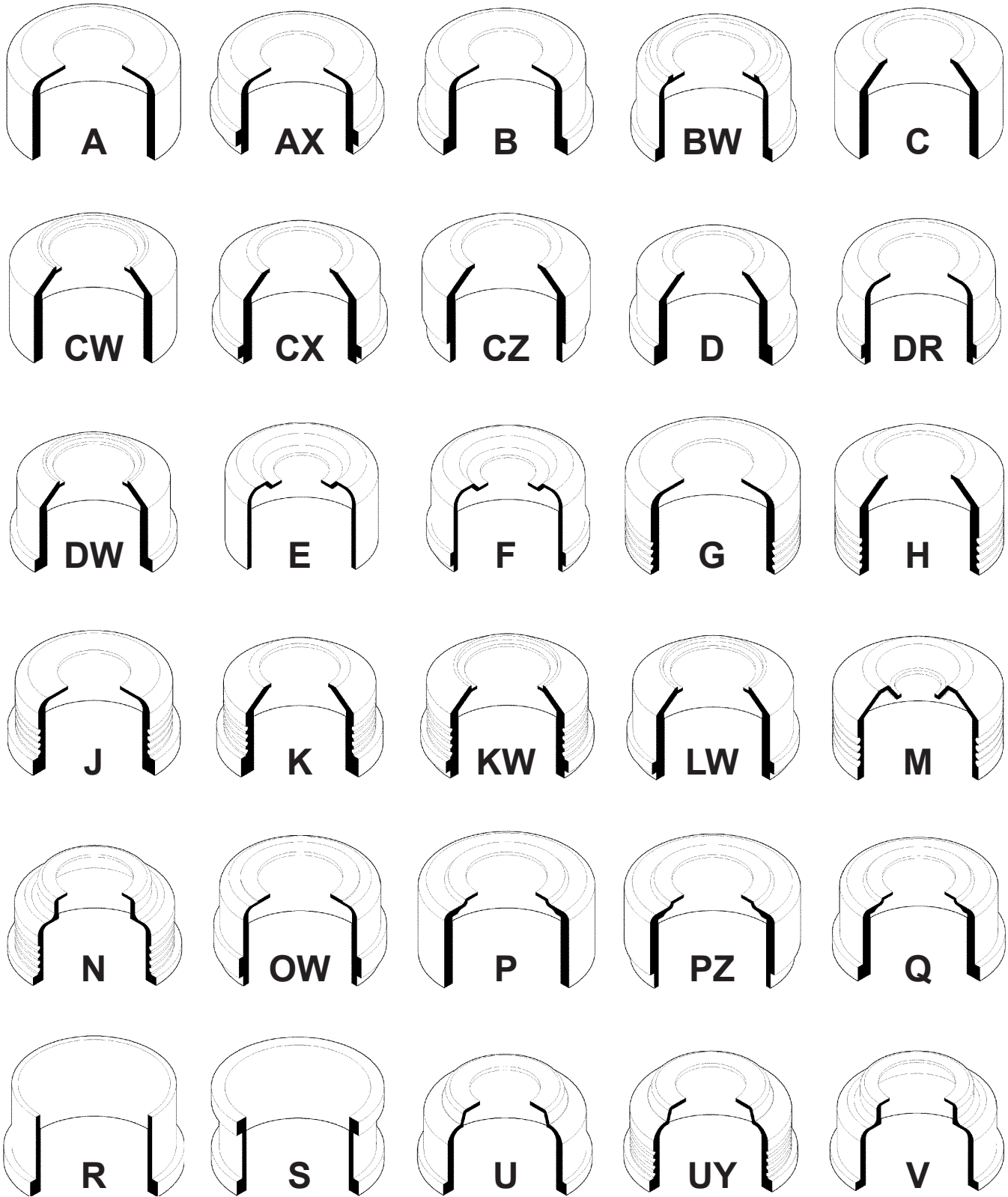
EXAMPLE:

60001-01: 60001 Casting, completely machined and drilled with single drilling operation
 60001-018: Same as 60001-01 except machine balanced to 10 oz. in.

Brake Drum Nomenclature



- | | | | |
|-----------|---------------------------------------|------------|------------------------------------|
| A. | Overall Diameter | I. | Diameter at Taper |
| B. | Dust Shield Recess Diameter | J. | Distance of Face to Taper |
| C. | Brake Face Diameter | BC. | Bolt Circle Diameter |
| D. | Brake Face Width | L. | Overall Height |
| E. | Inside Finished Diameter | M. | Flange Thickness |
| F. | Hub Pilot Diameter | N. | Depth of Dust Shield Recess |
| G. | Bolt Hole Diameter, Number | O. | Squealer Band Thickness |
| H. | Diameter to Beginning of Taper | | |



The combination of a suffix with any of the above types indicates the same type with:

V = Vertical Ribs

D = Dust Shield Recess

F = Fins



Brake Drum Dimensional Data (By PN)

Drum PN	Type	Weight	Brake Face Dia	Brake Face Width	Overall Depth	Hub Pilot	Bolt Hole Circle	Bolt Holes		Special Info
								No.	Dia.	
51283-14	D	98	14.46	5.5	8.31	9.44	11.25	10	1.31	6, BAL, Obsolete
51421-01	P	66	17.25	4.68	7.5	9.88	11.25	10	0.813	Will be obsoleted when current stock is depleted.
51952-11	D	108	16.50	7.32	8.13	11.00	12.75	5 & 6	0.64	
51961-10	CX	105	16.50	7.5	8.44	11.00	12.50	5 & 6	0.66	Obsolete
52020-01	CX	99	16.50	7.47	9.5	9.44	11.25	10	0.83	
52120-12	CX	107	16.50	7.28	8.44	11.25	12.75	5 & 6	0.78	
52120-128	CX	107	16.50	7.28	8.44	11.25	12.75	5 & 6	0.78	BAL - Special Order
52230-10	CX	105	16.50	7.44	8.39	9.44	11.00	5 & 6	0.81 & 0.66	
52327-10	DR	108	16.50	7.5	8.75	9.50	11.25	10	0.80	
52327-11	DR	108	16.50	7.5	8.75	9.50	11.25	5 & 6	0.81& 0.64	Obsolete - use 54249-01
52336-108	K	162	14.50	10.44	12.81	9.44	11.25	10	1.31	1[5 holes],3,5,7,10, 12.75" Pilot, BAL
52336-148	K	161	14.50	10.44	12.81	9.44	11.25	10	1.31	1[5 holes],3,5,6,7,12.75" Pilot, BAL
52472-128	K	79	14.50	5.31	8	9.44	11.25	10	1.31	1[5 holes],3,5,7,12.75" Pilot, BAL. Will be obsoleted when current stock is depleted
52480-108	K	125	14.50	8.44	11.5	9.44	11.25	10	1.28	1[5 holes],3,5,13" Pilot, BAL, Obsolete
52511-01	CX	79	12.25	7.87	9.04	7.00	8.25	6	0.66 & 0.54	
52647-11	OW	94	16.50	7.38	8.25	11.25	12.75	5 & 6	0.66	Obsolete - use 54264-01
52705-30	CX	113	16.50	7.81	10.61	9.00	11.25	10	0.81	Obsoleted after current stock depleted
52705-308	CX	113	16.50	7.81	10.61	9.00	11.25	10	0.81	BAL
52743-11	CX	81	12.25	7.89	8.88	8.50	10.00	3 & 6	0.69	
52757-308	D	112	14.50	5.31	8	9.44	11.25	10	1.31	1[5 holes],12.75" Pilot, BAL, Obsolete
52824-138	K	113	14.50	6.44	8.69	9.44	11.25	10	1.31	1[5holes],3,5,7,12.75"Pilot, BAL
52824-148	K	113	14.46	6.44	8.69	9.44	11.25	10	1.31	Will be obsoleted when current stock is depleted
52877-11	CX	121	16.50	7.52	10.75	9.44	11.25	10	0.81	1 [3 holes]
52878-01	CX	116	16.50	7.51	10.44	8.53	11.25	10	0.81	Cast-in Grease Slinger
52890-13	CX	103	16.50	7.63	8.75	10.50	12.75	5 & 6	0.78	5 & 6 Bolt Holes. Will be obsoleted when stock depleted. Replaced by Gunite 2997D
52918-01	CX	167	16.50	10.56	13.38	8.53	11.25	10	0.80	Obsolete
52919-017	CX	110	16.50	6.5	9.81	9.00	11.25	10	1.31	Obsolete
52965-117	D	205	15.13	10.48	12.38	9.44	11.25	10	1.31	Obsolete
52965-119	D	205	15.13	10.48	12.38	9.44	11.25	10	1.31	BAL, Obsolete
52966-108	D	134	15.13	6.69	8.66	9.44	11.25	10	1.31	1[5holes],5,10,12.75"Pilot, BAL Obsolete
52975-118	L	83	16.14	6.63	8.38	11.73	13.19	10	0.91	Obsolete - Use 54298-118
52976-118	L	110	16.14	9.19	11.81	11.73	13.19	15	0.91	Obsolete- Use 54299-118
52981-018	CX	88	15.00	4.44	8.76	9.00	11.25	10	1.28	BAL, Obsolete
53026-01	CX	114	16.50	7.87	10.59	8.53	11.25	10	0.81	
53026-018	CX	114	16.50	7.87	10.59	8.53	11.25	10	0.81	BAL, Special Order
53033-30	U	115	16.50	7.51	10.63	9.00	10.83	8	0.98	
53039-01	CX	81	12.25	8.13	10.46	7.13	8.75	10	0.81	
53039-11	CX	81	12.25	8.13	10.46	7.13	8.75	6	0.81	
53075-018	U	79	15.00	4.69	8.88	8.78	11.25	10	0.98	BAL

1- Outboard Mount, 2-Outside Hub Fit, 3-Circular Ribs, 4-Vertical Ribs, 5-Vents, 6 Undersized Brake Face, 7-Drilled for Noise Dampener, 8-Drilled for Electric Brakes, 9-Drilled for 121 Exciter, 10-Notched for 121 Exciter - **Obsolete pn's available until current stock depleted**

Brake Drum Dimensional Data (By PN)



Drum PN	Type	Weight	Brake Face Dia	Brake Face Width	Overall Depth	Hub Pilot	Bolt Hole Circle	Bolt Holes		Special Info
								No.	Dia.	
54201-108	H	77	15.00	4.76	8.86	8.78	11.25	10	1.28	BAL
54202-01	K	122	16.50	7.4	10.31	8.78	11.25	10	0.98	
54203-01	AX	137	18.00	7.48	8.24	11.00	12.75	6	0.66	Will be obsoleted when current stock depleted. Replaced by Gunite 3197X
54207-018	G	67	15.00	4.41	5.87	9.25	11.25	5 & 6	0.78	BAL
54208-01	K	118	16.50	7.34	8.13	8.53	11.25	10	0.81	Will be obsoleted when current stock depleted. Replaced by Gunite 3699
54209-018	K	112	16.50	7.5	10.31	9.00	11.25	10	0.81	BAL
54210-018	B	105	16.50	6.34	7.44	11.25	12.75	6	0.78	BAL
54212-01	L	117	16.50	7.26	9.69	8.78	11.25	10	1.28	Obsolete
54213-01	Q	116	16.50	7.4	11.18	8.78	11.25	10	1.00	
54213-018	Q	116	16.50	7.4	11.18	8.78	11.25	10	1.00	BAL
54214-018	L	87	15.00	5.45	9.21	8.78	11.25	10	1.28	BAL
54215-01	AX	79	12.25	7.96	9.07	8.50	10.00	6	0.66	Obsolete
54216-01	Q	90	16.50	5.47	8.11	8.78	11.25	10	1.28	Obsolete - Use 54216-018
54216-018	Q	90	16.50	5.47	8.11	8.78	11.25	10	1.28	BAL
54217-018	AX	85	16.50	5.22	6.41	10.00	12.75	5 & 6	0.78	BAL
54224-018	KFD	70	15.00	4.77	8.86	8.78	11.25	10	1.00	BAL
54226-018	QFD	131	16.50	6.75	9.88	9.00	11.25	10	1.25	10, BAL, Obsolete
54228-01	UF	113	15.00	9.88	12.2	8.78	11.25	10	1.00	Approved for 19.5" disc wheels
54228-018	UF	113	15.00	9.88	12.2	8.78	11.25	10	1.00	BAL, Approved for 19.5" disc wheels
54229-01	QFD	117	16.50	9.06	11.46	8.78	11.25	10	1.00	Will be obsoleted when current stock depleted. Use 54229-018
54229-018	QFD	117	16.50	9.06	11.46	8.78	11.25	10	1.00	BAL
54230-01	CX	145	18.00	7.56	8.87	11.25	12.75	6 & 6	0.78 & 0.65	Obsolete
54231-018	U	176	16.50	9.44	11.56	11.25	13.19	10	1.06	BAL
54232-018	U	147	16.50	9.16	11.28	11.25	13.19	10	1.06	BAL. Will be obsoleted when current stock depleted. No replacement.
54234-018	K	117	16.50	7.46	10.83	8.78	11.25	10	1.00	BAL
54236-018	K	134	16.50	8.87	11.46	8.78	11.25	10	0.94	BAL, Obsolete
54238-018	U	84	16.50	5.38	9.04	8.78	11.25	10	1.25	BAL
54240-01	U	107	16.50	6.77	9.65	11.25	13.19	10	0.94	Obsolete
54241-018	CX	85	15.00	4.82	8.84	9.00	11.25	10	1.28	BAL
54242-018	CX	126	16.50	6.46	9.76	8.78	11.25	10	1.00	BAL
54243-018	U	85	15.00	5.28	9.04	9.00	11.25	10	1.26	BAL
54244-01	AX	87	12.25	10.62	11.22	9.00	10.83	8	0.98	
54244-018	AX	87	12.25	10.62	11.22	9.00	10.83	8	0.98	BAL
54248-018	U	107	16.50	6.5	9.76	8.78	11.25	10	1.25	BAL
54248-308	U	106	16.50	6.41	9.76	9.00	11.25	10	1.31	BAL
54249-01	OW	115	16.50	7.48	8.74	9.50	11.25	5 & 6	0.81 & 0.65	
54250-01	UD	117	16.50	7.5	10.6	11.25	13.19	10	1.00	
54250-018	UD	117	16.50	7.5	10.6	11.25	13.19	10	1.00	BAL
54251-01	UD	139	16.50	9.14	12.37	11.25	13.19	10	0.94	
54253-018	AX	145	16.14	9.03	10.85	11.10	13.19	10	0.91	BAL. Will be obsoleted when current stock depleted.

1- Outboard Mount, 2-Outside Hub Fit, 3-Circular Ribs, 4-Vertical Ribs, 5-Vents, 6 Undersized Brake Face, 7-Drilled for Noise Dampener, 8-Drilled for Electric Brakes, 9-Drilled for 121 Exciter, 10-Notched for 121 Exciter - **Obsolete pn's available until current stock depleted**



Brake Drum Dimensional Data (By PN)

Drum PN	Type	Weight	Brake Face Dia	Brake Face Width	Overall Depth	Hub Pilot	Bolt Hole Circle	Bolt Holes		Special Info
								No.	Dia.	
54256-018	CX	46	12.80	4.25	6.54	6.52	8.07	6	0.79	1.5, BAL
54257-018	U	99	16.50	5.5	8.56	8.78	11.25	10	1.00	BAL
54258-018	U	107	16.50	6.56	9.44	11.25	13.19	10	1.00	BAL
54259-018	CX	85	15.00	5.45	9.22	9.00	11.25	10	1.28	BAL
54261-018	U	125	16.50	7.6	10.59	8.78	11.25	10	1.00	BAL
54264-01	F	91	16.50	7.19	8.19	11.25	12.75	5 & 6	0.79 & 0.66	11.25 Hub Bore
54266-018	OW	124	16.50	6.5	9.75	8.53	11.25	10	1.28	BAL. Will be obsoleted when current stock depleted.
54267-018	V	126	16.50	7.46	10.37	8.78	11.25	10	0.94	BAL, Obsolete - replaced by Gunite 3576X
54268-018	V	106	16.50	6.61	9.65	11.25	13.19	10	1.00	4, BAL
54268-128	V	106	16.50	6.62	9.65	11.25	13.19	10	1.00	BAL, Obsolete
54269-01	U	122	16.50	8.54	11.1	8.75	11.25	10	1.02	Special Order
54269-018	U	122	16.50	8.54	11.1	8.75	11.25	10	1.02	BAL
54270-018	B	122	15.00	9.25	11.75	8.78	11.25	10	1.00	BAL
54271-01	V	106	15.00	7.75	10.59	8.78	11.25	10	0.94	Will be obsoleted when current stock depleted.
54272-018	OW	75	15.00	4.76	8.98	8.75	11.25	10	0.81	BAL
54275-018	OW	101	16.50	5.51	9.22	9.00	11.25	10	1.28	BAL
54276-018	G	81	15.00	4.54	9.04	8.78	11.25	10	1.00	BAL, Obsolete
54280-018	K	180	14.50	10.51	12.81	9.44	11.25	10	1.31	10, 12.75 Pilot Dia., BAL
54281-018	K	111	14.50	6.46	8.7	9.44	11.25	10	1.31	12.75 Pilot Dia., BAL
54282-018	AX	75	15.00	6.26	9.47	8.78	11.25	10	0.94	1
54284-01	AX	120	15.50	8.38	10.69	11.06	13.19	10	1.03	Obsolete
54286-018	CX	1.4	16.14	9.19	11.81	11.74	13.19	10	0.94	11.73 Hub Bore, BAL
54289-018	AX	46	12.80	5.33	6.54	9.00	10.83	8	1.00	BAL
54290-018	U	181	16.50	10.47	13.19	8.78	11.25	10	1.00	BAL
54292-018	U	123	16.50	6.65	9.88	8.78	11.25	10	1.00	BAL
54293-018	CX	84	15.00	4.56	9.04	8.78	11.25	10	1.30	BAL
54294-018	U	136	16.50	9.7	12.39	9	10.83	8	1.00	BAL, Obsolete
54295-018	U	79	15.00	6.64	9.85	8.78	11.25	10	1.28	1, BAL
54296-018	U	80	15.00	5.4	9.31	8.78	11.25	10	1.00	BAL
54298-118	OW	88	16.15	6.54	8.35	11.74	13.19	10	0.94	BAL
54299-118	U	130	16.15	9.07	11.81	11.74	13.19	5 & 10	0.94	BAL
54301-018	U	130	16.50	6.5	9.54	8.78	11.25	10	1.28	BAL
54304-01	UD	174	18.00	7.67	11.95	11.25	13.19	10	1.06	
54312-108	B	174	16.142	8.92	10.83	11.06	13.19	10	1.02	Will be obsoleted when current stock depleted.
54727-01	U	136	16.50	9.62	12.39	8.78	11.25	10	0.98	
555-01811	L	141	18.00	7.88	9.75	11.25	13.19	10	1.06	Obsolete
555-18006B	QD	138	18.00	7.5	8.75	9.50	11.25	6	0.75	Obsolete
555-20057B	A	238	20.00	8.56	12.63	11.00	13.19	10	1.06	Obsolete
555-2005B	A	242	20.00	8.5	12.5	10.63	13.19	10	1.06	Obsolete
555-2009B	D	198	20.00	8.52	10.25	10.63	13.19	6	0.81	Obsolete
555-2021B	D	209	20.00	7.41	9.25	13.25	15.00	12	0.78	Obsolete
555-2023	D	240	20.00	8.61	10.94	13.25	15.00	12	0.78	Obsolete
555-2027	P	218	20.00	8.61	10.94	11.00	12.50	12	0.66	Obsolete

Brake Drum Dimensional Data (By PN)



Drum PN	Type	Weight	Brake Face Dia	Brake Face Width	Overall Depth	Hub Pilot	Bolt Hole Circle	Bolt Holes		Special Info
								No.	Dia.	
555-2035B	QD	190	20.00	9	11	9.50	11.25	6	0.66	Obsolete
60000-01	U	102	16.50	7.56	10.56	8.78	11.25	10	1.00	
60000-018	U	102	16.50	7.56	10.56	8.78	11.25	10	1.00	BAL
60001-018	U	108	16.50	7.56	10.62	8.78	11.25	10	1.00	BAL
80000-018	U	88	16.50	7.56	10.39	8.78	11.25	10	1.00	Composite Steel Shell. Obsolete, replaced by 80002-018
80002-018	U	88	16.50	7.56	10.39	8.78	11.25	10	1.00	Composite Steel Shell
80005-018	U	73	16.50	5.7	8.82	8.78	11.25	10	1.28	Composite Steel Shell
80008-018	U	102	16.50	9.13	11.06	8.78	11.25	10	1.00	Composite Steel Shell
80045-018	U	76	16.50	5.91	9.21	8.78	11.25	10	1.28	Composite Steel Shell

KIC Brake Drum Dimensional Data (By Brake Shoe Size)

Brake Shoe Size	Drum PN	Brake Face Dia	Brake Face Width	Overall Depth	Hub Pilot	Bolt Hole Circle	Bolt Holes		Type	Weight	Special Info
							No.	Dia.			
12.25 x 7.5	52511-01	12.25	7.87	9.04	7.00	8.25	6	0.66 & 0.54	CX	79	
	52743-11	12.25	7.89	8.88	8.50	10.00	3 & 6	0.69	CX	81	
	54215-01	12.25	7.96	9.07	8.50	10.00	6	0.66	AX	79	Obsolete
	53039-01	12.25	8.13	10.46	7.13	8.75	10	0.81	CX	81	
	53039-11	12.25	8.13	10.46	7.13	8.75	6	0.81	CX	81	
	54244-01	12.25	10.62	11.22	9.00	10.83	8	0.98	AX	87	
	54244-018	12.25	10.62	11.22	9.00	10.83	8	0.98	AX	87	BAL
12.8 x 3.93 (325mm x 100mm)	54256-018	12.80	4.25	6.54	6.52	8.07	6	0.79	CX	46	1,5, BAL
12.8 x 4	54289-018	12.80	5.33	6.54	9.00	10.83	8	1.00	AX	46	BAL
	51283-14	14.46	5.5	8.31	9.44	11.25	10	1.31	D	98	6, BAL, Obsolete
14.5 x 5	52472-128	14.50	5.31	8	9.44	11.25	10	1.31	K	79	1[5 holes],3,5,7,12.75" Pilot, BAL. Will be obsoleted when current stock is depleted
	52757-308	14.50	5.31	8	9.44	11.25	10	1.31	D	112	1[5 holes],12.75" Pilot, BAL, Obsolete
14.5 x 6	52824-138	14.50	6.44	8.69	9.44	11.25	10	1.31	K	113	1[5holes],3,5,7,12.75"Pilot, BAL
	52824-148	14.46	6.44	8.69	9.44	11.25	10	1.31	K	113	Will be obsoleted when current stock is depleted
	54281-018	14.50	6.46	8.7	9.44	11.25	10	1.31	K	111	12.75 Pilot Dia., BAL
14.5 x 8	52480-108	14.50	8.44	11.5	9.44	11.25	10	1.28	K	125	1[5 holes],3,5,13" Pilot, BAL, Obsolete
14.5 x 10	52336-108	14.50	10.44	12.81	9.44	11.25	10	1.31	K	162	1[5 holes],3,5,7,10, 12.75" Pilot, BAL
	52336-148	14.50	10.44	12.81	9.44	11.25	10	1.31	K	161	1[5 holes],3,5,6,7,12.75" Pilot, BAL
	54280-018	14.50	10.51	12.81	9.44	11.25	10	1.31	K	180	10, 12.75 Pilot Dia., BAL
15 x 4	52981-018	15.00	4.44	8.76	9.00	11.25	10	1.28	CX	88	BAL, Obsolete
	53075-018	15.00	4.69	8.88	8.78	11.25	10	0.98	U	79	BAL
	54201-108	15.00	4.76	8.86	8.78	11.25	10	1.28	H	77	BAL
	54207-018	15.00	4.41	5.87	9.25	11.25	5 & 6	0.78	G	67	BAL
	54224-018	15.00	4.77	8.86	8.78	11.25	10	1.00	KFD	70	BAL
	54241-018	15.00	4.82	8.84	9.00	11.25	10	1.28	CX	85	BAL
	54243-018	15.00	5.28	9.04	9.00	11.25	10	1.26	U	85	BAL
	54272-018	15.00	4.76	8.98	8.75	11.25	10	0.81	OW	75	BAL
	54276-018	15.00	4.54	9.04	8.78	11.25	10	1.00	G	81	BAL, Obsolete
	54293-018	15.00	4.56	9.04	8.78	11.25	10	1.30	CX	84	BAL
15 x 5	54214-018	15.00	5.45	9.21	8.78	11.25	10	1.28	L	87	BAL
	54259-018	15.00	5.45	9.22	9.00	11.25	10	1.28	CX	85	BAL
	54296-018	15.00	5.4	9.31	8.78	11.25	10	1.00	U	80	BAL
15 x 6	54282-018	15.00	6.26	9.47	8.78	11.25	10	0.94	AX	75	1
	54295-018	15.00	6.64	9.85	8.78	11.25	10	1.28	U	79	1, BAL
15 x 7	54271-01	15.00	7.75	10.59	8.78	11.25	10	0.94	V	106	Will be obsoleted when current stock depleted.

1- Outboard Mount, 2-Outside Hub Fit, 3-Circular Ribs, 4-Vertical Ribs, 5-Vents, 6 Undersized Brake Face, 7-Drilled for Noise Dampener, 8-Drilled for Electric Brakes, 9-Drilled for 121 Exciter, 10-Notched for 121 Exciter - **Obsolete pn's available until current stock depleted**

Brake Drum Dimensional Data (By Brake Shoe Size)

Brake Shoe Size	Drum PN	Brake Face Dia	Brake Face Width	Overall Depth	Hub Pilot	Bolt Hole Circle	Bolt Holes		Type	Weight	Special Info
							No.	Dia.			
15 x 8.62	54228-01	15.00	9.88	12.2	8.78	11.25	10	1.00	UF	113	Approved for 19.5" disc wheels
	54228-018	15.00	9.88	12.2	8.78	11.25	10	1.00	UF	113	BAL, Approved for 19.5" disc wheels
	54270-018	15.00	9.25	11.75	8.78	11.25	10	1.00	B	122	BAL
15.125 x 10	52965-117	15.13	10.48	12.38	9.44	11.25	10	1.31	D	205	Obsolete
	52965-119	15.13	10.48	12.38	9.44	11.25	10	1.31	D	205	BAL, Obsolete
15.125 x 6	52966-108	15.13	6.69	8.66	9.44	11.25	10	1.31	D	134	1[Sholes],5,10,12.75"Pilot, BAL Obsolete
15.5 x 8	54284-01	15.50	8.38	10.69	11.06	13.19	10	1.03	AX	120	Obsolete
16.14 x 6	52975-118	16.14	6.63	8.38	11.73	13.19	10	0.91	L	83	Obsolete - Use 54298-118
	54298-118	16.15	6.54	8.35	11.74	13.19	10	0.94	OW	88	BAL
	54312-108	16.142	8.92	10.83	11.06	13.19	10	1.02	B	174	Will be obsoleted when current stock depleted.
16.14 x 8.62	52976-118	16.14	9.19	11.81	11.73	13.19	15	0.91	L	110	Obsolete- Use 54299-118
	54253-018	16.14	9.03	10.85	11.10	13.19	10	0.91	AX	145	BAL. Will be obsoleted when current stock depleted.
	54286-018	16.14	9.19	11.81	11.74	13.19	10	0.94	CX	1.4	11.73 Hub Bore, BAL
16.14 x 9	54299-118	16.15	9.07	11.81	11.74	13.19	5 & 10	0.94	U	130	BAL
16.5 x 4	54217-018	16.50	5.22	6.41	10.00	12.75	5 & 6	0.78	AX	85	BAL
16.5 x 5	54216-01	16.50	5.47	8.11	8.78	11.25	10	1.28	Q	90	Obsolete - Use 54216-018
	54216-018	16.50	5.47	8.11	8.78	11.25	10	1.28	Q	90	BAL
	54238-018	16.50	5.38	9.04	8.78	11.25	10	1.25	U	84	BAL
	54257-018	16.50	5.5	8.56	8.78	11.25	10	1.00	U	99	BAL
	54275-018	16.50	5.51	9.22	9.00	11.25	10	1.28	OW	101	BAL
	80005-018	16.50	5.7	8.82	8.78	11.25	10	1.28	U	73	Composite Steel Shell
	80045-018	16.50	5.91	9.21	8.78	11.25	10	1.28	U	76	Composite Steel Shell
16.5 x 6	52919-017	16.50	6.5	9.81	9.00	11.25	10	1.31	CX	110	Obsolete
	54210-018	16.50	6.34	7.44	11.25	12.75	6	0.78	B	105	BAL
	54226-018	16.50	6.75	9.88	9.00	11.25	10	1.25	QFD	131	10, BAL, Obsolete
	54240-01	16.50	6.77	9.65	11.25	13.19	10	0.94	U	107	Obsolete
	54242-018	16.50	6.46	9.76	8.78	11.25	10	1.00	CX	126	BAL
	54248-018	16.50	6.5	9.76	8.78	11.25	10	1.25	U	107	BAL
	54248-308	16.50	6.41	9.76	9.00	11.25	10	1.31	U	106	BAL
	54258-018	16.50	6.56	9.44	11.25	13.19	10	1.00	U	107	BAL
	54266-018	16.50	6.5	9.75	8.53	11.25	10	1.28	OW	124	BAL. Will be obsoleted when current stock depleted.
	54268-018	16.50	6.61	9.65	11.25	13.19	10	1.00	V	106	4, BAL
	54268-128	16.50	6.62	9.65	11.25	13.19	10	1.00	V	106	BAL, Obsolete
	54292-018	16.50	6.65	9.88	8.78	11.25	10	1.00	U	123	BAL
54301-018	16.50	6.5	9.54	8.78	11.25	10	1.28	U	130	BAL	

1- Outboard Mount, 2-Outside Hub Fit, 3-Circular Ribs, 4-Vertical Ribs, 5-Vents, 6 Undersized Brake Face, 7-Drilled for Noise Dampener, 8-Drilled for Electric Brakes, 9-Drilled for 121 Exciter, 10-Notched for 121 Exciter - **Obsolete pn's available until current stock depleted**

KIC Brake Drum Dimensional Data (By Brake Shoe Size)

Brake Shoe Size	Drum PN	Brake Face Dia	Brake Face Width	Overall Depth	Hub Pilot	Bolt Hole Circle	Bolt Holes		Type	Weight	Special Info
							No.	Dia.			
16.5 x 7	51952-11	16.50	7.32	8.13	11.00	12.75	5 & 6	0.64	D	108	
	51961-10	16.50	7.5	8.44	11.00	12.50	5 & 6	0.66	CX	105	Obsolete
	52020-01	16.50	7.47	9.5	9.44	11.25	10	0.83	CX	99	
	52120-12	16.50	7.28	8.44	11.25	12.75	5 & 6	0.78	CX	107	
	52120-128	16.50	7.28	8.44	11.25	12.75	5 & 6	0.78	CX	107	BAL - Special Order
	52230-10	16.50	7.44	8.39	9.44	11.00	5 & 6	0.81 & 0.66	CX	105	
	52327-10	16.50	7.5	8.75	9.50	11.25	10	0.80	DR	108	
	52327-11	16.50	7.5	8.75	9.50	11.25	5 & 6	0.81 & 0.64	DR	108	Obsolete - use 54249-01
	52647-11	16.50	7.38	8.25	11.25	12.75	5 & 6	0.66	OW	94	Obsolete - use 54264-01
	52705-30	16.50	7.81	10.61	9.00	11.25	10	0.81	CX	113	Obsoleted after current stock depleted
	52705-308	16.50	7.81	10.61	9.00	11.25	10	0.81	CX	113	BAL
	52877-11	16.50	7.52	10.75	9.44	11.25	10	0.81	CX	121	1 [3 holes]
	52878-01	16.50	7.51	10.44	8.53	11.25	10	0.81	CX	116	Cast-in Grease Slinger
	52890-13	16.50	7.63	8.75	10.50	12.75	5 & 6	0.78	CX	103	5 & 6 Bolt Holes. Will be obsoleted when stock depleted. Replaced by Gunite 2997D
	53026-01	16.50	7.87	10.59	8.53	11.25	10	0.81	CX	114	
	53026-018	16.50	7.87	10.59	8.53	11.25	10	0.81	CX	114	BAL, Special Order
	53033-30	16.50	7.51	10.63	9.00	10.83	8	0.98	U	115	
	54202-01	16.50	7.4	10.31	8.78	11.25	10	0.98	K	122	
	54208-01	16.50	7.34	8.13	8.53	11.25	10	0.81	K	118	Will be obsoleted when current stock depleted. Replaced by Gunite 3699
	54209-018	16.50	7.5	10.31	9.00	11.25	10	0.81	K	112	BAL
	54212-01	16.50	7.26	9.69	8.78	11.25	10	1.28	L	117	Obsolete
	54213-01	16.50	7.4	11.18	8.78	11.25	10	1.00	Q	116	
	54213-018	16.50	7.4	11.18	8.78	11.25	10	1.00	Q	116	BAL
	54234-018	16.50	7.46	10.83	8.78	11.25	10	1.00	K	117	BAL
	54249-01	16.50	7.48	8.74	9.50	11.25	5 & 6	0.81 & 0.65	OW	115	
	54250-01	16.50	7.5	10.6	11.25	13.19	10	1.00	UD	117	
	54250-018	16.50	7.5	10.6	11.25	13.19	10	1.00	UD	117	BAL
	54261-018	16.50	7.6	10.59	8.78	11.25	10	1.00	U	125	BAL
	54264-01	16.50	7.19	8.19	11.25	12.75	5 & 6	0.79 & 0.66	F	91	11.25 Hub Bore
	54267-018	16.50	7.46	10.37	8.78	11.25	10	0.94	V	126	BAL, Obsolete - replaced by Gunite 3576X
60000-01	16.50	7.56	10.56	8.78	11.25	10	1.00	U	102		
60000-018	16.50	7.56	10.56	8.78	11.25	10	1.00	U	102	BAL	
60001-018	16.50	7.56	10.62	8.78	11.25	10	1.00	U	108	BAL	
80000-018	16.50	7.56	10.39	8.78	11.25	10	1.00	U	88	Composite Steel Shell. Obsolete, replaced by 80002-018	
80002-018	16.50	7.56	10.39	8.78	11.25	10	1.00	U	88	Composite Steel Shell	

Brake Drum Dimensional Data (By Brake Shoe Size)

Brake Shoe Size	Drum PN	Brake Face Dia	Brake Face Width	Overall Depth	Hub Pilot	Bolt Hole Circle	Bolt Holes		Type	Weight	Special Info
							No.	Dia.			
16.5 x 8.62	54229-01	16.50	9.06	11.46	8.78	11.25	10	1.00	QFD	117	Will be obsoleted when current stock depleted. Use 54229-018
	54229-018	16.50	9.06	11.46	8.78	11.25	10	1.00	QFD	117	BAL
	54231-018	16.50	9.44	11.56	11.25	13.19	10	1.06	U	176	BAL
	54232-018	16.50	9.16	11.28	11.25	13.19	10	1.06	U	147	BAL. Will be obsoleted when current stock depleted. No replacement.
	54236-018	16.50	8.87	11.46	8.78	11.25	10	0.94	K	134	BAL, Obsolete
	54251-01	16.50	9.14	12.37	11.25	13.19	10	0.94	UD	139	
	54294-018	16.50	9.7	12.39	9	10.83	8	1.00	U	136	BAL, Obsolete
	54727-01	16.50	9.62	12.39	8.78	11.25	10	0.98	U	136	
16.50 x 8	80008-018	16.50	9.13	11.06	8.78	11.25	10	1.00	U	102	Composite Steel Shell
	54269-01	16.50	8.54	11.1	8.75	11.25	10	1.02	U	122	Special Order
16.5 x 10	54269-018	16.50	8.54	11.1	8.75	11.25	10	1.02	U	122	BAL
	52918-01	16.50	10.56	13.38	8.53	11.25	10	0.80	CX	167	Obsolete
17.25 x 5	54290-018	16.50	10.47	13.19	8.78	11.25	10	1.00	U	181	BAL
	51421-01	17.25	4.68	7.5	9.88	11.25	10	0.813	P	66	Will be obsoleted when current stock is depleted.
18 x 7	54203-01	18.00	7.48	8.24	11.00	12.75	6	0.66	AX	137	Will be obsoleted when current stock depleted. Replaced by Gunite 3197X
	54230-01	18.00	7.56	8.87	11.25	12.75	6 & 6	0.78 & 0.65	CX	145	Obsolete
	54304-01	18.00	7.67	11.95	11.25	13.19	10	1.06	UD	174	
	555-01811	18.00	7.88	9.75	11.25	13.19	10	1.06	L	141	Obsolete
20 x 7	555-18006B	18.00	7.5	8.75	9.50	11.25	6	0.75	QD	138	Obsolete
	555-2021B	20.00	7.41	9.25	13.25	15.00	12	0.78	D	209	Obsolete
20 x 8	555-20057B	20.00	8.56	12.63	11.00	13.19	10	1.06	A	238	Obsolete
	555-2005B	20.00	8.5	12.5	10.63	13.19	10	1.06	A	242	Obsolete
	555-2009B	20.00	8.52	10.25	10.63	13.19	6	0.81	D	198	Obsolete
	555-2023	20.00	8.61	10.94	13.25	15.00	12	0.78	D	240	Obsolete
	555-2027	20.00	8.61	10.94	11.00	12.50	12	0.66	P	218	Obsolete
	555-2035B	20.00	9	11	9.50	11.25	6	0.66	QD	190	Obsolete



Competitive Interchange (Competitor to KIC)

BLUEBIRD BUS		DAYTON/ MERITOR	KIC	DAYTON/ MERITOR	KIC
BLUEBIRD	KIC				
1117365	54275-018	120754	51961-10	122853	52230-10
1460062	54234-018	120782	52020-01	122854	52020-01
1460195	54207-018	120822	54215-01	122905	52020-01
1579200	54236-018	120877	52877-11	122921	54272-018
2081332	52965-117	122009	52890-13	122925	54264-01
2081333	52966-108	122046	54217-018	122948	54209-018
2137222	52918-01	122079	52120-128	122963	54215-01
2137610	52120-128	122083	52120-128	122971	52511-01
2237670	54295-018	122103	52327-11	122978	52878-01
2602167	52878-01	122104	54207-018	122986	54209-018
2602167	54208-01	122153	52120-128	123025	54250-01
2602167	54208-01	122155	52230-10	123039	52120-128
2602167	52878-01	122201	52327-11	123058	52327-11
		122222	52230-10	123200	52890-13
		122276	54215-01	123207	60001-018
		122300	52890-13	123254	54201-108
		122328	51961-10	123297	54209-018
		122329	51961-10	123312	54241-018
		122340	52890-13	123312	52981-018
		122374	52120-128	123366	53075-018
		122376	54215-01	123376	52878-01
		122376	52743-11	123382	54201-108
		122430	52890-13	123391	54209-018
		122453	52878-01	123396	53075-018
		122453	54208-01	123399	54248-018
		122455	52647-11	123404	60001-018
		122490	52120-128	123413	53075-018
		122502	52647-11	123415	52877-11
		122548	52705-308	123416	60001-018
		122550	52705-308	123417	52020-01
		122550	52705-30	123419	52647-11
		122560	52647-11	123420	54201-108
		122600	51952-11	123421	53075-018
		122604	52647-11	123422	52877-11
		122606	52511-01	123427	54210-018
		122607	52878-01	123428	54727-01
		122607	53026-01	123431	54207-018
		122643	52020-01	123448	54214-018
		122683	52120-128	123520	54269-018
		122752	54208-01	123537	60001-018
		122782	52647-11	123561	54258-018
		122812	51283-14	123569	54301-018
		122819	52511-01	123580	54269-018

DAYTON/MERITOR	
DAYTON/ MERITOR	KIC
12582	52020-01
85790	52647-11
120001	52230-10
120017	52230-10
120038	52230-10
120046	52230-10
120063	52020-01
120106	52020-01
120107	52230-10
120152	51961-10
120155	51952-11
120172	52327-11
120190	52647-11
120196	52647-11
120271	54230-01
120389	52230-10
120406	52480-108
120408	52472-128
120493	52511-01
120501	52647-11
120586	52327-11
120728	51952-11
120743	51952-11

Competitive Interchange (Competitor to KIC)



DAYTON/ MERITOR	KIC	DAYTON/ MERITOR	KIC	DURABRAKE	
				DURABRAKE	KIC
123581	54727-01	3219-N-4070	54208-01	1244	53039-01
03-012582-002	52020-01	3219-P-2356	52020-01	1607	52918-01
03-120586-002	52327-11	3219-P-4072	54208-01	1629	52020-01
03-120743-002	51952-11	3219-P-4280	54259-018	1640	52327-11
03-120754-002	51961-10	3219-Q-4229	54208-01	1811	555-01811
03-120877-002	52877-11	3219-R-2930	52020-01	2005	555-2005B
03-122222-002	52230-10	3219-R-3944	52918-01	2023	555-2023
03-122453-003	52878-01	3219-S-3945	52918-01	2027	555-2027
03-122550-002	52705-30	3219-S-4543	54208-01	12617	54215-01
03-122607-002	53026-01	3219-T-1944	52020-01	12617	52743-11
03-122683-002	52120-12	3219-T-2486	52230-10	12637	52511-01
03-122683-002	52120-128	3219-T-4544	54208-01	14048	52965-117
03-122925-002	54264-01	3219-V-3714	52705-308	14048	52965-119
03-122948-002	54209-018	3219-V-4468	52918-01	14158	52981-018
03-122963-002	52743-11	3219-W-1137	52020-01	14503	52757-308
03-122971-002	52511-01	3219-W-1427	52020-01	14508	52480-108
03-123397-002	54202-01	3219-W-3689	52020-01	14512	52472-128
03-123409-002	53033-30	3219-W-4261	52918-01	14518	52824-148
03-123428-002	54727-01	3219-X-4262	52918-01	14518	52824-138
03-123430-002	52890-13	3219-Y-3561	52705-308	14659	54259-018
03-123431-002	54207-018	3219-Y-5797	54258-018	15113	54299-118
03-123466-002	54228-01	3219-Z-4264	52919-017	15115	54298-118
03-123500-002	54217-018	3219-Z-4290	54208-01	16139	52647-11
122822A	52230-10	3219-Z-5122	52918-01	16141	53033-30
3219-A-1795	52020-01	3219-Z-5798	54231-018	16149	51961-10
3219-A-4265	52919-017	4219-Z-3848	54241-018	16464	54258-018
3219-A-4291	54208-01	85-122550-002	52705-308	16474	54268-018
3219-A-5825	54727-01	85-123207-002	60001-018	16516	54264-01
3219-B-4006	52919-017	85-123254-002	54201-108	16600	54301-018
3219-C-3929	54241-018	85-123345-002	52981-018	16729	52877-11
3219-C-4007	52919-017	85-123366-002	53075-018	16778	52120-12
3219-C-5853	54301-018	85-123399-002	54248-018	16792	60001-018
3219-E-1462	51283-14	85-123427-002	54210-018	16794	52705-30
3219-E-2449	52020-01	85-123466-002	54270-018	16795	53026-01
3219-E-3567	54272-018	85-123520-002	54269-018	16797	52878-01
3219-F-2450	52020-01	85-123819-002	60000-01	16874	52230-10
3219-F-3568	54272-018	85-123819-002	60000-018	16907	51952-11
3219-G-3569	54259-018	B3219-G-5129	52824-138	16997	52890-13
3219-G-3933	54208-01	B3219-G-5857	54259-018	18006	555-18006B
3219-H-3570	54259-018	B3219-X-5900	54268-018	16051X	54231-018
3219-J-3078	52020-01	B3219-Y-5121	52965-119	16289B	54217-018
3219-J-3936	54208-01			16792B	60001-018
3219-J-4742	54241-018				



Competitive Interchange (Competitor to KIC)

DURABRAKE	KIC
20057B	555-20057B
2009B	555-2009B
2021B	555-2021B
2005	555-2005B
20057B	555-20057B
2009B	555-2009B
2021B	555-2021B

ERIE

ERIE	KIC
2740	52327-11
2752	52743-11
2760	52020-01
2764	52878-01
2764	60001-018
2764	53026-01
2764	52877-11
2765	51952-11
2772	52890-13
2773	52647-11
2777	52965-117
2777	52965-119
2700-10	52511-01
2738-1	52230-10
2764-5	60001-018
2770E	52120-12
2773-3	54264-01
2771	52705-308
2772	52890-13
2773	52647-11
2773-3	54264-01
2777	52965-117
2777	52965-119

NEW FLYER

NEWFLYER	KIC
6303647	52824-148
6312397	54298-118
6312400	54299-118
6312400	54286-018
6329620	54231-018
6329670	54258-018
6331255	54232-018
6331583	54253-018
6336592	54268-018
6337398	54301-018
6348633	52824-138

STEMCO

STEMCO	KIC
89996B	80000-018

WEBB WHEEL

WEBB	KIC
62027	555-2027
63617	52743-11
64026	54253-018
68765	52327-11
56864B	60000-018
60876F	52877-11
61527B	53075-018
61528B	54201-108
61577F	54271-01
61780F	51961-10
61854F	54230-01
61950B	54295-018
61951B	54282-018
61991B	54270-018
62026F	54253-018
62117B	54217-018
62200F	52020-01
62671F	54212-01
62997F	52890-13
63631F	53039-01
63635F	53039-11

WEBB	KIC
63637F	52511-01
63647F	54215-01
63680B	54244-018
63680F	54244-01
64003U	51283-14
64004B	52472-128
64009B	52480-108
64039B	54299-118
64040B	54298-118
64046B	52966-108
64048B	52965-119
64048F	52965-117
64051B	54231-018
64053B	54232-018
64089B	54286-018
64115B	54280-018
64117B	54281-018
64117B	52824-138
64117D	52824-148
64117F	52824-138
64117J	52824-138
64119B	52824-138
65004B	52757-308
65152B	54248-018
65153B	54296-018
65162B	54242-018
65166B	54266-018
65169F	54226-018
65170B	54292-018
65266B	54210-018
65514B	54207-018
65541B	54241-018
65546B	54272-018
65549B	54243-018
65551B	54259-018
65554B	54214-018
65555B	54276-018
65600B	54301-018
65600C	54301-018
65651B	54275-018
65670B	54234-018
66250F	54250-01
66258F	54251-01

Competitive Interchange (Competitor to KIC)



WEBB	KIC
66353B	54213-018
66353F	54213-01
66364B	54258-018
66366F	54240-01
66374B	54268-018
66661B	54267-018
66800B	54269-018
66800F	54269-01
66812F	52918-01
66814F	54727-01
66816B	54294-018
66827B	54236-018
66852F	54208-01
66854F	54229-01
66864B	60001-018
66865B	54209-018
66867B	54267-018
66873F	54202-01
66875F	53033-30
66892F	52878-01
66893B	53026-018
66893F	53026-01
66895B	52705-308
66895F	52705-30
67518F	52230-10
68845F	54216-01
68897F	51952-11
68942F	52647-11
68958F	54264-01
68981B	52120-128
68981F	52120-12
68985B	54257-018
69790F	54284-01
68897F	51952-11
68942F	52647-11
68958F	54264-01
68981B	52120-128
68981F	52120-12
68985B	54257-018
69790F	54284-01



Competitive Interchange (KIC to Competitor)

KIC	BLUEBIRD	DAYTON/ MERITOR	DURABRAKE	ERIE	NEW FLYER	STEMCO	WEBB WHEEL
51283-14		122812					64003U
51952-11		03-120743-002	16907	2765			68897F
51961-10		122328	16149				61780F
52020-01		3219-W-3689	1629	2760			62200F
52120-12		03-122683-002	16778	2770E			68981F
52120-128	2137610	122374					68981B
52230-10		120107	16874	2738-1			67518F
52327-10	1460112	120040	1639	2740-1			68730F
52327-11		120586	1640	2740			68765
52336-108	2014318	B3219-U-4493	14513		6327402		64115B
52336-148			14513				64115D
52472-128		120408	14512				64004B
52480-108		120406	14508				64009B
52511-01		122971	12637	2700-10			63637F
52647-11		122502	16139	2773			68942F
52705-30		03-122550-002	16794				66895F
52705-308		85-122550-002					66895B
52743-11		122376	12617	2752			63617
52757-308			14503				65004B
52824-138		B3219-G-5129	14518		6348633		64117F
52824-148			14518		6303647		64117D
52877-11		123422	16729	2764			60876F
52878-01	2602167	122978	16797	2764			66892F
52890-13		122300	16997	2772			62997F
52918-01	2137222	3219-X-4262	1607				66812F
52919-017		3219-A-4265					
52965-117	2081332		14048	2777			64048F
52965-119		B3219-Y-5121	14048	2777			64048B
52966-108	2081333						64046B
52981-018		123312	14158				
53026-01		03-122607-002	16795	2764			66893F
53026-018							66893B
53033-30		03-123409-002	16141				66875F
53039-01			1244				63631F
53039-11							63635F
53075-018		123366					61527B
54201-108		85-123254-002					61528B
54202-01		03-123397-002					66873F
54203-01		03-120936-002	18788	2766			61788F
54207-018	1460195	123431					65514B
54208-01	2602167	3219-Q-4229					66852F
54209-018		122948					66865B
54210-018		123427					65266B
54212-01							62671F
54213-01							66353F
54213-018							66353B
54214-018		123448					65554B
54215-01		120822	12617				63647F

Competitive Interchange (KIC to Competitor)

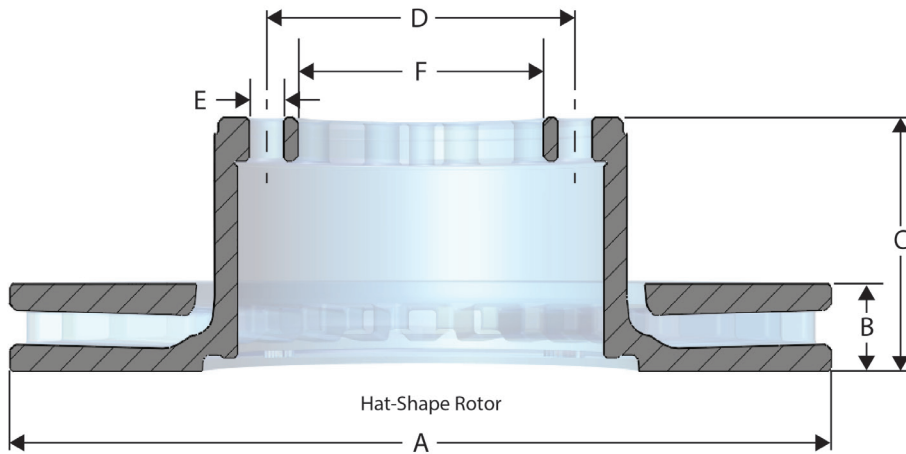
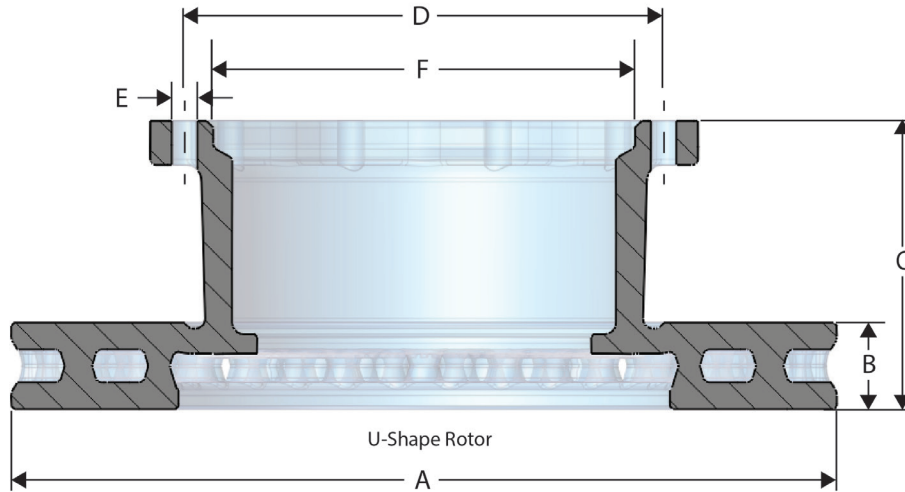


KIC	BLUEBIRD	DAYTON/ MERITOR	DURABRAKE	ERIE	NEW FLYER	STEMCO	WEBB WHEEL
54216-01							68845F
54217-018		03-123500-002	16289B				62117B
54224-018							
54226-018							65169F
54228-01		03-123466-002					
54229-01							66854F
54229-018		85-123570-002					
54230-01		120271					61854F
54231-018		3219-Z-5798	16051X		6329620		64051B
54232-018					6331255		64053B
54234-018	1460062						65670B
54236-018	1579200						66827B
54238-018		123383					65654B
54240-01							66366F
54241-018		3219-J-4742					65541B
54242-018							65162B
54243-018							65549B
54244-01							63680F
54244-018							63680B
54248-018		85-123399-002					65152B
54249-01		3219-P-1602	1640				68765F
54250-01		123025					66250F
54251-01							66258F
54253-018					6331583		64026
54256-018							
54257-018							68985B
54258-018		3219-Y-5797	16464		6329670		66364B
54259-018		3219-G-3569	14659				65551B
54261-018		123363					66884B
54264-01		122925	16516	2773-3			68958F
54266-018							65166B
54267-018							66867B
54268-018		B3219-X-5900	16474		6336592		66374B
54269-01							66800F
54269-018		123580					66800B
54270-018		85-123466-002					61991B
54271-01							61577F
54272-018		3219-F-3568					65546B
54275-018	1117365						65651B
54276-018							65555B
54280-018							64115B
54281-018							64117B
54282-018							61951B
54284-01							69790F
54286-018					6312400		64089B
54292-018							65170B
54293-018		03-123448-002					65548B
54294-018							66816B



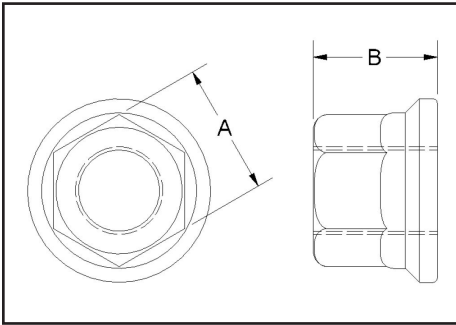
Competitive Interchange (KIC to Competitor)

KIC	BLUEBIRD	DAYTON/ MERITOR	DURABRAKE	ERIE	NEW FLYER	STEMCO	WEBB WHEEL
54295-018	2237670						61950B
54296-018							65153B
54298-118			15115		6312397		64040B
54299-118			15113		6312400		64039B
54301-018		123569	16600		6337398		65600B
54727-01		03-123428-002					66814F
555-01811			1811				
555-18006B			18006				
555-20057B			20057B				
555-2005B			2005				
555-2009B			2009B				
555-2021B			2021B				
555-2023			2023				
555-2027			2027				62027
60000-01		85-123819-002					
60000-018		85-123819-002					56864B
60001-018		85-123207-002	16792B	2764-5			66864B
80002-018		53123537002				89996B	96864B
80005-018		53123816002				600001	95710B
80008-018		53123771002				600026B	96854B
80045-018						90600B	95151B



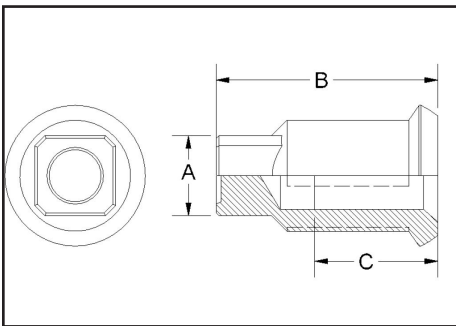
PN	A Disc Dia.	B Disc Thick- ness	C Overall Depth	D Bolt Circle	F Pilot Dia.	No. Bolt Holes	Bolt Size	ABS	Disc Geometry	Shape
71750	12.79	1.34	5.85	9.823	8.659	8	M16 x 2	cast-in	Vented- Pin, Diamond	U-Shape
71950	14.84	1.77	5.91	9.823	8.659	10	M16 x 2	cast-in	Vented- Pin, Diamond; Dual Connections	U-Shape
72250	16.93	1.77	5.91	9.823	8.659	10	M16 x 2	cast-in	Vented - Pin, Round, Dual Connection	U-Shape
72000	17.1	1.77	5.65	10.5	8.502	10	5/8"-18 UNF	no	Vented - Straight Vane	U-Shape
72001	17.1	1.75	5.64	9.823	7.64	10	5/8"-18 UNF	bolt-on	Vented - Straight Vane	U-Shape
72002	17.1	1.77	5.16	6.61	5.325	12	0.75	no	Vented - Straight Vane	Hat Shape
72003	17.1	1.77	5.64	9.823	7.64	10	5/8"-18 UNF	bolt-on	Vented - Straight Vane	U-Shape
R6225M	16.93	1.76	5.90	9.823	8.659	10	5/8"-11 UNC	cast-in	Vented - Straight Vane	U-Shape

Flange Nuts



Part No.	Thread Size	A Hex Size	B Height
PRT-00110	M24 x 1.5	1.42	1.34
PRT-00115	M22 x 1.5	1.30	1.22
PRT-00116	M18 x 1.5	1.06	0.98

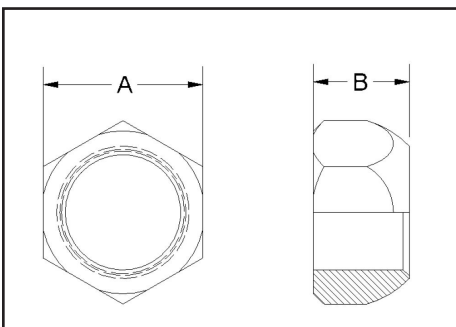
Inner Cap Nuts



Part No.	Inner Thread	Outer Thread	A Square	B Length	C Inner Thread Depth	Notes
PRT-05549L*	3/4 - 16	1-1/8 - 16	0.81	2.24	1.25	Standard for Dual Steel Wheels
PRT-05549R*	3/4 - 16	1-1/8 - 16	0.81	2.24	1.25	

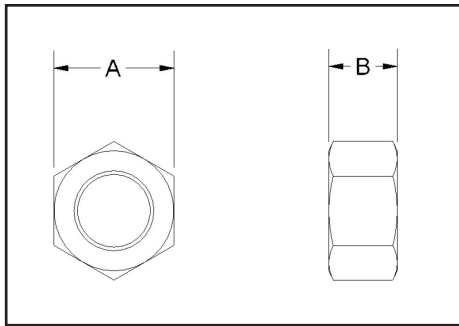
* Availability limited to existing stock

Outer Cap Nuts



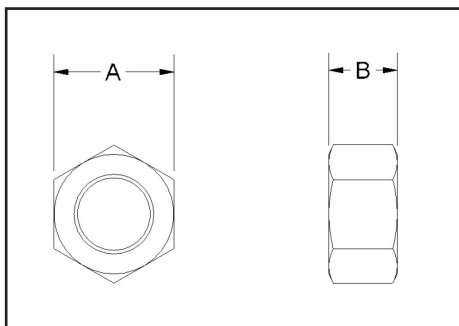
Part No.	Thread Size	A Hex Size	B Height	Notes
PRT-05652L	3/4 - 16	1.5	0.88	For Single Steel Wheels
PRT-05652R	3/4 - 16	1.5	0.88	
PRT-05552L	1-1/8 - 16	1.5	0.88	For Dual Wheels
PRT-05552R	1-1/8 - 16	1.5	0.88	

Rim Nuts



Part No.	Thread Size	A Hex Size	B Height
PRT-00075	3/4 - 10	1.22	0.73

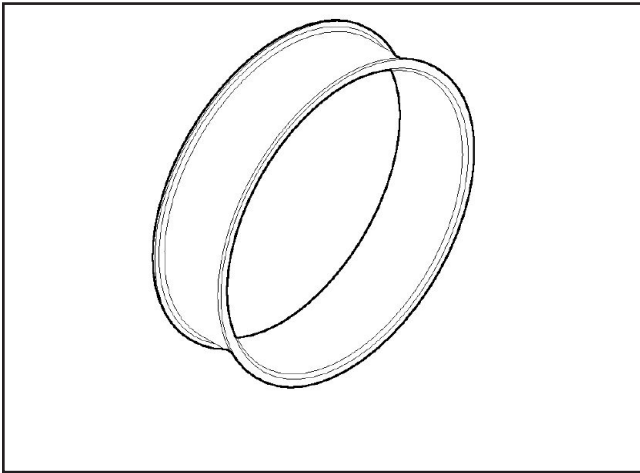
Lock Nuts



Part No.	Thread Size	A Hex Size	B Height
PRT-00152	3/4 - 16 RH	1.12	0.71
PRT-00153*	3/4 - 16 LH	1.12	0.71

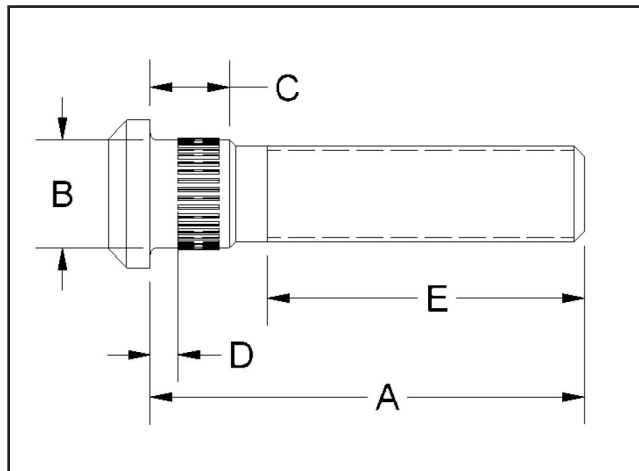
* Obsolete

Rim Spacer Bands



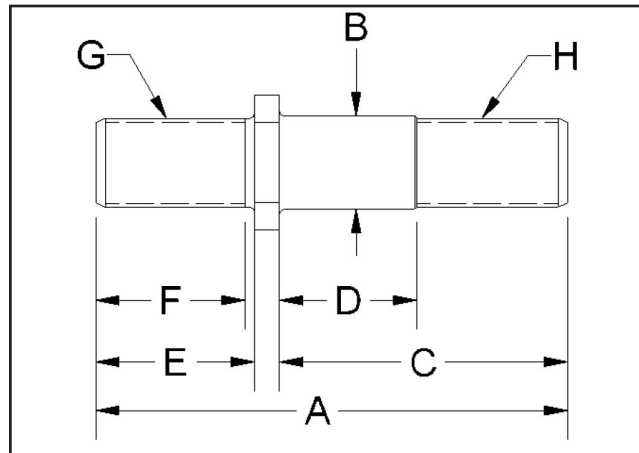
Part No.	Size
PRT-04020	20 x 4"

Serrated Studs



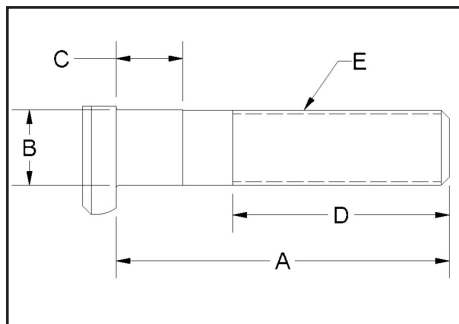
Part No.	A	B	C	D	E	Thread
PRT-00117	3.97	0.98	0.72	0.22	3.04	M22 x 1.5
PRT-00118	4.82	0.98	0.72	0.22	3.89	M22 x 1.5
PRT-00121	3.73	0.98	0.72	0.22	2.80	M22 x 1.5
PRT-00122	4.25	0.78	0.72	0.22	3.32	M22 x 1.5
PRT-01292	2.72	0.98	0.72	0.22	1.50	3/4-16 RH
PRT-01293	2.72	0.98	0.72	0.22	1.50	3/4-16 LH
PRT-01294	3.13	0.98	0.81	0.25	1.63	3/4-16 RH
PRT-01295	3.13	0.98	0.72	0.22	1.63	3/4-16 LH
PRT-04565	5.47	0.98	1.27	0.24	3.94	M24 x 1.5
PRT-00131	3.43	0.77	0.72	0.22	2.56	M18 x 1.5

Shoulder Studs



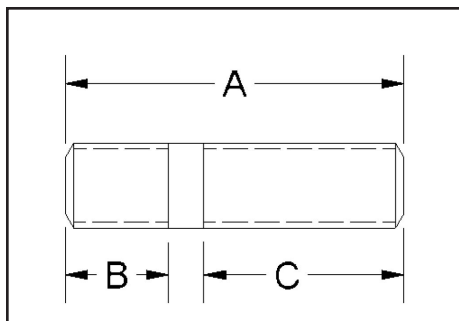
Part No.	A	B	C	D	E	F	G	H
PRT-00874	4.00	0.78	2.47	1.06	1.34	1.08	3/4-16 RH	3/4-16 RH
PRT-00875	4.00	0.78	2.47	1.06	1.34	1.08	3/4-16 LH	3/4-16 RH

Clipped Head Studs



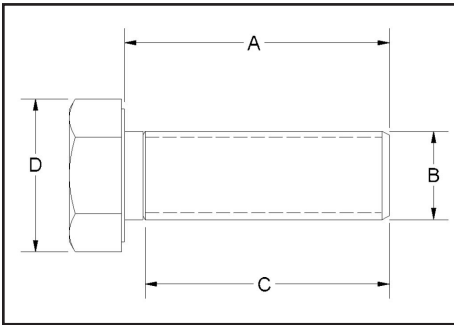
Part No.	A	B	C	D	E Thread
PRT-01296	3.15	0.71	0.63	2.05	M18 x 1.5

Rim Studs



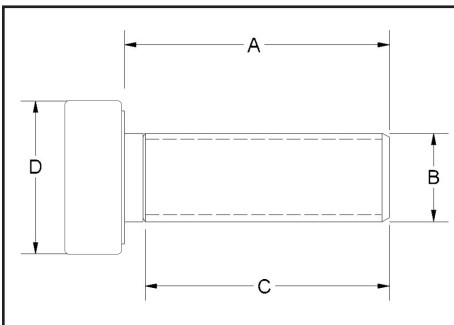
Part No.	A	Wheel End	Nut End	Thread
		B	C	
PRT-00114	3.00	0.88	1.73	3/4-10

Hex Head Cap Screws



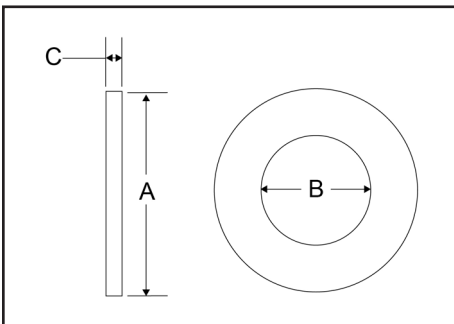
Part No.	A	B Thread	C	D Across Flats
PRT-00151	1.95	3/4-16	1.75	1.10
PRT-07240	1.57	M16 x 2	1.47	0.94
PRT-07245	1.77	M16 x 2	1.67	0.94

Socket Head Cap Screws



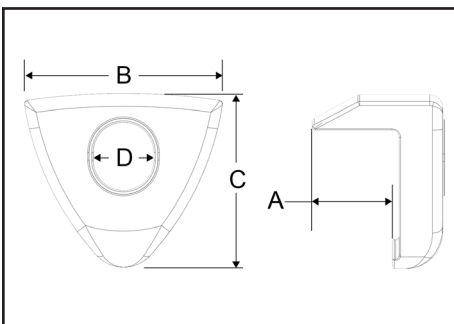
Part No.	A	B Thread	C	D Diameter
PRT-01636	2.36	M14 x 2	1.77	0.47
PRT-01640	1.57	M16 x 2	1.47	0.55
PRT-01635	1.38	M16 x 2	1.28	0.55

Washers



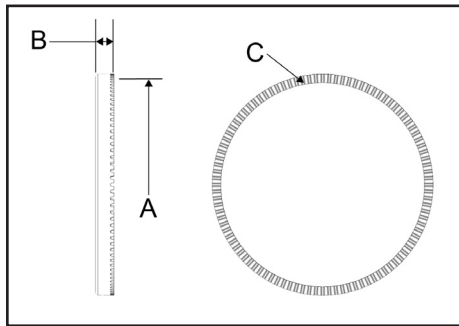
Part No.	A	B	C
PRT-07246	1.25	0.66	0.1

Rim Clamps



Part No.	A	B	C	D Stud Dia.
PRT-00123	1.02	2.88	2.40	0.82

ABS Tone Rings



Part No.	A Pitch Dia.	B Height	C No. of Teeth	D Inside Dia.	Material
PRT-03237	6.77	0.59	100	6.49	Steel
PRT-10925	6.46	0.35	100	5.51	Powdered Metal
PRT-10935	6.93	0.51	100	6.49	
PRT-10981	6.77	0.47	80	6.39	
PRT-10982	6.25	0.53	100	5.51	
PRT-13237	6.77	0.59	100	6.49	
PRT-13301	7.28	0.59	100	6.92	

Your only single source for industry-leading wheel end solutions.

STEEL & ALUMINUM WHEELS | DRUMS | HUBS | ROTORS | SLACK ADJUSTERS

For more information or to place an order: **(800) 626-7096** | accuridecorp.com

Accuride | 38777 Six Mile Road, Suite 410 | Livonia, MI 48152 USA

