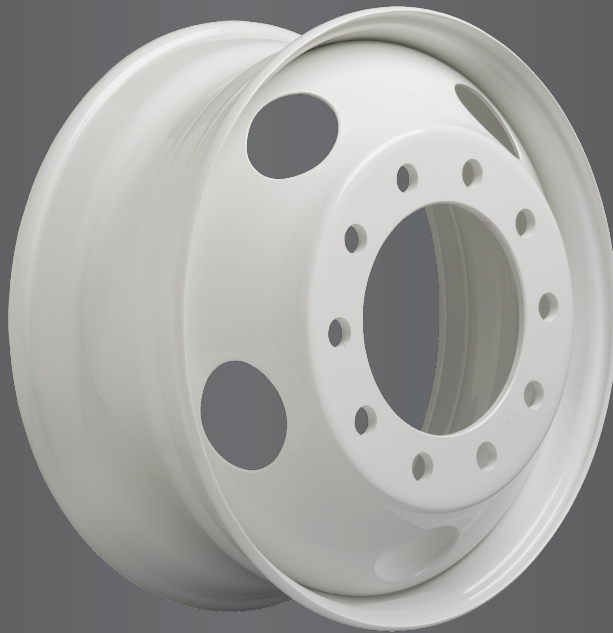




## Accuride/Maxion Cross Reference



Your only single source for industry-leading wheel end solutions.

STEEL & ALUMINUM WHEELS | DRUMS | HUBS | ROTORS | SLACK ADJUSTERS



The below wheels that are listed as interchangeable have the same rim size, mounting, and comparable offset. Rim type, weight, disc thickness, load and inflation capacity, number and design of hand holes, and the brake clearance package may be different. Always compare all wheel specifications between the two products before making a changeover.

CROSS REFERENCE						
Maxion P/N	Accuride P/N	Size	Mount	Offset	Hand Holes	
10013	28656	17.5 x 6.75	Hub-Piloted	8 - 275mm BC - 221mm Bore	5.60"	4
10033	29816	22.5 x 12.25	Stud-Piloted	10 - 11¼" BC - 8.72" Bore	4.75" Inset	2
10034	29806	22.5 x 12.25	Hub-Piloted	10 - 285.75mm BC - 220mm Bore	4.00" Inset	5
10035	29807	22.5 x 12.25	Hub-Piloted	10 - 285.75mm BC - 220mm Bore	4.75" Inset	5
10038	29001	22.5 x 7.50	Hub-Piloted	10 - 285.75mm BC - 220mm Bore	6.44"	5
10039	29146	22.5 x 13.00	Hub-Piloted	10 - 285.75mm BC - 220mm Bore	0.63"	5
10041	29039	22.5 x 9.00	Hub-Piloted	10 - 285.75mm BC - 220mm Bore HD	5.25"	5
10042	29818	22.5 x 13.00	Stud-Piloted	10 - 11¼" BC - 8.72" Bore	0.63"	2
10043	29174	22.5 x 13.00	Hub-Piloted	10 - 285.75mm BC - 220mm Bore	2.62" Inset	5
10044	28465	22.5 x 13.00	Stud-Piloted	10 - 13 3/16" BC - 10.69" Bore	6.12" Inset	0
10047	29300	22.5 x 9.00	Hub-Piloted	10 - 285.75mm BC - 220mm Bore HD	7.00"	5
10048	28510	22.5 x 9.00	Stud-Piloted	10 - 11¼" BC - 8.72" Bore HD	7.00"	2
10049	29169	22.5 x 8.25	Hub-Piloted	10 - 285.75mm BC - 220mm Bore HD	6.62"	5
10056	29057	22.5 x 13.00	Hub-Piloted	10 - 285.75mm BC - 220mm Bore	5.25" Inset	5
10059	29303	22.5 x 13.00	Hub-Piloted	10 - 285.75mm BC - 220mm Bore	4.32" Inset	5
10060	28684	22.5 x 13.00	Stud-Piloted	10 - 11¼" BC - 8.72" Bore	5.25" Inset	0
10073	51637	22.5 x 8.25	Hub-Piloted	10 - 285.75mm BC - 220mm Bore	6.60"	10
10076	29545	24.5 x 8.25	Hub-Piloted	10 - 285.75mm BC - 220mm Bore	6.62"	10
10086	50172	22.5 x 14.00	Hub-Piloted	10 - 285.75mm BC - 220mm Bore	0.00"	5
10097	29627	22.5 x 14.00	Hub-Piloted	10 - 285.75mm BC - 220mm Bore	2.00"	5
87893	27403	22.5 x 7.50	Stud-Piloted	10 - 11¼" BC - 8.72" Bore	6.44"	2
87897	27406	24.5 x 8.25	Stud-Piloted	10 - 11¼" BC - 8.72" Bore	6.62"	2
87904	27833C	22.5 x 8.25	Stud-Piloted	10 - 11¼" BC - 8.72" Bore	6.62"	5
87905	27404	22.5 x 8.25	Stud-Piloted	10 - 11¼" BC - 8.72" Bore	6.62"	2
87934	27834C	22.5 x 8.25	Hub-Piloted	Special Bus 10 - 11¼" BC - 8.66" Bore	6.62"	5
89921	28549	22.5 x 8.25	Stud-Piloted	10 - 11¼" BC - 8.72" Bore HD	6.62"	2
89922	28410	24.5 x 8.25	Stud-Piloted	10 - 11¼" BC - 8.72" Bore HD	6.62"	2
90260	28828	22.5 x 8.25	Hub-Piloted	10 - 285.75mm BC - 220mm Bore HD	6.62"	2
90261	28827	24.5 x 8.25	Hub-Piloted	10 - 285.75mm BC - 220mm Bore HD	6.62"	2
90262	51487	22.5 x 8.25	Hub-Piloted	10 - 285.75mm BC - 220mm Bore	6.60"	5
90263	50641	24.5 x 8.25	Hub-Piloted	10 - 285.75mm BC - 220mm Bore	6.62"	5
90541	51408	22.5 x 8.25	Hub-Piloted	10 - 285.75mm BC - 220mm Bore	6.60"	2
90542	50409	24.5 x 8.25	Hub-Piloted	10 - 285.75mm BC - 220mm Bore	6.62"	2
91831	50180	19.5 x 6.75	Hub-Piloted	8 - 275mm BC - 221mm Bore	5.60"	4
91834	28112	17.5 x 6.75	Stud-Piloted	10 - 8¾" BC - 6.50" Bore	6.19"	2
91840	29195	19.5 x 7.50	Hub-Piloted	10 - 285.75mm BC - 220mm Bore	6.40"	5
2920072	28440	22.5 x 8.25	Hub-Piloted	10 - 335mm BC - 281mm Bore	6.62"	10

Your only single source for industry-leading wheel end solutions.

STEEL & ALUMINUM WHEELS | DRUMS | HUBS | ROTORS | SLACK ADJUSTERS

For more information: (800) 823-8332 | [accuridecorp.com](http://accuridecorp.com)

Accuride | 38777 Six Mile Road, Suite 410 | Livonia, MI 48152 USA

W1.056 Rev. 1 1122 ©2022 Accuride Corporation

