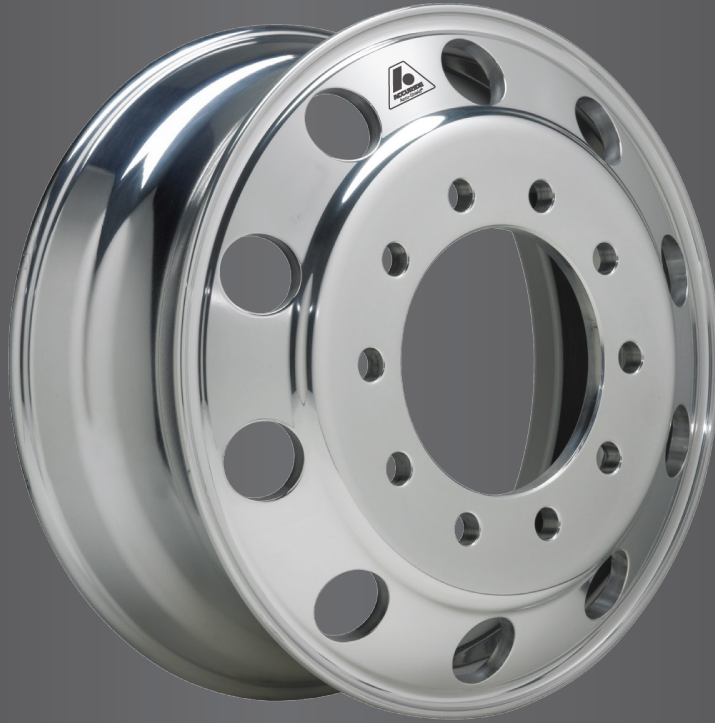




Accu-Shield® Aluminum Wheels



Protective Coating for Aluminum Wheels

Your only single source for industry-leading wheel end solutions.

STEEL & ALUMINUM WHEELS | DRUMS | HUBS | ROTORS | SLACK ADJUSTERS



Appearance and Maintenance

- Accu-Shield® wheels have a noticeable bright, clear appearance.
- Accu-Shield® wheels are easy to clean - just use mild soap and water.
- Accu-Shield® wheels have a decal on both sides of the wheel identifying them.
- Save time and money with Accu-Shield® wheels, aluminum polishes are unnecessary.
- Accu-Shield® wheels should not be cleaned with harsh abrasives. Wheels should be cleaned with mild soap and water only. Refer to Accuride Technical Bulletin W2.025 for further details on cleaning and maintenance.
- To protect the finish of Accu-Shield® wheels, Accuride highly recommends the use of Wheel-Guard® separator plates.

Multiple finish options

Accuride offers a standard polish finish for all aluminum wheels and premium polish and surface treatment options when only the best will do.

Finish Options	Code
Extra Polish with Accu-Shield® Easy to maintain, protected finish	XPC
Extra Polish Premium polish on both sides	XP
Standard Polish Best value with a great look	SP



Accu-Shield® Wheel Limited Warranty

Accu-Shield® wheels are warranted for 60 months from the date of manufacture. This Limited Warranty applies to Accu-Shield® wheels and does not cover corrosion, misuse or other damage associated with the conditions addressed in Accuride's Limited Warranty or associated with (i) any damage in the areas of the mounting surfaces (such as the area under the mounting nuts, hubs, drums and against other wheels in dual position), (ii) any damage due to cleaning including use of abrasives, abrasive brushes, steel wool, scouring pads or strong chemicals, and (iii) any damage of the Accu-Shield® wheel finish, due to removal, misuse, or chipping, whether by contact with road obstacles such as stones, gravel, curbs, barriers, signs, or otherwise. Accuride recommends cleaning the wheels with mild soap and water. Refer to Accuride Technical Bulletin W2.025 for recommended cleaning practices.

Attn: To avoid accidents, OSHA regulations require employers to train their personnel who service multi-piece and single-piece wheels/rims. Contact your local OSHA office or Accuride Corporation for safety information and charts. For free safety manuals, charts and videos, write to Accuride Corporation, 7140 Office Circle, Evansville, IN 47715. Or visit our website at <http://www.accuridecorp.com>.

Your only single source for industry-leading wheel end solutions.

STEEL & ALUMINUM WHEELS | DRUMS | HUBS | ROTORS | SLACK ADJUSTERS

For more information: **(800) 823-8332** | [accuridecorp.com](http://www.accuridecorp.com)

Accuride Wheels | 7140 Office Circle | Evansville, IN 47715 USA



ACCURIDE™