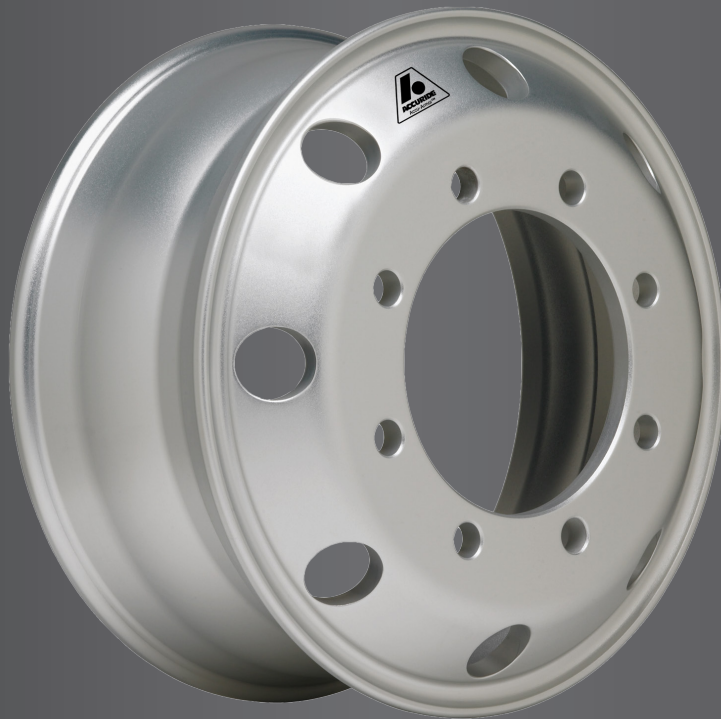




Accu-Armor™ Wheel Surface Treatment



A unique way to protect your investment

Your only single source for industry-leading wheel end solutions.

STEEL & ALUMINUM WHEELS | DRUMS | HUBS | ROTORS | SLACK ADJUSTERS



Stand out with Accu-Armor™ Wheel Surface Treatment!

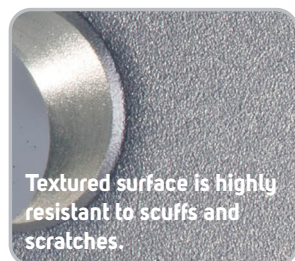
Accuride Wheel's distinctive Accu-Armor™ premium aluminum wheel treatment is ideal for applications that demand low-maintenance and corrosion-resistant performance. Accu-Armor™ wheels are highly resistant to the kinds of scuffs and scratches that occur during normal wear and should never corrode. This makes them ideal for use in vocational settings where weight sensitivity and low maintenance are key. In addition, the distinctive look has real appeal for those who want a rig that stands out from the crowd.

FEATURES

Characteristics	Benefits
Unique surface treatment penetrates the metal, making the wheel surface highly resistant to abrasion.	Superior wear, easy to clean, scuff and scratch resistance, jewel-like shine on surface.
Textured and anodized.	Eliminates opportunity for filiform corrosion.
Highly resistant to low- and high-pH chemicals commonly used in truck washes.	Maintains its unique surface appearance.
Unique surface treatment enhances the wheel's ability to combat harsh chemicals.	Resistant to common chemicals used in de-icing road surfaces.
Dependable, durable performance under extended exposure to heat and UV light.	Will NOT chalk or fade during exposure to the environment.

AVAILABILITY

Part Number	Size	Type
42644R	22.5 x 8.25	Accu-Lite® Aluminum Wheels
42362R	24.5 x 8.25	Accu-Lite® Aluminum Wheels
43140R	22.5 x 14.00 - 0.5"	Accu-Lite® Aluminum Wheels
43142R	22.5 x 14.00 - 2"	Accu-Lite® Aluminum Wheels
41730R	22.5 x 9.00	Heavy Load Application Wheels



Textured surface is highly resistant to scuffs and scratches.

This superior surface treatment option is priced comparably to other aluminum wheel treatments on the market.

Ideal Applications

Vocational Fleets⁽¹⁾:

- Cement Mixers
- Gravel Haulers
- Dump Trucks
- Refuse/Recycling Trucks

Transit Buses

Tanker Fleets

Fire Trucks

Owner Operators

⁽¹⁾ For Aluminum Heavy Load applications please see bulletins W2.026, W2.027, and W2.028

- Accu-Armor™ wheel part numbers are identified with an "R" suffix.
- Accu-Armor™ wheels are covered by Accuride's five-year wheel and rim limited warranty. See W1.000 for full details.
- Contact your Accuride Sales Representative for part numbers specific to your application.

Your only single source for industry-leading wheel end solutions.

STEEL & ALUMINUM WHEELS | DRUMS | HUBS | ROTORS | SLACK ADJUSTERS

For more information: **(800) 823-8332** | accuridecorp.com
Accuride | 7140 Office Circle | Evansville, IN 47715 USA

