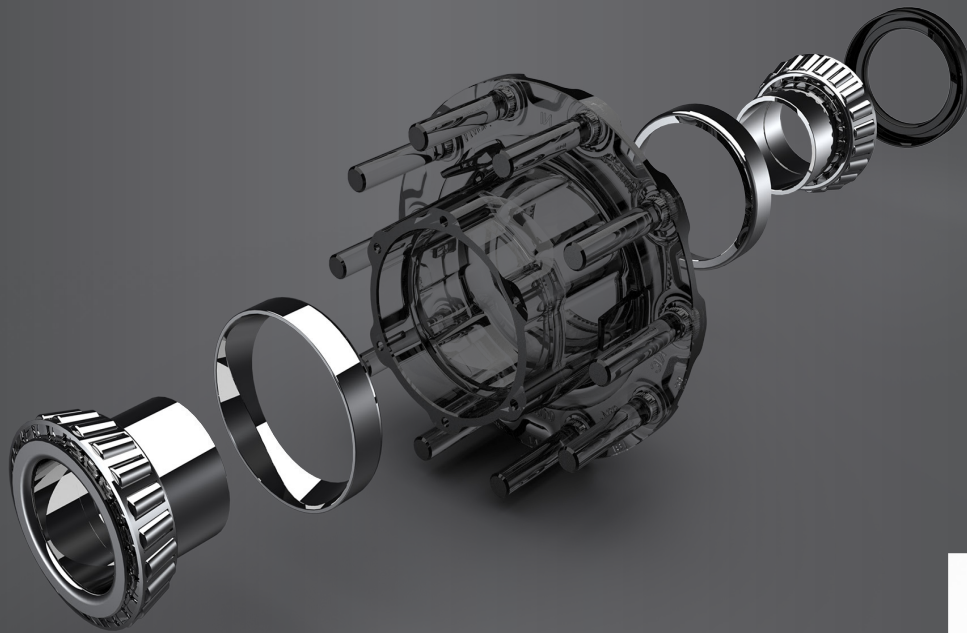




## ROLLiant™ Wheel End System



Simplified Wheel End Installation | Industry-Leading Warranty



## The Next Generation in Wheel Ends

Wheel bearing adjustment is a critical factor in the life and safety of your fleet. A deviation in adjustment, the width of a single human hair, can mean the difference between a safe and reliable hub system and premature failure. Traditional hubs run the risk of being improperly installed, leading to premature tire wear or even seal or bearing failure.

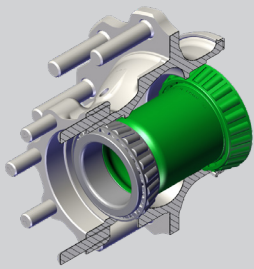
KIC's ROLLiant™ bearing system utilizes a patent-pending extended bearing cone to improve on existing bearing systems. By incorporating this extension into the bearings, component quantity and problematic interfaces are reduced, ensuring proper endplay is maintained.

KIC assembles each ROLLiant™ wheel end with 100% endplay inspection and serialization for complete traceability and optimal bearing life. ROLLiant™ is available for the four major trailer & truck spindle types.



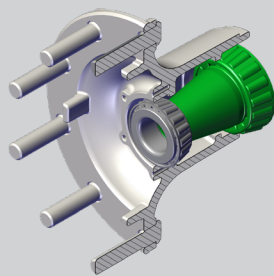
Features	Benefits
Easy lubrication via the fill port in the precision machined hub	Faster inspection, reduced maintenance, and increased vehicle uptime
10 year trailer, 7 year truck wheel end system warranty	All warranty claims come to Accuride so you aren't stuck tracking down suppliers as with competing designs
Patent-pending extended bearing cones installed with optimal endplay	Longer system life and no need for endplay measurement during axle assembly
Factory-installed long life seal	Improved seal performance in the field
Patent-pending packaging maintains hub cleanliness and assists with installation	Install four ROLLiants in the time to install one standard hub with the added assurance of quality and consistency

### Truck Applications



#### ROLLiant: R

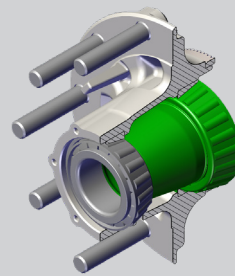
Drive hub system with extended inboard cone



#### ROLLiant: FF

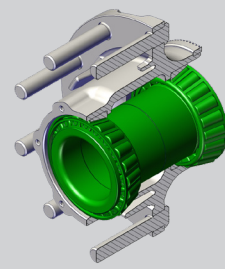
FF-spindle system with extended inboard cone

### Trailer Applications



#### ROLLiant: N

Tapered N-spindle system with extended inboard cone



#### ROLLiant: P

Parallel P-spindle system with two identical extended bearings



Scan this code for ROLLiant installation, service, lubrication, and warranty documentation.



Scan this code for the ROLLiant warranty registration page.

**Your only single source for industry-leading wheel end solutions.**

STEEL & ALUMINUM WHEELS | DRUMS | HUBS | ROTORS | SLACK ADJUSTERS

For more information: (800) 677-3786 | (815) 964-3301 | [accuridecorp.com](http://accuridecorp.com)

KIC | 3800 Fruit Valley Road | Vancouver, WA 98660

