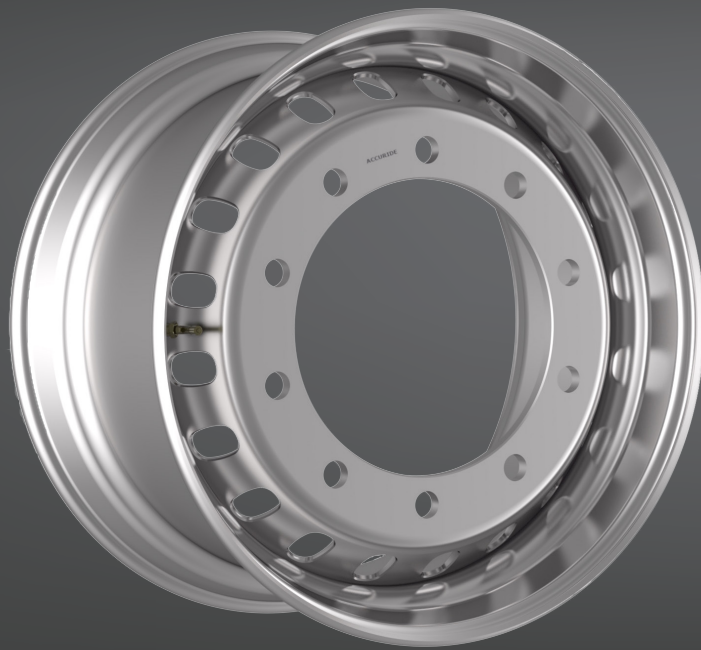




Introducing the Lightest Trailer Steel Wheels in Europe



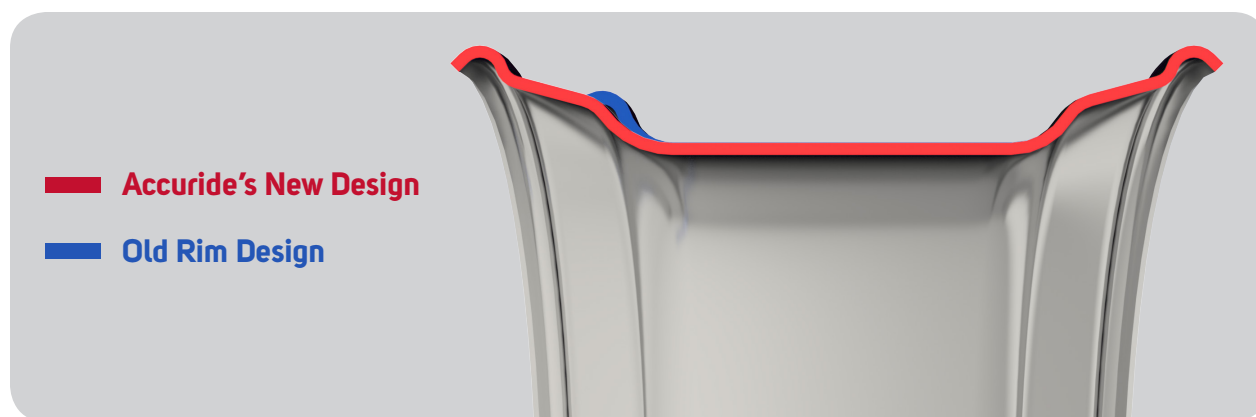
Up to four kilograms weight savings per wheel

## Accuride Launches Lightest Weight Trailer Steel Wheels in Europe

Continuing Accuride's worldwide leadership position in steel wheel weight reduction, we now introduce the lightest steel wheel portfolio in Europe for trailer applications. The three most popular wheels in the European market offer four kilograms in savings compared to their predecessors. This represents 32 kilograms of weight savings in a tractor-trailer combination. With the same great features of reduced weight, additional payload and increased ROI, these new offerings provide advanced steel wheel technology, unmatched in the industry.

### Advanced Engineering

The combination of Accuride's new rim contour, 100% HSLA material construction, and new wheel design delivers the lightest weight product portfolio in the industry. These wheels meet all the European test standards LBF-BIAX EUWA 3.23 and EUWA ES 3.11.



### Eligibility and Ordering

Wheels will be available in Q1 2020. Contact your Accuride representative for more information on this new, exciting product offering.

Wheel Size	New Part Number	Weight* (kg)	Shape of Stud Holes	Centering	Inset (mm)	Max Load (kg)	Obsolete P/N
22.5 x 11.75	KPB15146	38.5	M22	MZ	120	5000	KPB15083 KPB15133
22.5 x 11.75	KPB15152	35	M22	MZ	0	5000	SRB15084 SRB15134
22.5 x 11.75	KPB15153	35	M22	MZ	45	5000	SRB15122 SRB15137

### About Accuride Corporation

With headquarters in Evansville, Ind., USA, Accuride Corporation is a leading supplier of components to the North American and European commercial vehicle industries. The company's products include commercial vehicle wheels and wheel end components and assemblies. The company's products are marketed under its brand names, which include Accuride™, Accuride Wheel End Solutions™, Gunite®, KIC®. Accuride is a portfolio company of Crestview Partners. For more information: [www.accuridecorp.com](http://www.accuridecorp.com).

\*Nominal weight shown, actual weight may vary.

**Your only single source for industry-leading wheel end solutions.**

STEEL & ALUMINUM WHEELS | DRUMS | HUBS | ROTORS | SLACK ADJUSTERS

For more information: **+49 (0) 212 701 2212** | [www.accuridecorp.com](http://www.accuridecorp.com)

Accuride Wheels Solingen GmbH | Weyerstrasse 112-114 | 42697 Solingen Germany